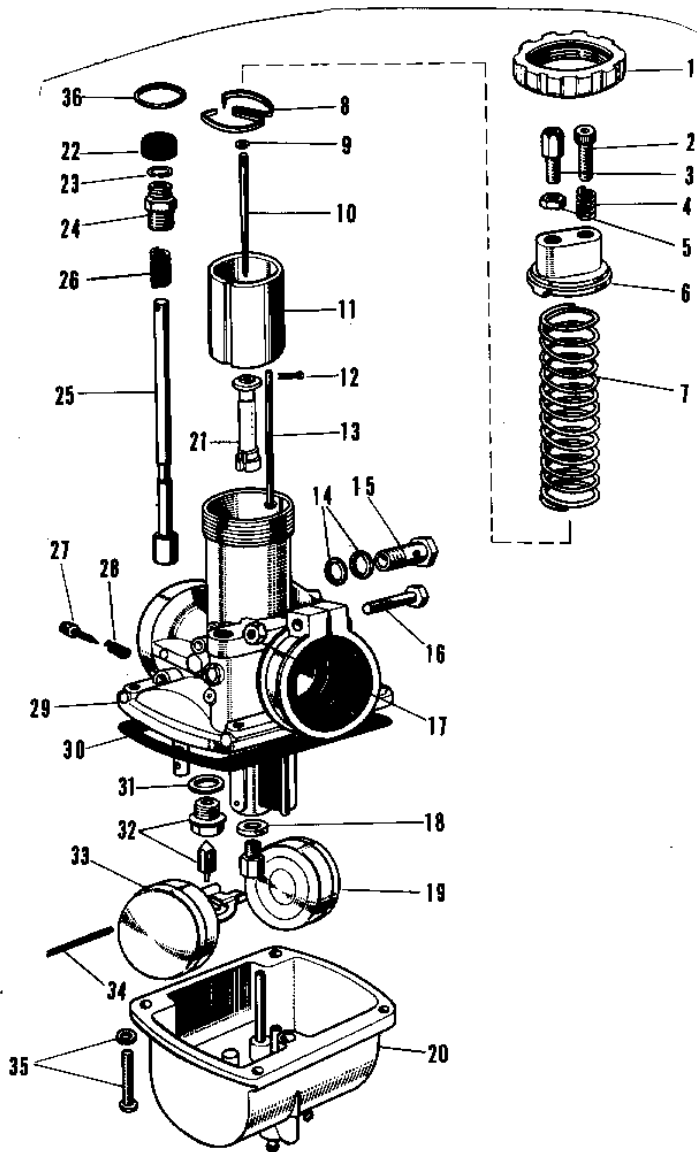


1971 Centurion PARTS DIAGRAM

CARBURETOR

r
1



1971 Centurion PARTS LIST

CARBURETOR

ITEM NAME	PART NUMBER	QUANTITY
CARBURETOR ASSY (Ref # 1~35)	16001-100	
CAP MIXING CHAMBER (Ref # 1)	16004-011	
SCREW, THROTTLE STOP (Ref # 2)	16021-002	
CABLE ADJUSTER (Ref # 3)	16002-002	
SPRING THR STOP SCREW (Ref # 4)	16022-005	
NUT CABLE ADJUST LOCK (Ref # 5)	16003-004	
TOP MIXING CHAMBER (Ref # 6)	16005-020	
SPRING THROTTLE VALVE (Ref # 7)	16006-014	
SPRING SEAT THRTL VLV (Ref # 8)	16007-012	
CIRCLIP (Ref # 9)	16008-010	
JET NEEDLE 4DG-6 (Ref # 10)	16009-029	
VALVE THROTTLE (Ref # 11)	16025-028	
UNAVAILABLE IN PRICE BOOK (Ref # 12)	16023-001	
ROD THROTTLE VLV STOP (Ref # 13)	16024-004	
GASKET 8MM (Ref # 14)	751P0800	
BOLT BANJO (Ref # 15)	92001-011	
SCREW CLAMP (Ref # 16)	16010-004	
NUT 6MM (Ref # 17)	311B0600	
WASHER MAIN JET (Ref # 18)	16034-001	
JET-MAIN NO 150A (Ref # 19)	92063-016	
JET-MAIN NO 140A (Ref # 19)	92063-015	
JET-MAIN NO 160A (Ref # 19)	92063-017	
JET-MAIN NO 170A (Ref # 19)	92063-019	
NEEDLE JET 0-6 (Ref # 21)	16017-036	
CAP RUBBER (Ref # 22)	16036-006	
CIRCLIP (Ref # 23)	92037-1077	
CAP STARTER PLUNGER (Ref # 24)	16012-010	
PLUNGER STARTER (Ref # 25)	16016-008	
SPRING STARTER PLUNG (Ref # 26)	16013-006	

1971 Centurion PARTS LIST

CARBURETOR

ITEM NAME	PART NUMBER	QUANTITY
SCREW PILOT AIR ADJST (Ref # 27)	16014-002	
SPRING-THR STOP SCREW (Ref # 28)	16022-007	
GASKET FLOAT CHAMBER (Ref # 30)	16019-013	
WASHER FLOAT VLV SEAT (Ref # 31)	16029-004	
FLOAT VALVE ASSY (Ref # 32)	16030-005	
FLOAT (Ref # 33)	16031-016	
FLOAT PIN (Ref # 34)	16032-003	
SCREW FLOAT CHAMBER (Ref # 35)	16033-009	
SPRING (Ref # 36)	92081-065	