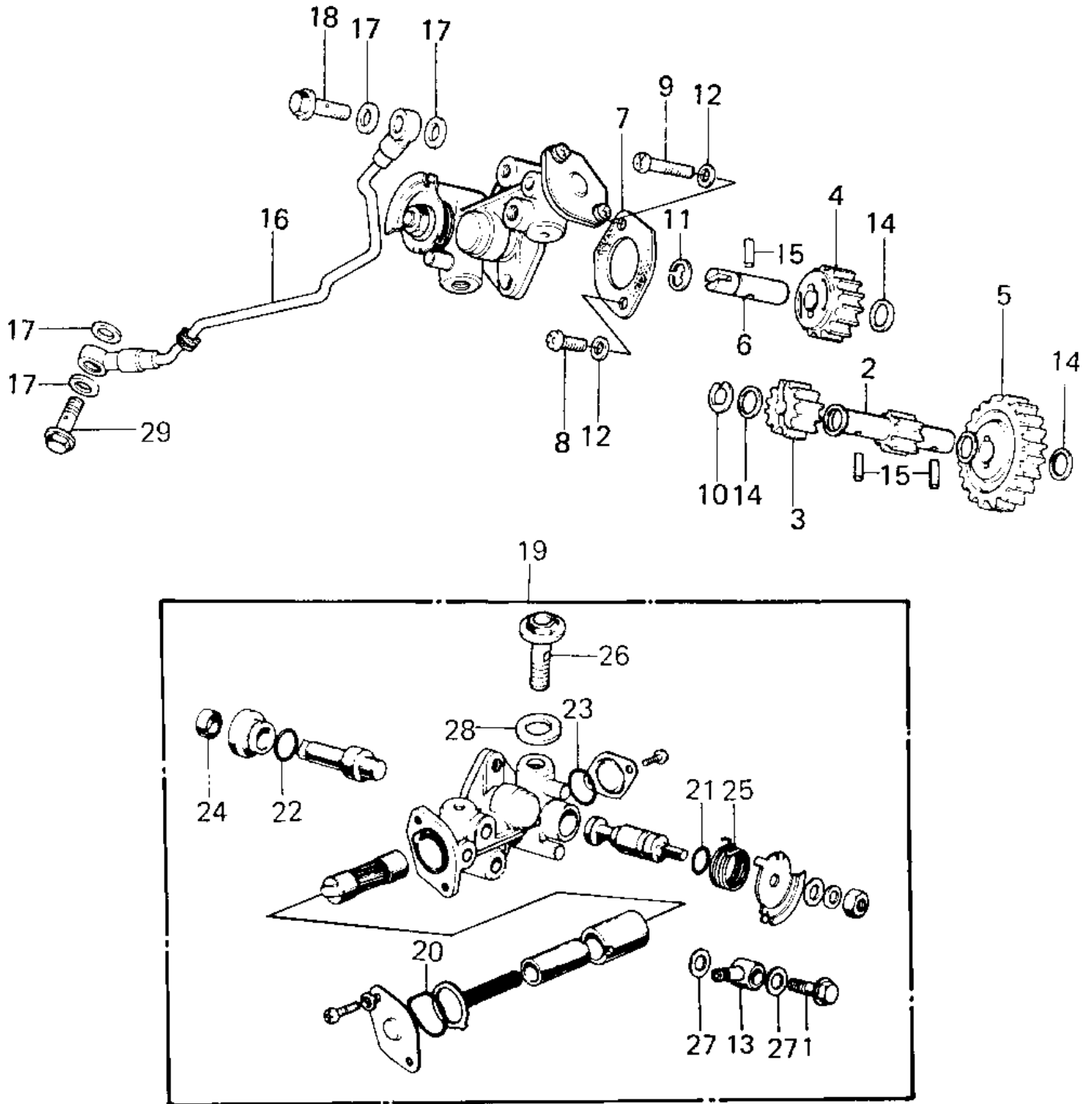


1980 KE125 PARTS DIAGRAM

OIL PUMP ('80-'81 A7/A8)



1980 KE125 PARTS LIST

OIL PUMP ('80-'81 A7/A8)

| ITEM NAME | PART NUMBER | QUANTITY |
|----------------------------------|-------------|----------|
| BOLT-BANJO,6MM (Ref # 1) | 92060-013 | 1 |
| PINION,TACHOMETER (Ref # 2) | 13224-010 | 1 |
| GEAR,OIL PUMP (Ref # 3) | 16085-020 | 1 |
| GEAR,OIL PUMP (Ref # 4) | 16085-021 | 1 |
| GEAR,OIL PUMP (Ref # 5) | 16085-022 | 1 |
| SHAFT,OIL PUMP GEAR (Ref # 6) | 16086-003 | 1 |
| GASKET,OIL PUMP (Ref # 7) | 11060-1160 | 1 |
| SCREW-PAN-CROS (Ref # 8) | 220B0514 | 1 |
| SCREW PAN CROSS,5X28 (Ref # 9) | 220B0528 | 1 |
| CIRCLIP 7MM (Ref # 10) | 482J7000 | 1 |
| CIRCLIP 7MM (Ref # 11) | 482J7000 | 1 |
| WASHER OIL PUMP (Ref # 12) | 92022-037 | 2 |
| CONNECTOR BANJO (Ref # 13) | 92061-009 | 1 |
| WASHER,THRUST (Ref # 14) | 92026-095 | 5 |
| PIN,DOWEL (Ref # 15) | 92042-035 | 3 |
| PIPE,OIL (Ref # 16) | 16134-022 | 1 |
| WASHER OIL PUMP BANJO (Ref # 17) | 92022-077 | 4 |
| BOLT-BANJO,6MM (Ref # 18) | 92060-013 | 1 |
| OIL PUMP ASSY (Ref # 19) | 16082-1014 | 1 |
| "0" RING,UPPER CAP (Ref # 20) | 16088-002 | 1 |
| SEAL-OIL,CAMSHAFT,"X" (Ref # 21) | 92049-1294 | 1 |
| "0" RING,OIL PUMP SHT (Ref # 22) | 16090-002 | 1 |
| "0" RING,LOWER CAP (Ref # 23) | 16090-004 | 1 |
| OIL SEAL OIL PUMP SHT (Ref # 24) | 16091-001 | 1 |
| SPRING,OIL PUMP LEVER (Ref # 25) | 16093-007 | 1 |
| BOLT,AIR VENT (Ref # 26) | 92009-1010 | 1 |
| WASHER OIL PUMP BANJO (Ref # 27) | 92022-077 | 2 |
| WASHER (Ref # 28) | 92022-1006 | 1 |
| BOLT BANJO (Ref # 29) | 92060-008 | 1 |