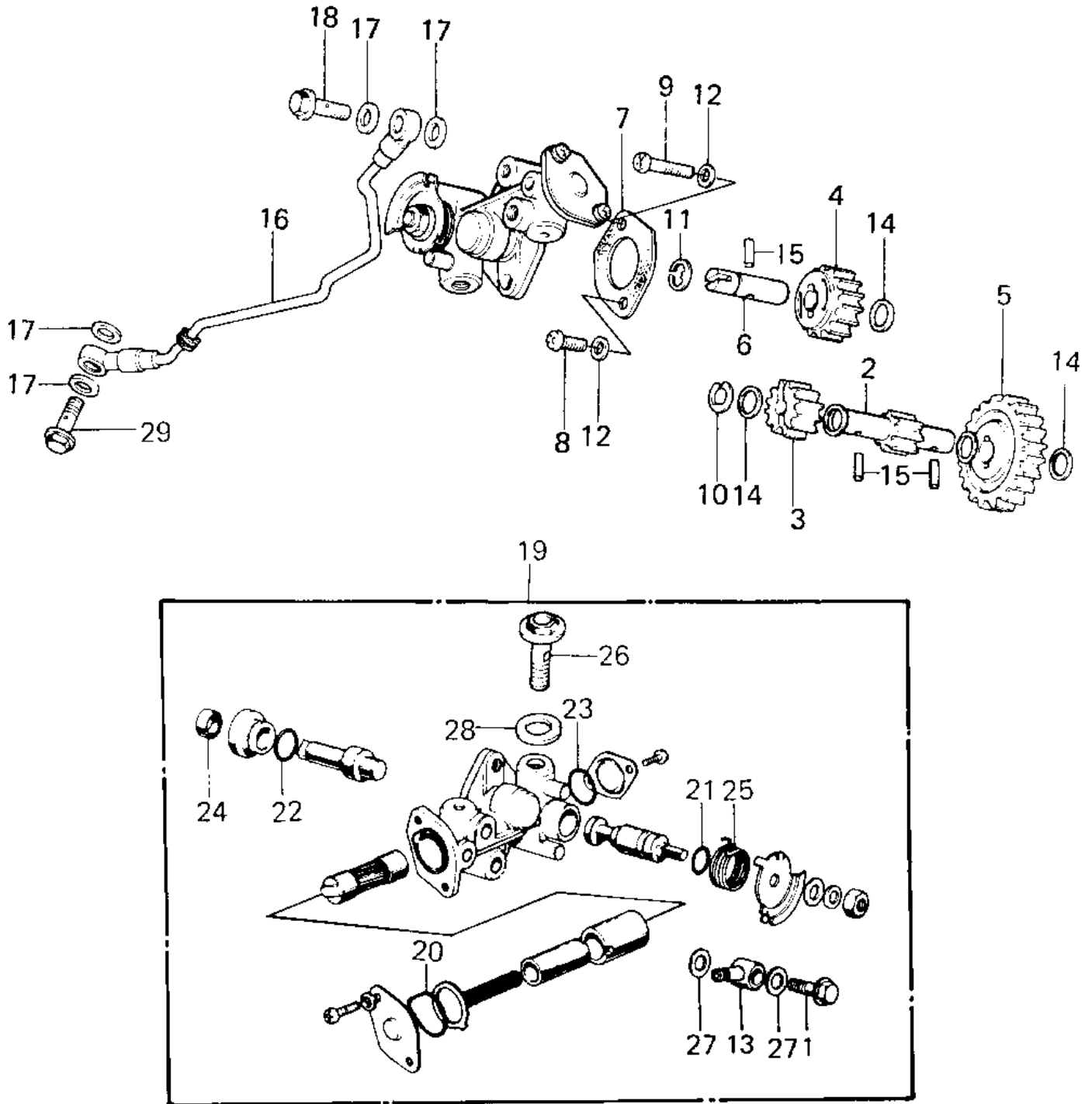


1981 KE125 PARTS DIAGRAM

OIL PUMP ('80-'81 A7/A8)



1981 KE125 PARTS LIST

OIL PUMP ('80-'81 A7/A8)

ITEM NAME	PART NUMBER	QUANTITY
BOLT-BANJO,6MM (Ref # 1)	92060-013	
PINION,TACHOMETER (Ref # 2)	13224-010	
GEAR,OIL PUMP (Ref # 3)	16085-020	
GEAR,OIL PUMP (Ref # 4)	16085-021	
GEAR,OIL PUMP (Ref # 5)	16085-022	
SHAFT,OIL PUMP GEAR (Ref # 6)	16086-003	
GASKET,OIL PUMP (Ref # 7)	11060-1160	
SCREW-PAN-CROS (Ref # 8)	220B0514	
SCREW PAN CROSS,5X28 (Ref # 9)	220B0528	
CIRCLIP 7MM (Ref # 10)	482J7000	
CIRCLIP 7MM (Ref # 11)	482J7000	
WASHER OIL PUMP (Ref # 12)	92022-037	
CONNECTOR BANJO (Ref # 13)	92061-009	
WASHER,THRUST (Ref # 14)	92026-095	
PIN,DOWEL (Ref # 15)	92042-035	
PIPE,OIL (Ref # 16)	16134-022	
WASHER OIL PUMP BANJO (Ref # 17)	92022-077	
BOLT-BANJO,6MM (Ref # 18)	92060-013	
OIL PUMP ASSY (Ref # 19)	16082-1014	
"0" RING,UPPER CAP (Ref # 20)	16088-002	
SEAL-OIL,CAMSHAFT,"X" (Ref # 21)	92049-1294	
"0" RING,OIL PUMP SHT (Ref # 22)	16090-002	
"0" RING,LOWER CAP (Ref # 23)	16090-004	
OIL SEAL OIL PUMP SHT (Ref # 24)	16091-001	
SPRING,OIL PUMP LEVER (Ref # 25)	16093-007	
BOLT,AIR VENT (Ref # 26)	92009-1010	
WASHER OIL PUMP BANJO (Ref # 27)	92022-077	
WASHER (Ref # 28)	92022-1006	
BOLT BANJO (Ref # 29)	92060-008	