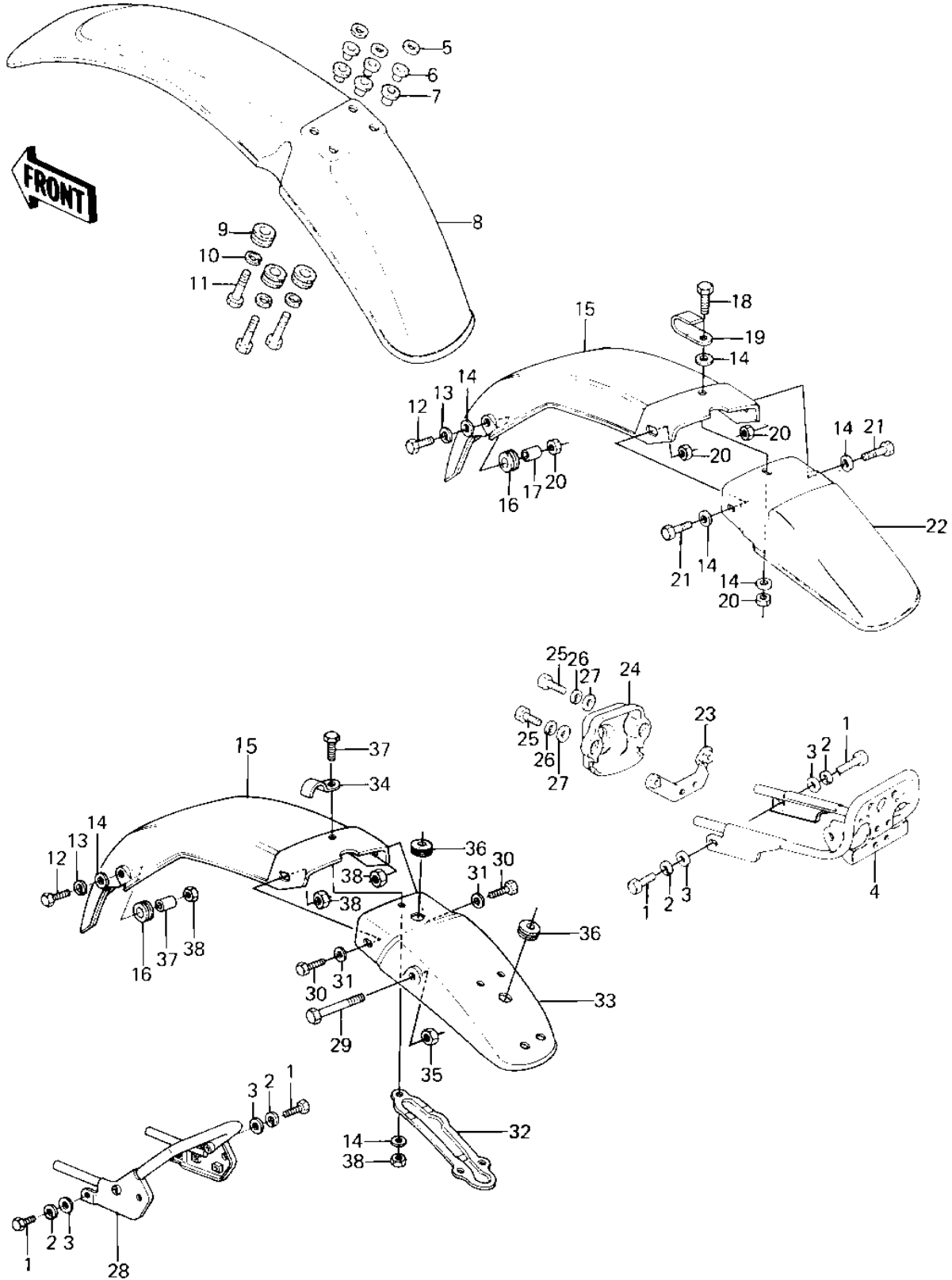


# 1980 KE125 PARTS DIAGRAM

FENDERS ('80-'81 A7/A8)



# 1980 KE125 PARTS LIST

## FENDERS ('80-'81 A7/A8)

ITEM NAME	PART NUMBER	QUANTITY
BOLT-SMALL-UPSET,8X16 (Ref # 1)	115G0816	2
WASHER SPRING 8MM (Ref # 2)	461F0800	2
WASHER PLAIN 8MM (Ref # 3)	410B0800	2
STAY,REAR (Ref # 4)	39137-1008	1
WASHER,PLAIN,7MM (Ref # 5)	92022-228	4
COLLAR (Ref # 6)	92027-194	4
DAMPER RUBBER (Ref # 7)	92075-103	4
FENDER-FR,F.RED (Ref # 8)	35004-1030-6L	1
DAMPER RUBBER,RR FEND (Ref # 9)	92075-121	4
WASHER SPRING 6MM (Ref # 10)	461F0600	4
BOLT-UPSET (Ref # 11)	112G0625	4
BOLT-UPSET,6X16 (Ref # 12)	112G0616	2
WASHER SPRING 6MM (Ref # 13)	461F0600	2
WASHER 6.5X20X1.6T (Ref # 14)	92022-125	6
WASHER 6.5X20X1.6T (Ref # 14)	92022-125	3
FENDER-RR (Ref # 15)	35022-100	1
DAMPER RUBBER (Ref # 16)	92075-105	2
COLLAR (Ref # 17)	92027-103	2
BOLT-UPSET,6X16 (Ref # 18)	112G0616	1
CLAMP,WIRING HARNESS (Ref # 19)	92037-1069	1
NUT (Ref # 20)	92019-008	5
BOLT-UPSET,6X20 (Ref # 21)	112G0620	2
FENDER-RR,F.RED (Ref # 22)	35022-1053-6L	1
BRACKET,TAIL LAMP (Ref # 23)	11034-1740	1
COVER,TAIL LAMP (Ref # 24)	14025-1169	1
BOLT-UPSET 6X14 (Ref # 25)	112B0614	2
WASHER SPRING 6MM (Ref # 26)	461F0600	2
WASHER 6.5X20X1.6T (Ref # 27)	92022-125	2
STAY-COMP,RR (Ref # 28)	39137-1011	1

# 1980 KE125 PARTS LIST

## FENDERS ('80-'81 A7/A8)

ITEM NAME	PART NUMBER	QUANTITY
BOLT-SMALL-UPSET (Ref # 29)	115G0845	2
BOLT-UPSET (Ref # 30)	112G0618	2
WASHER PLAIN 6MM (Ref # 31)	411B0600	2
GUSSET,REAR FENDER (Ref # 32)	35021-005	1
FENDER-RR,RED (Ref # 33)	35022-1083-B1	1
CLIP WIRING HARNESS (Ref # 34)	35024-002	2
NUT,LOCK,8MM (Ref # 35)	92015-1124	2
GROMMET,TL LMP WIRE (Ref # 36)	92071-079	2
BOLT-UPSET 6X14 (Ref # 37)	112B0614	1
NUT (Ref # 38)	92019-008	5