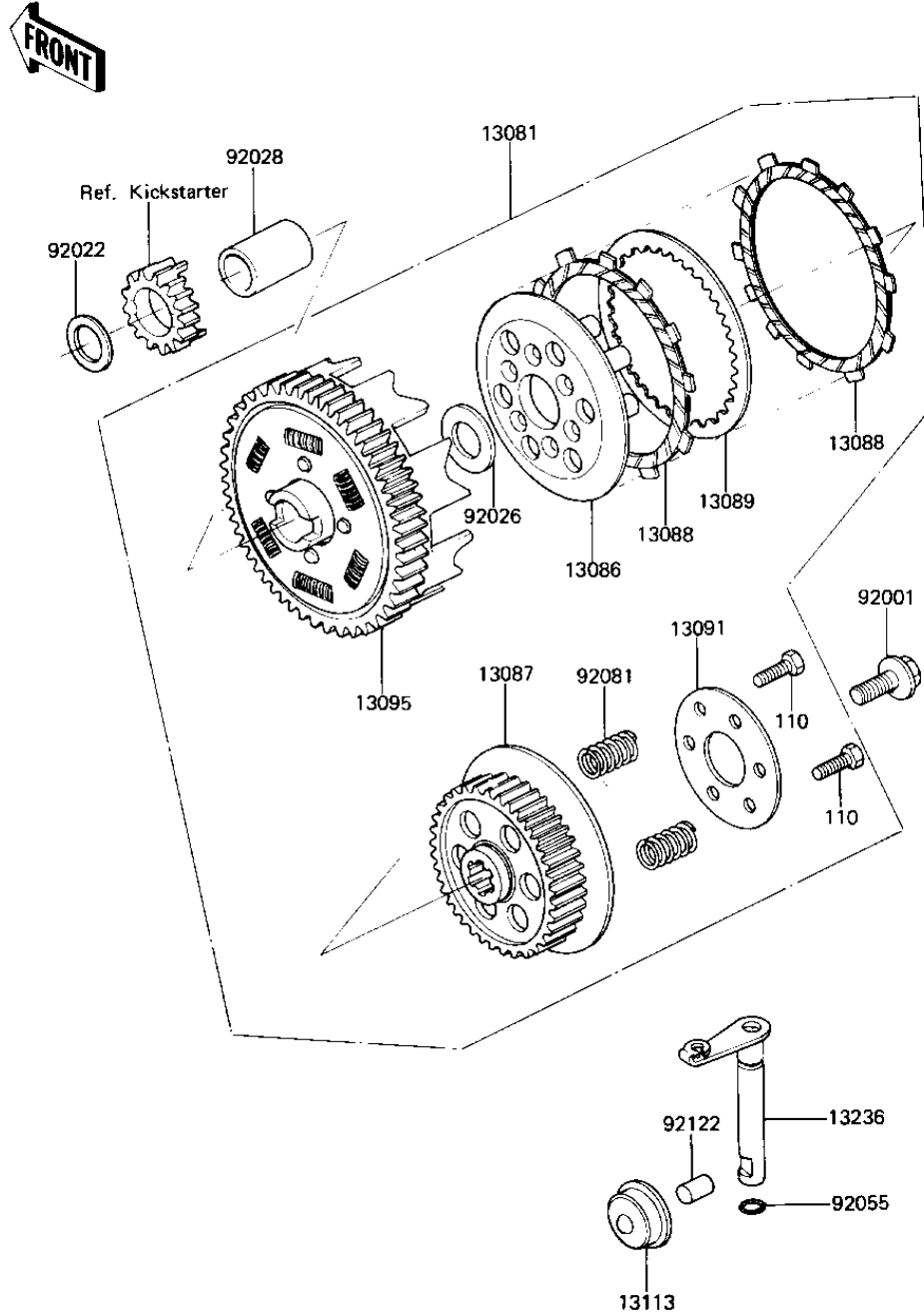


1982 AR80-A1 PARTS DIAGRAM

CLUTCH

E1350-0013



1982 AR80-A1 PARTS LIST

CLUTCH

| ITEM NAME | PART NUMBER | QUANTITY |
|-------------------------------------|-------------|----------|
| CLUTCH-ASSY (Ref # 13081) | 13081-5001 | 1 |
| WHEEL-CLUTCH (Ref # 13086) | 13086-1004 | 1 |
| HUB-CLUTCH (Ref # 13087) | 13087-1113 | 1 |
| PLATE-FRICTION (Ref # 13088) | 13088-1103 | 4 |
| PLATE-CLUTCH,STEEL (Ref # 13089) | 13089-1009 | 3 |
| HOLDER,CLUTCH SPRING (Ref # 13091) | 13091-1115 | 1 |
| HOUSING-COMP-CLUTCH (Ref # 13095) | 13095-5001 | 1 |
| PUSHER CLUTCH SPRING (Ref # 13113) | 13113-003 | 1 |
| LEVER-COMP,CLUTCH REL (Ref # 13236) | 13236-1044 | 1 |
| BOLT,8X18 (Ref # 92001) | 92001-1359 | 1 |
| WASHER,17.3X28X1.0 (Ref # 92022) | 92022-255 | 1 |
| SPACER,CLUTCH (Ref # 92026) | 92026-1096 | 1 |
| BUSHING,17X22X34.5 (Ref # 92028) | 92028-1117 | 1 |
| "O" RING (Ref # 92055) | 92055-1023 | 1 |
| SPRING,CLUTCH (Ref # 92081) | 92081-1485 | 6 |
| ROLLER,10X12 (Ref # 92122) | 92122-1019 | 1 |
| BOLT-UPSET (Ref # 110) | 112G0516 | 6 |