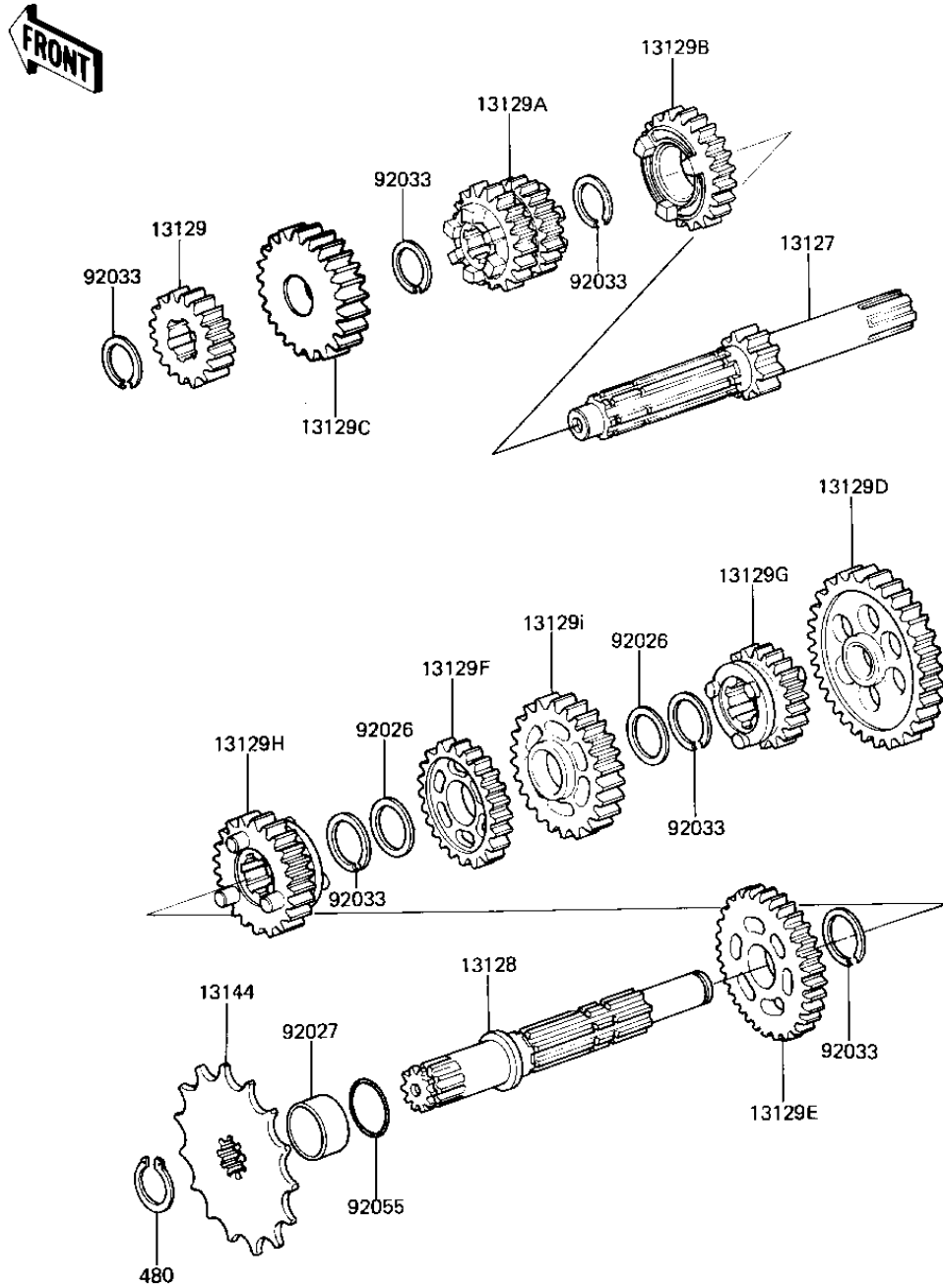


# 1982 AR80-A1 PARTS DIAGRAM

## TRANSMISSION

E1361-0074



# 1982 AR80-A1 PARTS LIST

## TRANSMISSION

ITEM NAME	PART NUMBER	QUANTITY
SHAFT-TRANSMISSION IN (Ref # 13127)	13127-1035	1
SHAFT-TRANSMISSION OU (Ref # 13128)	13128-1031	1
GEAR,INPUT,2ND,18T (Ref # 13129)	13129-1244	1
GEAR,INPUT,3RD&4TH,25 (Ref # 13129A)	13129-1245	1
GEAR,INPUT,5TH,27T (Ref # 13129B)	13129-1246	1
GEAR,INPUT,TOP,29T (Ref # 13129C)	13129-1247	1
GEAR,OUTPUT LOW,43T (Ref # 13129D)	13260-1320	1
GEAR,OUTPUT,2ND,38T (Ref # 13129E)	13129-1249	1
GEAR,OUTPUT,4TH,31T (Ref # 13129F)	13129-1251	1
GEAR,OUTPUT,5TH,29T (Ref # 13129G)	13129-1252	1
GEAR,OUTPUT,TOP,28T (Ref # 13129H)	13129-1253	1
GEAR,OUTPUT,3RD,34T (Ref # 13129I)	13129-1338	1
SPROCKET-OUTPUT,15T (Ref # 13144)	13144-1045	1
SPACER,17.2X23X0.5 (Ref # 92026)	92026-1037	2
COLLAR,17X22X10 (Ref # 92027)	92027-1289	1
RING,SNAP (Ref # 92033)	92033-1060	6
RING-O,17MM (Ref # 92055)	92055-1097	1
CIRCLIP 17MM (Ref # 480)	480J1700	1