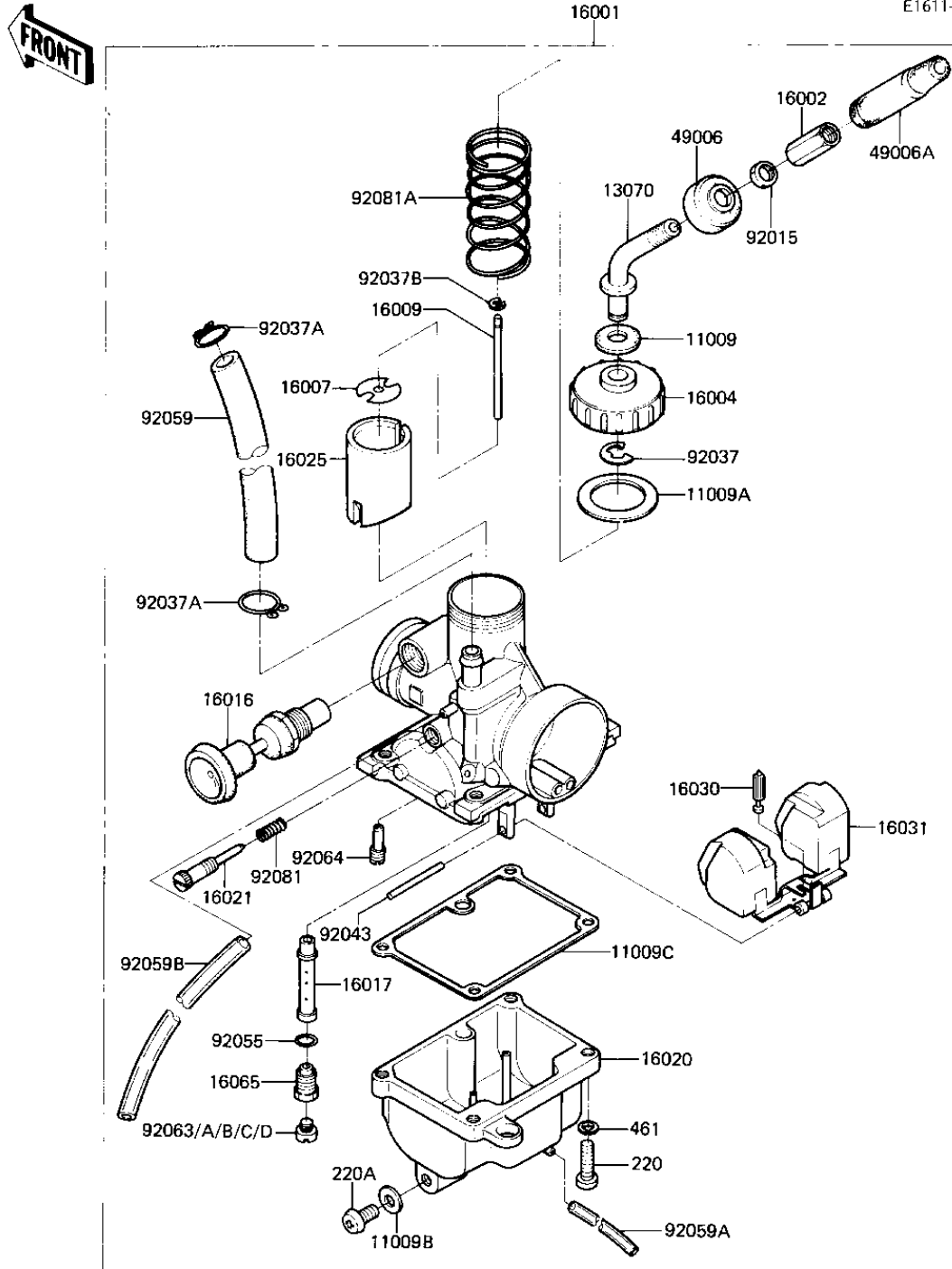


1982 AR80-A1 PARTS DIAGRAM

CARBURETOR 1/2

E1611-0085



1982 AR80-A1 PARTS LIST

CARBURETOR 1/2

| ITEM NAME | PART NUMBER | QUANTITY |
|--------------------------------------|-------------|----------|
| GASKET,CABLE GUIDE (Ref # 11009) | 11009-1074 | 1 |
| GASKET,MIXING CHAMBER (Ref # 11009A) | 11009-1295 | 1 |
| GASKET,DRAIN PLUG (Ref # 11009B) | 11009-1296 | 1 |
| GASKET,FLOAT CHAMBER (Ref # 11009C) | 11009-1297 | 1 |
| GUIDE,THROTTLE CABLE (Ref # 13070) | 13070-1068 | 1 |
| CARBURETOR (Ref # 16001) | 16001-1585 | 1 |
| ADJUSTER-CABLE (Ref # 16002) | 16002-1011 | 1 |
| CAP-CHAMBER,MIXING (Ref # 16004) | 16004-1016 | 1 |
| SEAT-SPRING (Ref # 16007) | 16007-1044 | 1 |
| NEEDLE-JET,4D44 (Ref # 16009) | 16009-1124 | 1 |
| PLUNGER,STARTER (Ref # 16016) | 16016-1025 | 1 |
| JET-NEEDLE,O-5 (Ref # 16017) | 16017-1115 | 1 |
| CHAMBER-FLOAT (Ref # 16020) | 16020-1006 | 1 |
| SCREW-THROTTLE STOP (Ref # 16021) | 16021-1036 | 1 |
| VALVE-THROTTLE,CA1.5 (Ref # 16025) | 16025-1076 | 1 |
| VALVE-FLOAT (Ref # 16030) | 16030-1026 | 1 |
| FLOAT (Ref # 16031) | 16031-1020 | 1 |
| HOLDER,NEEDLE JET (Ref # 16065) | 16065-1062 | 1 |
| BOOT,MIXING CHAMBER C (Ref # 49006) | 49006-1083 | 1 |
| BOOT,CABLE ADJUSTER (Ref # 49006A) | 49006-1084 | 1 |
| NUT CABLE ADJUST LOCK (Ref # 92015) | 16003-004 | 1 |
| CIRCLIP,CABLE GUIDE (Ref # 92037) | 16008-011 | 1 |
| CLAMP-PIPE (Ref # 92037A) | 92037-072 | 2 |
| CLAMP (Ref # 92037B) | 92037-1272 | 1 |
| PIN,FLOAT (Ref # 92043) | 92043-1126 | 1 |
| "0" RING (Ref # 92055) | 92055-044 | 1 |
| HOSE,FUEL TAP DIAPHRA (Ref # 92059) | 92059-1023 | 1 |
| TUBE,3X5X250,BLACK (Ref # 92059A) | 92059-1308 | 1 |
| TUBE,3X5X85 (Ref # 92059B) | 92059-1244 | 1 |

1982 AR80-A1 PARTS LIST

CARBURETOR 1/2

| ITEM NAME | PART NUMBER | QUANTITY |
|--------------------------------------|-------------|----------|
| JET-MAIN,#A60R (Ref # 92063) | 92063-1124 | 1 |
| JET-MAIN,#A62.5R (Ref # 92063A) | 92063-1125 | 1 |
| JET-MAIN,#A65R (Ref # 92063B) | 92063-1126 | 1 |
| JET-MAIN,#A57.5R (Ref # 92063C) | 92063-1127 | 1 |
| JET-MAIN,#A67.5R (Ref # 92063D) | 92063-1128 | 1 |
| JET-PILOT,#A25 (Ref # 92064) | 92064-1059 | 1 |
| SPRING,AIR SCREW (Ref # 92081) | 92081-1153 | 1 |
| SPRING,THROTTLE VALVE (Ref # 92081A) | 92081-1490 | 1 |
| SCREW PAN HEAD 4X16 (Ref # 220) | 220B0416 | 4 |
| SCREW PAN HEAD 5X8 (Ref # 220A) | 220B0508 | 1 |
| WASHER SPRING 4MM (Ref # 461) | 461F0400 | 4 |