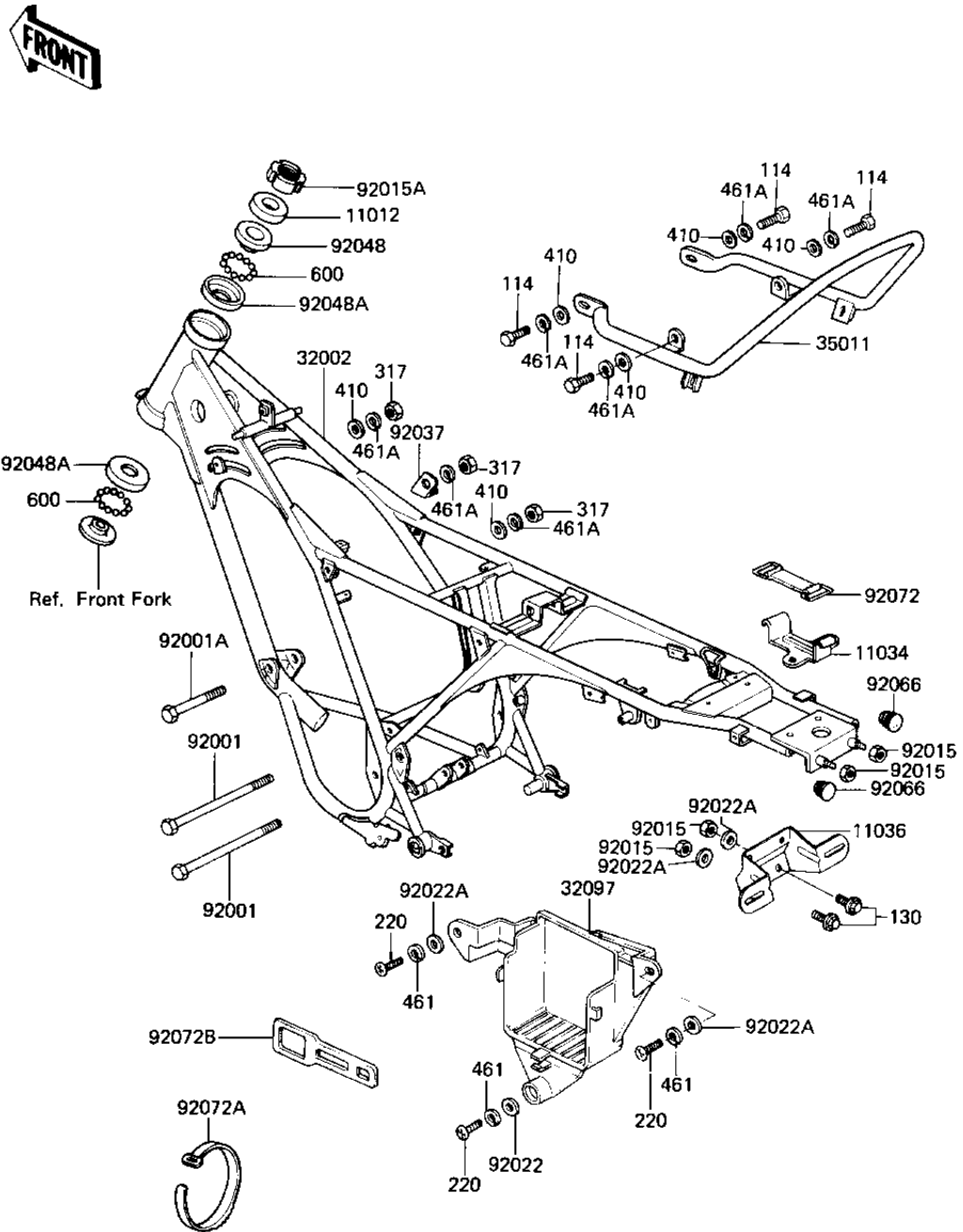


# 1982 AR80-A1 PARTS DIAGRAM

## FRAME/FRAME FITTINGS

F2120-0129



# 1982 AR80-A1 PARTS LIST

## FRAME/FRAME FITTINGS

ITEM NAME	PART NUMBER	QUANTITY
CAP STEERING STEM (Ref # 11012)	46098-004	1
BRACKET,TOOL KIT (Ref # 11034)	11034-1991	1
BRACKET,NUMBER PLATE (Ref # 11036)	11036-1509	1
FRAME-COMP (Ref # 32002)	32002-1489	1
CASE-BATTERY (Ref # 32097)	32097-1032	1
STAY,REAR (Ref # 35011)	35011-1134	1
BOLT,8X130 (Ref # 92001)	92001-1370	2
BOLT,8X70 (Ref # 92001A)	92001-1389	1
NUT,LOCK 6MM (Ref # 92015)	92017-014	4
NUT STEERING STEM LCK (Ref # 92015A)	92090-006	1
WASHER PLAIN (Ref # 92022)	92022-024	1
WASHER 6.5X20X1.6T (Ref # 92022A)	92022-125	4
GUIDE,HOSE (Ref # 92037)	13070-1232	1
CONE,STRG STM BRG,UP (Ref # 92048)	92047-014	1
RACE,STRG STM BEARING (Ref # 92048A)	92048-009	2
PLUG,18X3 (Ref # 92066)	32112-009	2
BAND TOOL (Ref # 92072)	92072-012	1
BAND,SHORT (Ref # 92072A)	92072-030	1
BAND,BATTERY (Ref # 92072B)	92072-1050	1
BOLT-SMALL-UPSET,8X22 (Ref # 114)	115B0822	4
BOLT (Ref # 130)	130B0612	2
SCREW PAN HEAD 6X14 (Ref # 220)	220B0614	3
NUT,8M/M (Ref # 317)	317B0800	3
WASHER PLAIN 8MM (Ref # 410)	410B0800	6
WASHER SPRING 6MM (Ref # 461)	461F0600	3
WASHER SPRING 8MM (Ref # 461A)	461F0800	7
BALL STEEL 3/16' (Ref # 600)	600A0600	46