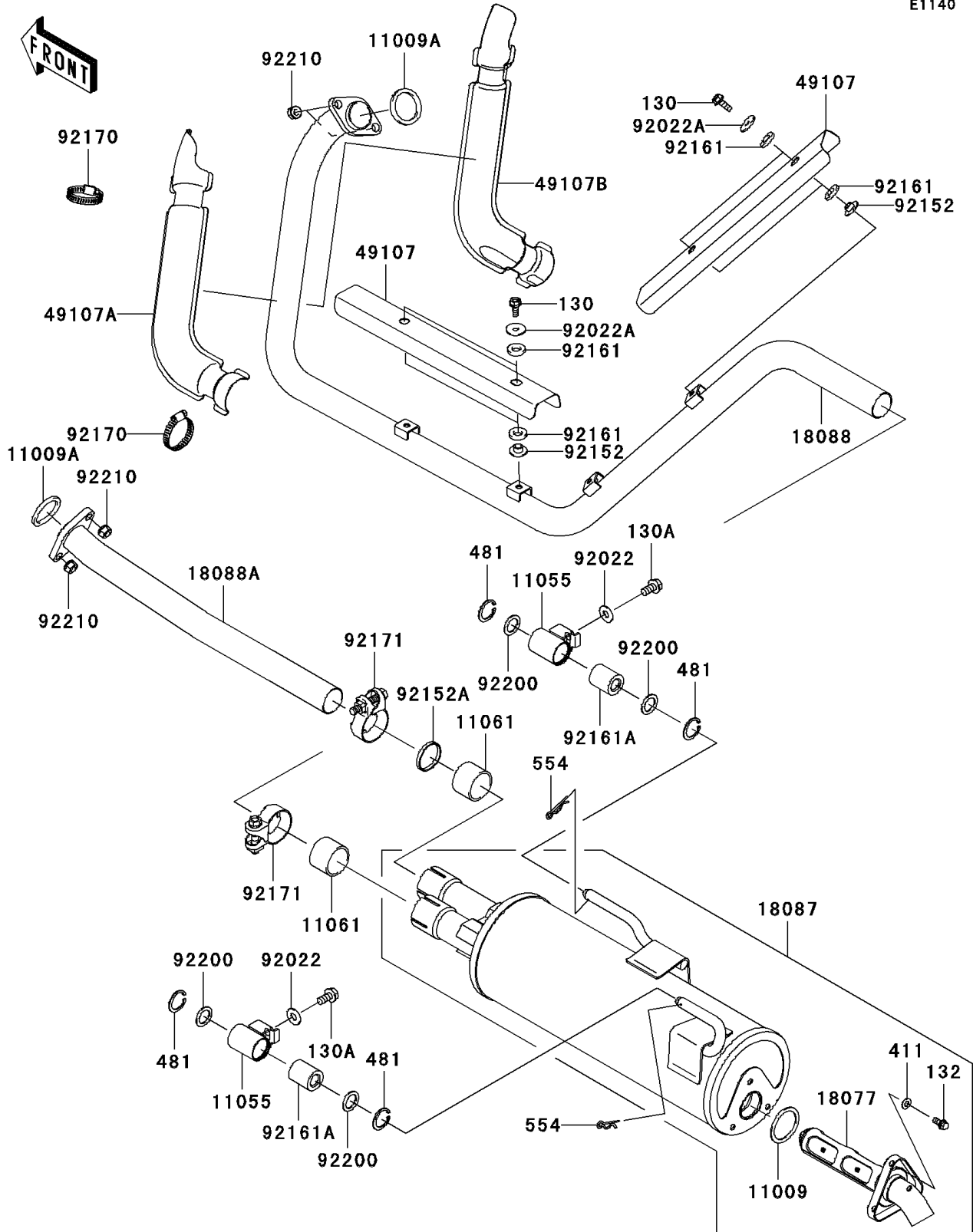


2008 Teryx® 750 4x4 NRA OUTDOORS™ PARTS DIAGRAM

Muffler(s)

E1140



2008 Teryx® 750 4x4 NRA OUTDOORS™ PARTS LIST

Muffler(s)

ITEM NAME	PART NUMBER	QUANTITY
BOLT-FLANGED,6X16 (Ref # 130)	130BD0616	4
BOLT-FLANGED,8X16 (Ref # 130A)	130CB0816	2
BOLT-FLANGED-SMALL,6X12 (Ref # 132)	132BD0612	3
WASHER-PLAIN,6MM (Ref # 411)	411S0600	3
CIRCLIP-TYPE-C,25MM (Ref # 481)	481J2500	4
PIN-SNAP,12MM (Ref # 554)	554DA1200	2
GASKET,EXHAUST PIPE HOLDER (Ref # 11009)	11009-1856	1
GASKET,EXHAUST HOLDER (Ref # 11009A)	11009-1894	2
BRACKET (Ref # 11055)	11055-0499	2
GASKET,MUFFLER CONNECTING (Ref # 11061)	11061-0360	2
ARRESTER-SPARK (Ref # 18077)	18077-0027	1
MUFFLER (Ref # 18087)	18087-0177	1
PIPE-EXHAUST,FR (Ref # 18088)	18088-0423	1
PIPE-EXHAUST,RR (Ref # 18088A)	18088-0430	1
COVER-EXHAUST PIPE,MIDDLE (Ref # 49107)	49107-0118	2
COVER-EXHAUST PIPE,FR,LH (Ref # 49107A)	49107-0130	1
COVER-EXHAUST PIPE,FR,RH (Ref # 49107B)	49107-0131	1
WASHER,8.5X20X1.6,BLACK (Ref # 92022)	92022-1317	2
WASHER,6.5X22X1.6 (Ref # 92022A)	92022-237	4
COLLAR (Ref # 92152)	92152-0423	4
COLLAR (Ref # 92152A)	92152-0741	1
DAMPER (Ref # 92161)	92161-0319	8
DAMPER (Ref # 92161A)	92161-0594	2
CLAMP (Ref # 92170)	92170-1036	2
CLAMP (Ref # 92171)	92171-1921	2
WASHER,17X24.5X1.2 (Ref # 92200)	92200-0421	4
NUT,8MM (Ref # 92210)	92210-1242	4