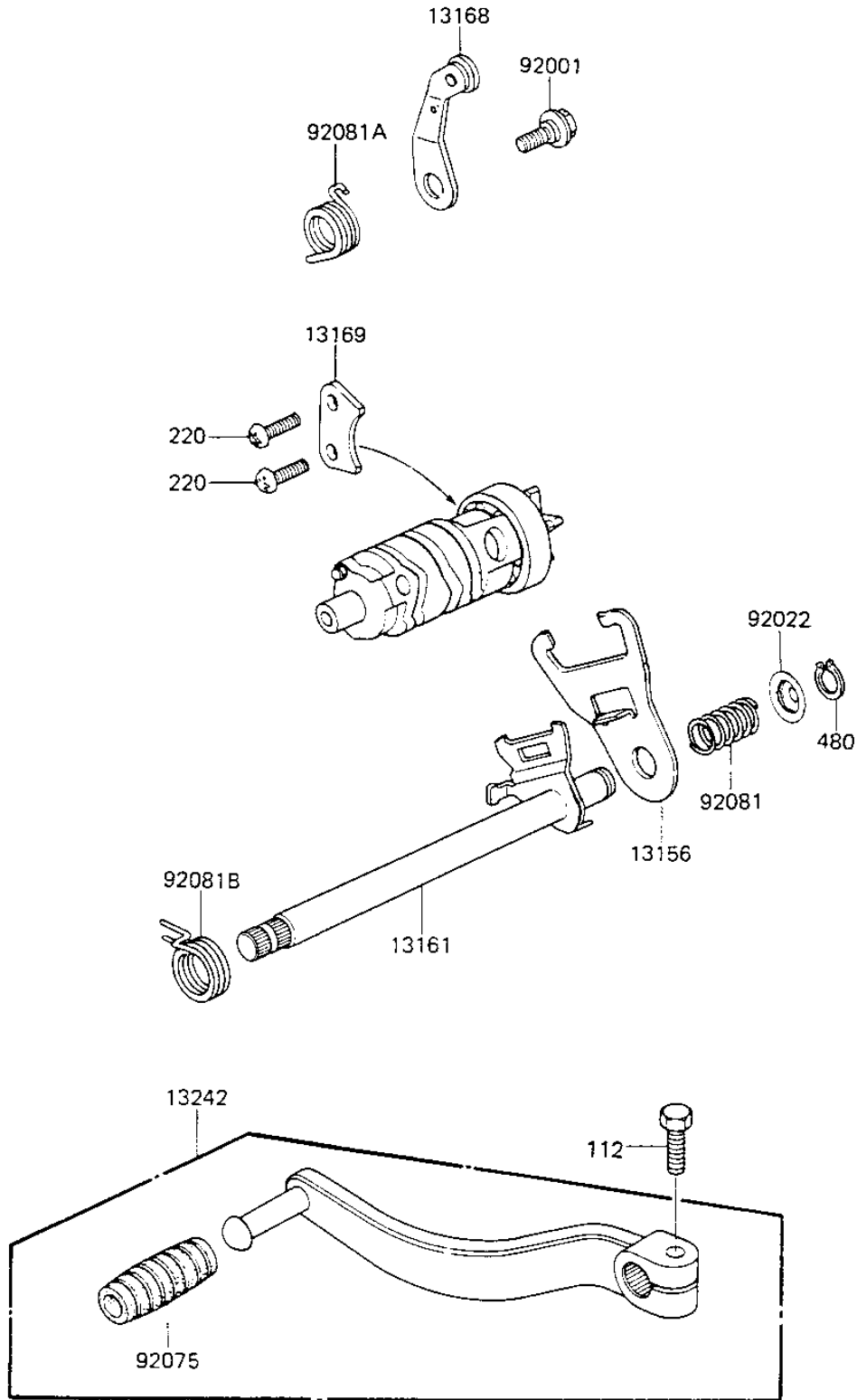


1983 KLR250 PARTS DIAGRAM

GEAR CHANGE MECHANISM

E1370-0094



1983 KLR250 PARTS LIST

GEAR CHANGE MECHANISM

| ITEM NAME | PART NUMBER | QUANTITY |
|--------------------------------------|-------------|----------|
| LEVER-CHANGE (Ref # 13156) | 13156-1122 | 1 |
| LEVER-COMP-CHANGE SHA (Ref # 13161) | 13161-1046 | 1 |
| LEVER,GEAR CHANGE (Ref # 13168) | 13168-1129 | 1 |
| PLATE,GEAR CHANGE (Ref # 13169) | 13169-014 | 1 |
| PEDAL GEAR CHANGE (Ref # 13242) | 13242-1066 | 1 |
| BOLT (Ref # 92001) | 92001-1715 | 1 |
| WASHER,CHANGE LEVER (Ref # 92022) | 92022-1406 | 1 |
| DAMPER,CHANGE PEDAL (Ref # 92075) | 92160-1036 | 1 |
| SPRING,CHANGE REVER (Ref # 92081) | 92081-1536 | 1 |
| SPRING,GEAR CHANGE LE (Ref # 92081A) | 92081-1537 | 1 |
| SPRING,CHG PEDL RTRN (Ref # 92081B) | 92083-028 | 1 |
| BOLT-UPSET,6X20 (Ref # 112) | 112G0620 | 1 |
| SCREW PAN HEAD 6X14 (Ref # 220) | 220B0614 | 2 |
| CIRCLIP,13MM (Ref # 480) | 480J1300 | 1 |