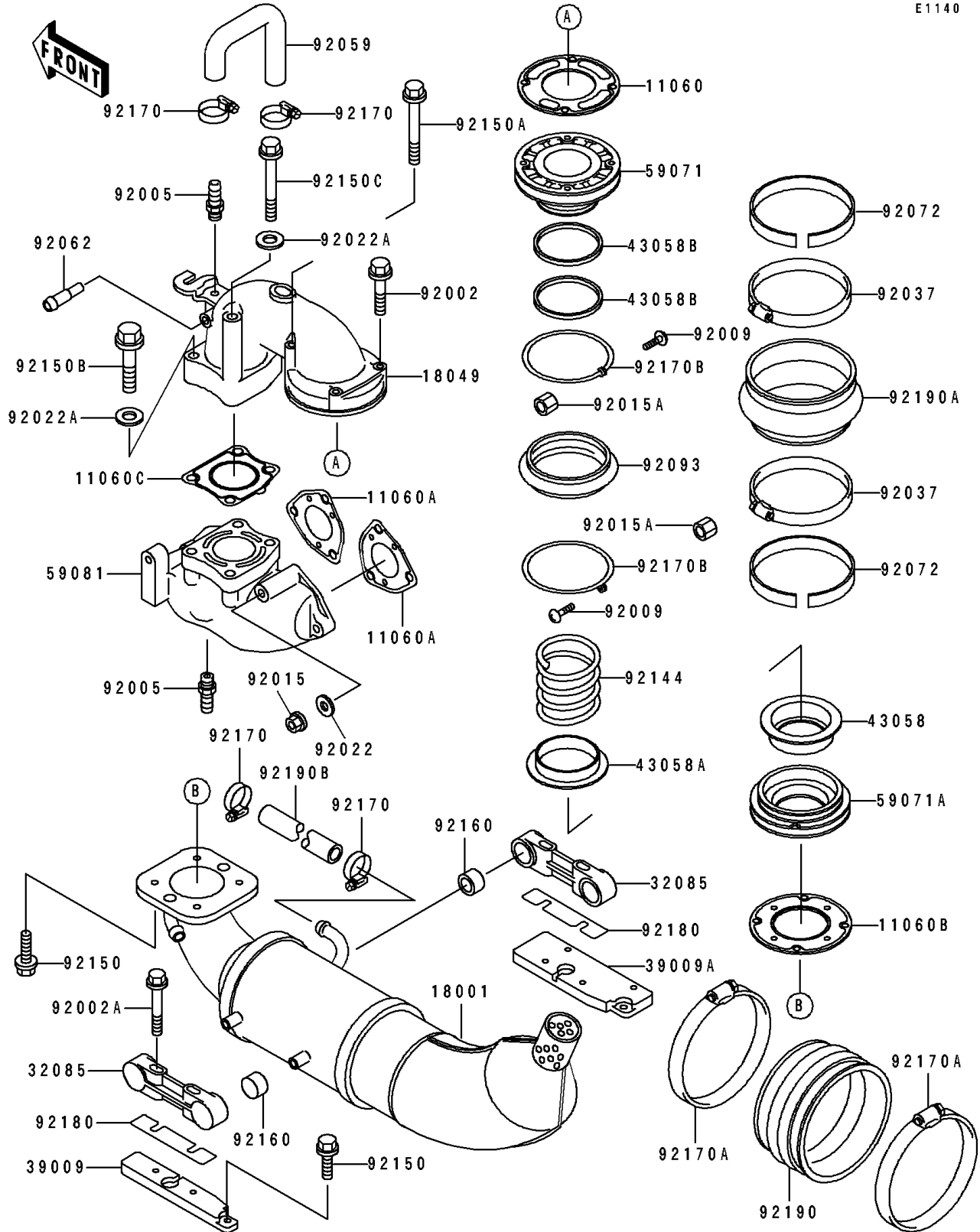


1994 Super Sport XI PARTS DIAGRAM

Muffler(s)

E1140



1994 Super Sport XI PARTS LIST

Muffler(s)

| ITEM NAME | PART NUMBER | QUANTITY |
|----------------------------------------|-------------|----------|
| GASKET,EXHAUST PIPE (Ref # 11060) | 11060-3718 | 1 |
| GASKET,EXHAUST PIPE (Ref # 11060A) | 11060-3721 | 2 |
| GASKET,MUFFLER (Ref # 11060B) | 11060-3724 | 1 |
| GASKET,EXHAUST MANIFOLD (Ref # 11060C) | 11060-3732 | 1 |
| MUFFLER (Ref # 18001) | 18001-3747 | 1 |
| PIPE-EXHAUST (Ref # 18049) | 18049-3739 | 1 |
| STOPPER (Ref # 32085) | 32085-3713 | 2 |
| BLOCK-MOUNT,LH (Ref # 39009) | 39009-3707 | 1 |
| BLOCK-MOUNT,RH (Ref # 39009A) | 39009-3708 | 1 |
| RING (Ref # 43058) | 43058-3705 | 1 |
| RING (Ref # 43058A) | 43058-3706 | 1 |
| RING (Ref # 43058B) | 43058-3707 | 2 |
| JOINT,UPP (Ref # 59071) | 59071-3728 | 1 |
| JOINT,LWR (Ref # 59071A) | 59071-3729 | 1 |
| MANIFOLD-EXHAUST (Ref # 59081) | 59081-3713 | 1 |
| BOLT,6X35 (Ref # 92002) | 92002-3715 | 2 |
| BOLT,6X45 (Ref # 92002A) | 92002-3717 | 4 |
| FITTING,HOSE (Ref # 92005) | 92005-3712 | 2 |
| SCREW,3X14 (Ref # 92009) | 92009-3796 | 2 |
| NUT,CAP,8MM (Ref # 92015) | 92015-1371 | 6 |
| NUT,3MM (Ref # 92015A) | 92015-3825 | 2 |
| WASHER,8.2X18X1.5 (Ref # 92022) | 92022-1964 | 6 |
| WASHER,10.2X20X1.5 (Ref # 92022A) | 92022-3742 | 4 |
| CLAMP (Ref # 92037) | 92037-3706 | 2 |
| TUBE,HEAD-EXHAUST (Ref # 92059) | 92059-3872 | 1 |
| NOZZLE (Ref # 92062) | 92062-3705 | 1 |
| BAND,ID=111 (Ref # 92072) | 92072-3740 | 2 |
| SEAL (Ref # 92093) | 92093-3738 | 1 |
| SPRING (Ref # 92144) | 92144-3739 | 1 |

1994 Super Sport XI PARTS LIST

Muffler(s)

| ITEM NAME | PART NUMBER | QUANTITY |
|------------------------------|-------------|----------|
| BOLT,6X18 (Ref # 92150) | 92150-3729 | 8 |
| BOLT,6X80 (Ref # 92150A) | 92150-3761 | 2 |
| BOLT,10X50 (Ref # 92150B) | 92150-3819 | 2 |
| BOLT,10X145 (Ref # 92150C) | 92150-3820 | 2 |
| DAMPER (Ref # 92160) | 92160-3740 | 4 |
| CLAMP (Ref # 92170) | 92170-3718 | 4 |
| CLAMP (Ref # 92170A) | 92170-3721 | 2 |
| CLAMP (Ref # 92170B) | 92170-3731 | 2 |
| SHIM (Ref # 92180) | 92180-3701 | AR |
| TUBE (Ref # 92190) | 92190-3709 | 1 |
| TUBE,JOINT (Ref # 92190A) | 92190-3712 | 1 |
| TUBE,13X19X140 (Ref # 92191) | 92191-3717 | 1 |