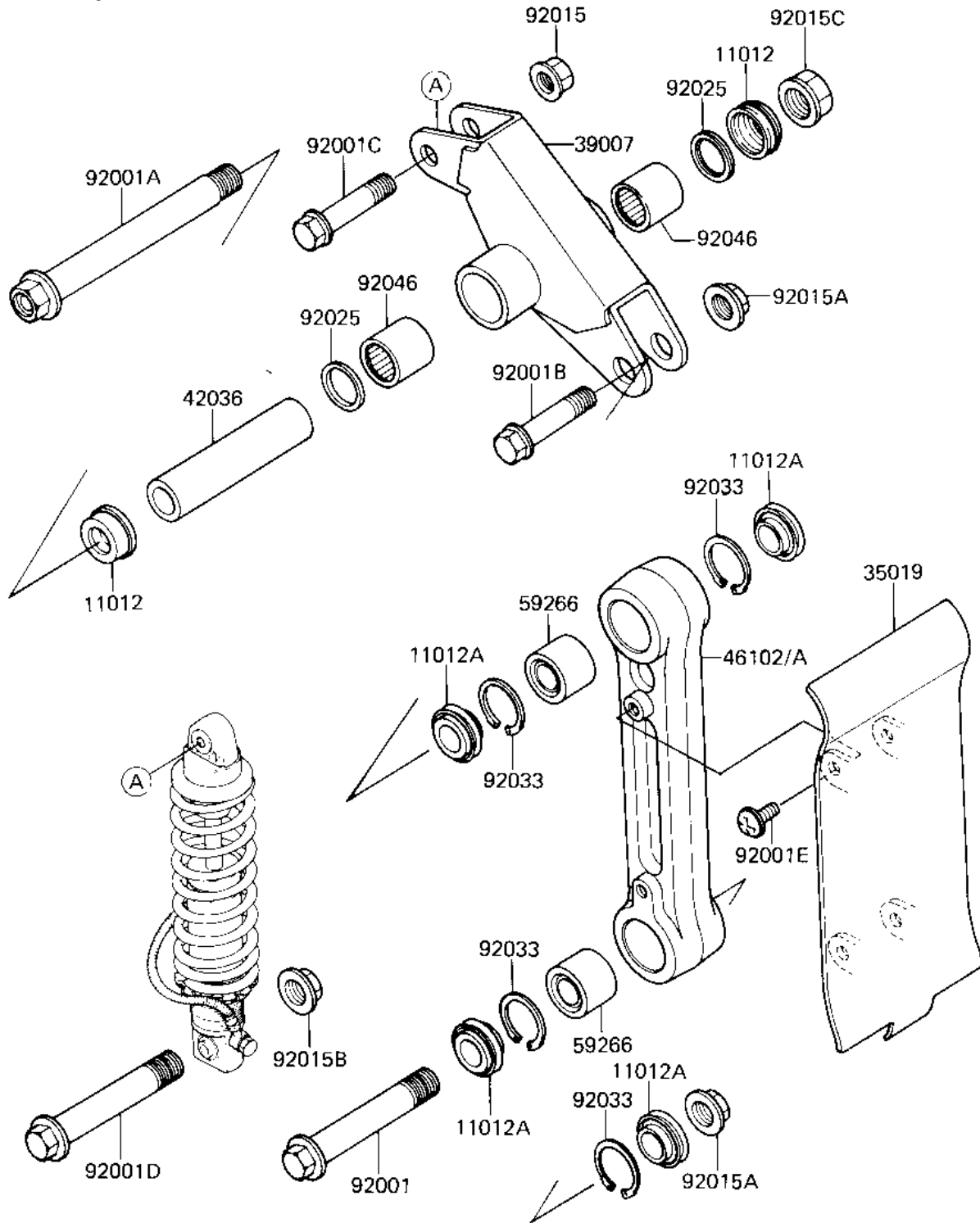


1983 KX250 PARTS DIAGRAM

REAR SUSPENSION ('83 KX250-C1)



F2150-0019



1983 KX250 PARTS LIST

REAR SUSPENSION ('83 KX250-C1)

| ITEM NAME | PART NUMBER | QUANTITY |
|-------------------------------------|-------------|----------|
| CAP (Ref # 11012) | 11012-1203 | 2 |
| CAP,ROD (Ref # 11012A) | 11012-1258 | 4 |
| FLAP,ROD (Ref # 35019) | 35019-1112 | 1 |
| ARM-SUSP,UNIT TRAK (Ref # 39007) | 39007-1022 | 1 |
| SLEEVE,SUSPENSION ARM (Ref # 42036) | 42036-1063 | 1 |
| ROD,UNI TRAK (Ref # 46102) | 46102-1056 | 1 |
| ROD,UNI TRAK,L=203 (Ref # 46102A) | 46102-1066 | 1 |
| JOINT-BALL,SB142820E0 (Ref # 59266) | 59266-1052 | 2 |
| BOLT,FLANGED,14X82 (Ref # 92001) | 92001-1686 | 1 |
| BOLT,SUSPENSION ARM (Ref # 92001A) | 92001-1687 | 1 |
| BOLT,FLANGED,14X57 (Ref # 92001B) | 92001-1688 | 1 |
| BOLT,FLANGED,10X50 (Ref # 92001C) | 92001-1692 | 1 |
| BOLT,FLANGED,12X88 (Ref # 92001D) | 92001-1693 | 1 |
| SCREW,6X10 (Ref # 92001E) | 92009-1286 | 4 |
| NUT,10MM (Ref # 92015) | 92015-1415 | 1 |
| NUT,14MM (Ref # 92015A) | 92015-1407 | 2 |
| NUT-12MM (Ref # 92015B) | 92015-1156 | 1 |
| NUT,16MM (Ref # 92015C) | 92015-1046 | 1 |
| SHIM (Ref # 92025) | 92025-1229 | 2 |
| RING,SNAP (Ref # 92033) | 92033-1064 | 4 |
| BEARING-NEEDLE (Ref # 92046) | 92046-1041 | 2 |