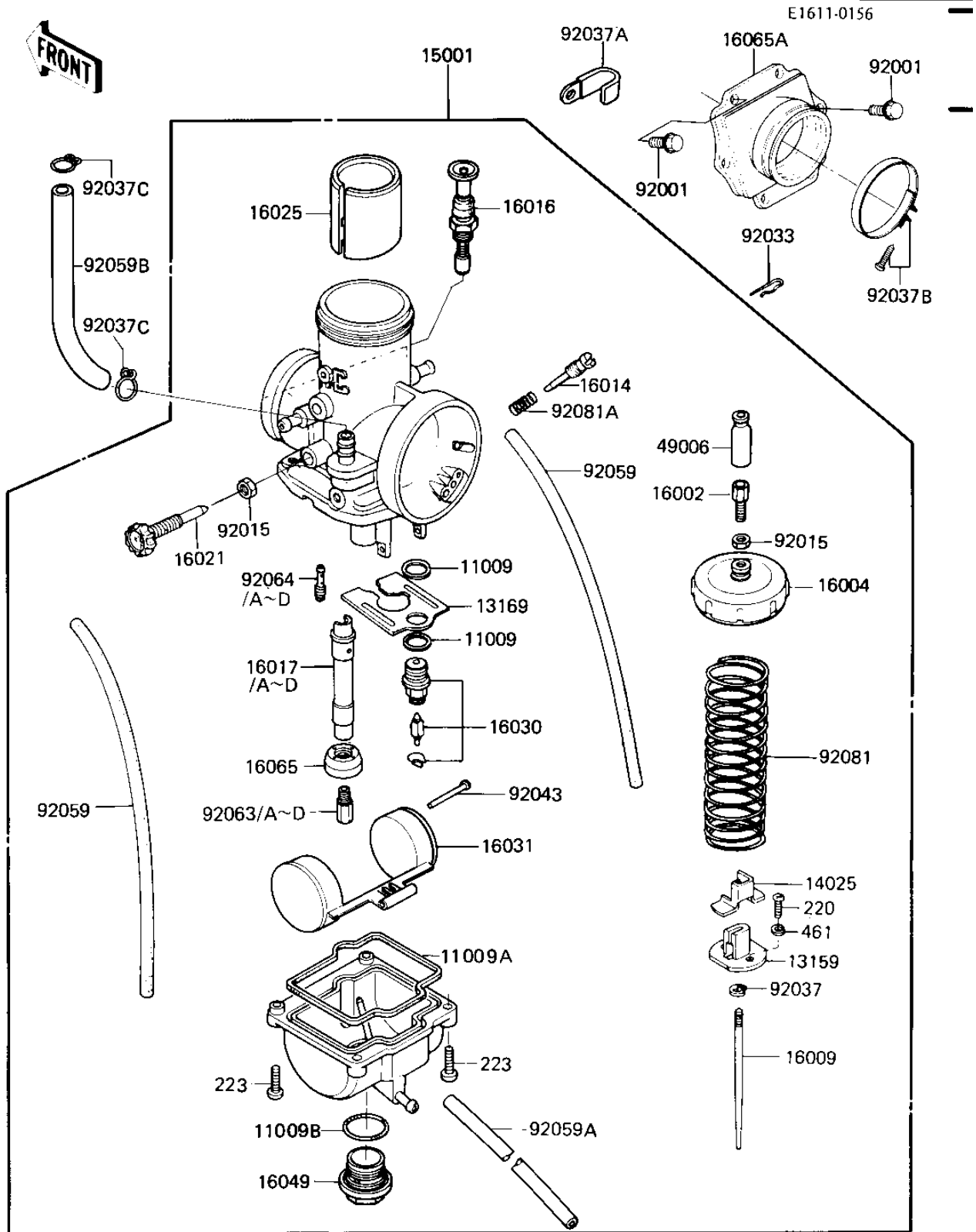


1984 KX250 PARTS DIAGRAM

CARBURETOR ('84 KX250-C2)



1984 KX250 PARTS LIST

CARBURETOR ('84 KX250-C2)

ITEM NAME	PART NUMBER	QUANTITY
GASKET,FLOAT VALVE (Ref # 11009)	11009-1076	2
GASKET,FLOAT CHAMBER (Ref # 11009A)	16019-028	1
GASKET-COVER (Ref # 11009B)	16038-009	1
CONNECTOR,THROTTLE (Ref # 13159)	13159-1010	1
PLATE,FLOAT CHAMBER (Ref # 13169)	13169-1520	1
COVER,THROTTLE (Ref # 14025)	14025-1478	1
CARBURETOR (Ref # 15001)	16001-1927	1
CABLE ADJUSTER (Ref # 16002)	16002-011	1
CAP-MIXING CHAMBER (Ref # 16004)	16004-026	1
NEEDLE-JET,6J04 (Ref # 16009)	16009-1225	1
SCREW (Ref # 16014)	16014-006	1
PLUNGER,STARTER (Ref # 16016)	16016-1026	1
JET-NEEDLE,R-4 (Ref # 16017)	16017-1212	1
JET-NEEDLE,R-6 (Ref # 16017A)	16017-1213	1
JET-NEEDLE,R-2 (Ref # 16017B)	16017-1250	1
JET-NEEDLE,R-0 (Ref # 16017C)	16017-1238	1
JET-NEEDLE,Q-8 (Ref # 16017D)	16017-1239	1
SCREW-THROTTLE STOP (Ref # 16021)	16021-1108	1
VALVE-THROTTLE,CA 2.5 (Ref # 16025)	16025-1112	1
VALVE-FLOAT (Ref # 16030)	16030-1015	1
FLOAT (Ref # 16031)	16031-030	1
COVER,MAIN JET (Ref # 16049)	16049-1005	1
HOLDER-CARBURETOR (Ref # 16065)	16065-1040	1
HOLDER-CARBURETOR (Ref # 16065A)	16065-1048	1
BOOT,CARBURETOR (Ref # 49006)	49006-1169	1
BOLT-FLANGED-SMALL (Ref # 92001)	132G0620	6
NUT-CABLE ADJUST LOCK (Ref # 92015)	16003-006	2
CIRCLIP (Ref # 92033)	92036-018	1
CIRCLIP (Ref # 92037)	16008-010	1

1984 KX250 PARTS LIST

CARBURETOR ('84 KX250-C2)

ITEM NAME	PART NUMBER	QUANTITY
CLAMP,WIRING HARNESS (Ref # 92037A)	92037-1069	1
CLAMP,CARBURETOR HOLD (Ref # 92037B)	92037-1313	1
CLAMP,CHAIN OILER (Ref # 92037C)	92037-147	2
PIN,FLOAT (Ref # 92043)	16032-008	1
TUBE,3.5X6.5X410 (Ref # 92059)	92059-1142	2
TUBE,3.5X6.5X300 (Ref # 92059A)	92059-1233	1
TUBE,FUEL,6.5X11.5 (Ref # 92059B)	92059-1252	1
JET-MAIN NO 300A (Ref # 92063)	92063-045	1
JET-MAIN NO 310A (Ref # 92063A)	92063-046	1
JET-MAIN NO 320A (Ref # 92063B)	92063-047	1
JET-MAIN NO 330A (Ref # 92063C)	92063-048	1
MAIN JET NO 340A (Ref # 92063D)	92063-049	1
JET-PILOT NO 30 (Ref # 92064)	92064-022	1
JET-PILOT NO 35 (Ref # 92064A)	92064-023	1
JET-PILOT NO 40 (Ref # 92064B)	92064-024	1
JET-PILOT NO 25 (Ref # 92064C)	92064-032	1
JET-PILOT,#27.5 (Ref # 92064D)	92064-1033	1
SPRING,THROTTLE VALVE (Ref # 92081)	16006-028	1
SPRING-THR STOP SCREW (Ref # 92081A)	16022-007	1
SCREW PAN HEAD 3X8 (Ref # 220)	220B0308	2
SCREW-PAN-WS-CROS (Ref # 223)	223B0516	4
WASHER SPRING 3MM (Ref # 461)	461F0300	2