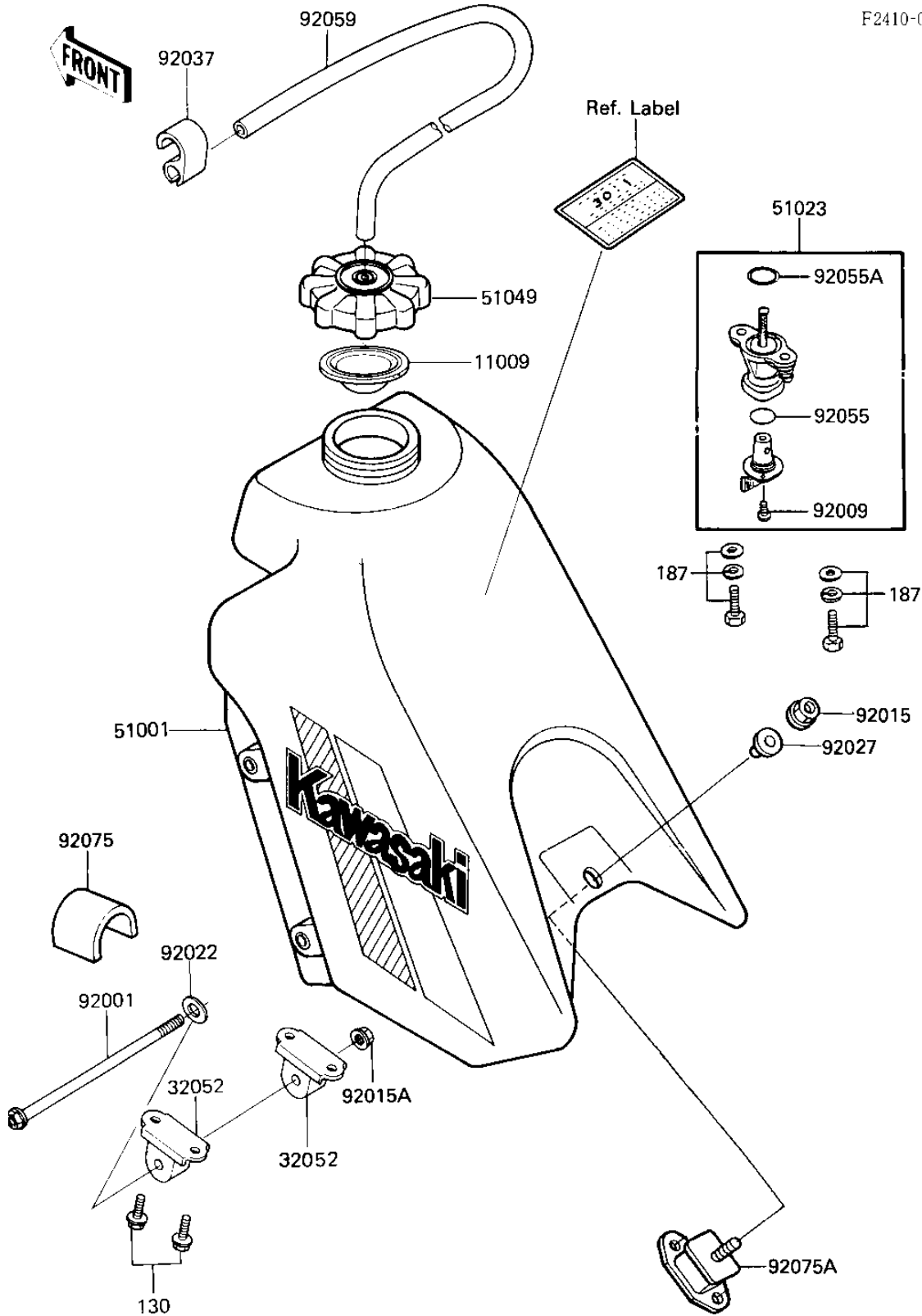


# 1984 KX250 PARTS DIAGRAM

FUEL TANK ('84 KX250-C2)

F2410-0220



# 1984 KX250 PARTS LIST

## FUEL TANK ('84 KX250-C2)

| ITEM NAME                           | PART NUMBER   | QUANTITY |
|-------------------------------------|---------------|----------|
| GASKET,FUEL TANK (Ref # 11009)      | 11009-1452    | 2        |
| BRACKET-TANK (Ref # 32052)          | 32052-1104    | 2        |
| TANK-COMP-FUEL,L.GREE (Ref # 51001) | 51001-5413-6W | 1        |
| TAP-ASSY-FUEL (Ref # 51023)         | 51023-1115    | 1        |
| CAP-TANK,FUEL (Ref # 51049)         | 51049-1006    | 1        |
| BOLT,FLANGED,6X120 (Ref # 92001)    | 92001-1907    | 1        |
| SCREW PAN HEAD 3X8 (Ref # 92009)    | 220E0308      | 2        |
| NUT-8MM (Ref # 92015)               | 92015-1143    | 1        |
| NUT-6MM (Ref # 92015A)              | 92015-1078    | 1        |
| WASHER,9X24X3.2 (Ref # 92022)       | 92022-1295    | 1        |
| COLLAR,FUEL TANK (Ref # 92027)      | 92027-1745    | 1        |
| CLAMP,TUBE (Ref # 92037)            | 92037-1377    | 1        |
| RING-O (Ref # 92055)                | 92055-1299    | 1        |
| RING-O (Ref # 92055A)               | 92055-1300    | 1        |
| TUBE,5X9X250 (Ref # 92059)          | 92059-1258    | 1        |
| DAMPER (Ref # 92075)                | 92075-1382    | 1        |
| DAMPER,FUEL TANK (Ref # 92075A)     | 92075-1587    | 1        |
| BOLT,FLANGED,6X12 (Ref # 130)       | 130G0612      | 6        |
| BOLT-UPSET-WSP (Ref # 187)          | 187B0616      | 2        |