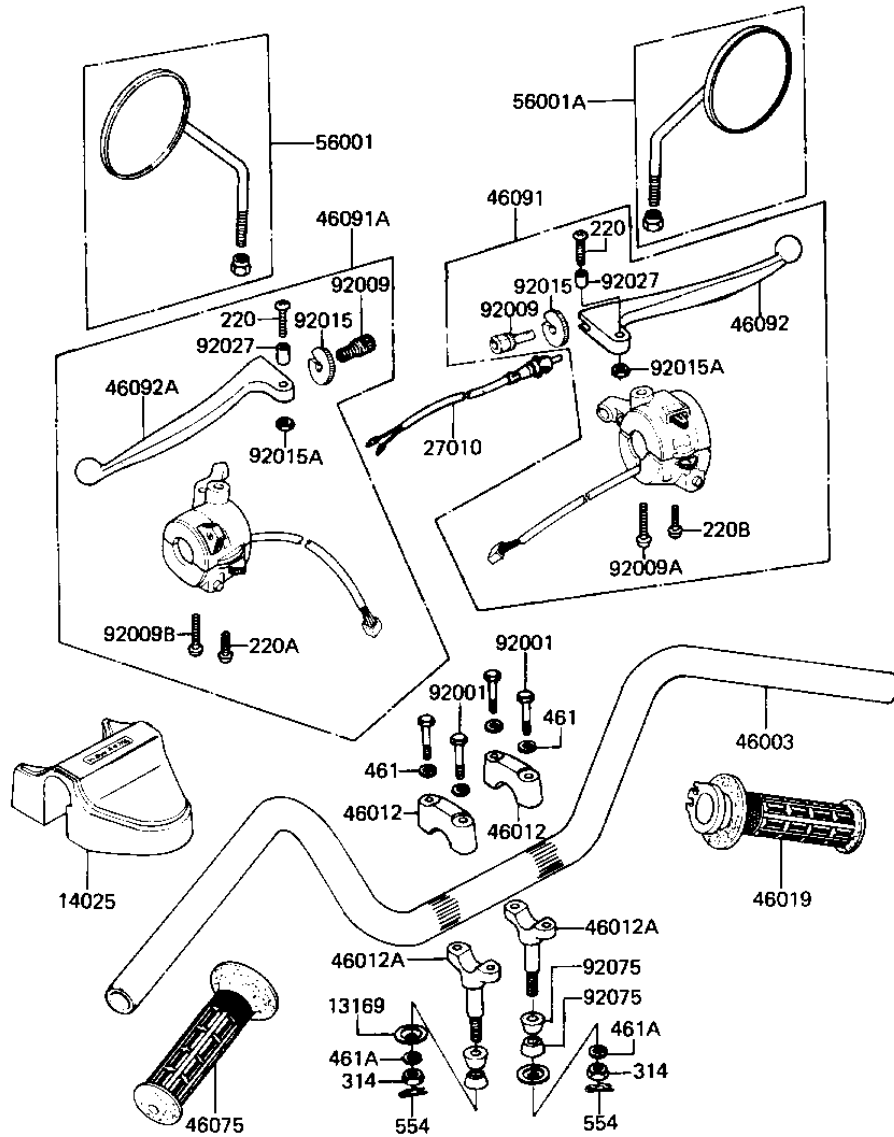


1983 LTD Belt PARTS DIAGRAM

HANDLEBAR

F2310-0198



1983 LTD Belt PARTS LIST

HANDLEBAR

ITEM NAME	PART NUMBER	QUANTITY
CAP HANDLEBAR HOLDER (Ref # 13169)	46016-003	2
COVER,HANDLE (Ref # 14025)	14025-1421	1
SWITCH-FR. BRAKE LAMP (Ref # 27010)	27021-004	1
HANDLEBAR (Ref # 46003)	46003-1088	1
HOLDER-HANDLEBAR (Ref # 46012)	46012-008	2
HOLDER-HANDLEBAR LOW (Ref # 46012A)	46012-010	2
GRIP-ASSY,THROTTLE (Ref # 46019)	46019-1018	1
GRIP,LH (Ref # 46075)	46075-1022	1
HOUSING-ASSY-CONTROL, (Ref # 46091)	46091-1249	1
HOUSING-ASSY-CONTROL, (Ref # 46091A)	46091-1250	1
LEVER,FRONT BRAKE (Ref # 46092)	46058-019	1
LEVER,CLUTCH (Ref # 46092A)	46092-024	1
REAR VIEW MIRROR,L.H. (Ref # 56001)	56001-1055	1
MIRROR-ASSY,RH (Ref # 56001A)	56001-1077	1
BOLT 8X38 (Ref # 92001)	92001-1405	4
SCREW CABLE ADJUST (Ref # 92009)	46055-003	2
SCREW,PAN HEAD,5X48 (Ref # 92009A)	92009-1017	1
SCREW,PAN HEAD,5X38 (Ref # 92009B)	92009-1018	1
NUT-LOCK (Ref # 92015)	46056-005	2
NUT-LOCK,5MM (Ref # 92015A)	92019-014	2
COLLAR,LEVER (Ref # 92027)	92027-1042	2
DAMPER,HANDLE HOLDER (Ref # 92075)	92075-1448	4
SCREW PAN HEAD 5X22 (Ref # 220)	220B0522	2
SCREW-PAN-CROS,5X25 (Ref # 220A)	220B0525	1
SCREW PAN HEAD 5X30 (Ref # 220B)	220B0530	1
NUT,10MM (Ref # 314)	314B1000	2
WASHER SPRING 8MM (Ref # 461)	461F0800	4
WASHER SPRING 10MM (Ref # 461F)	461F1000	2
PIN,SNAP (Ref # 554)	554A0800	2