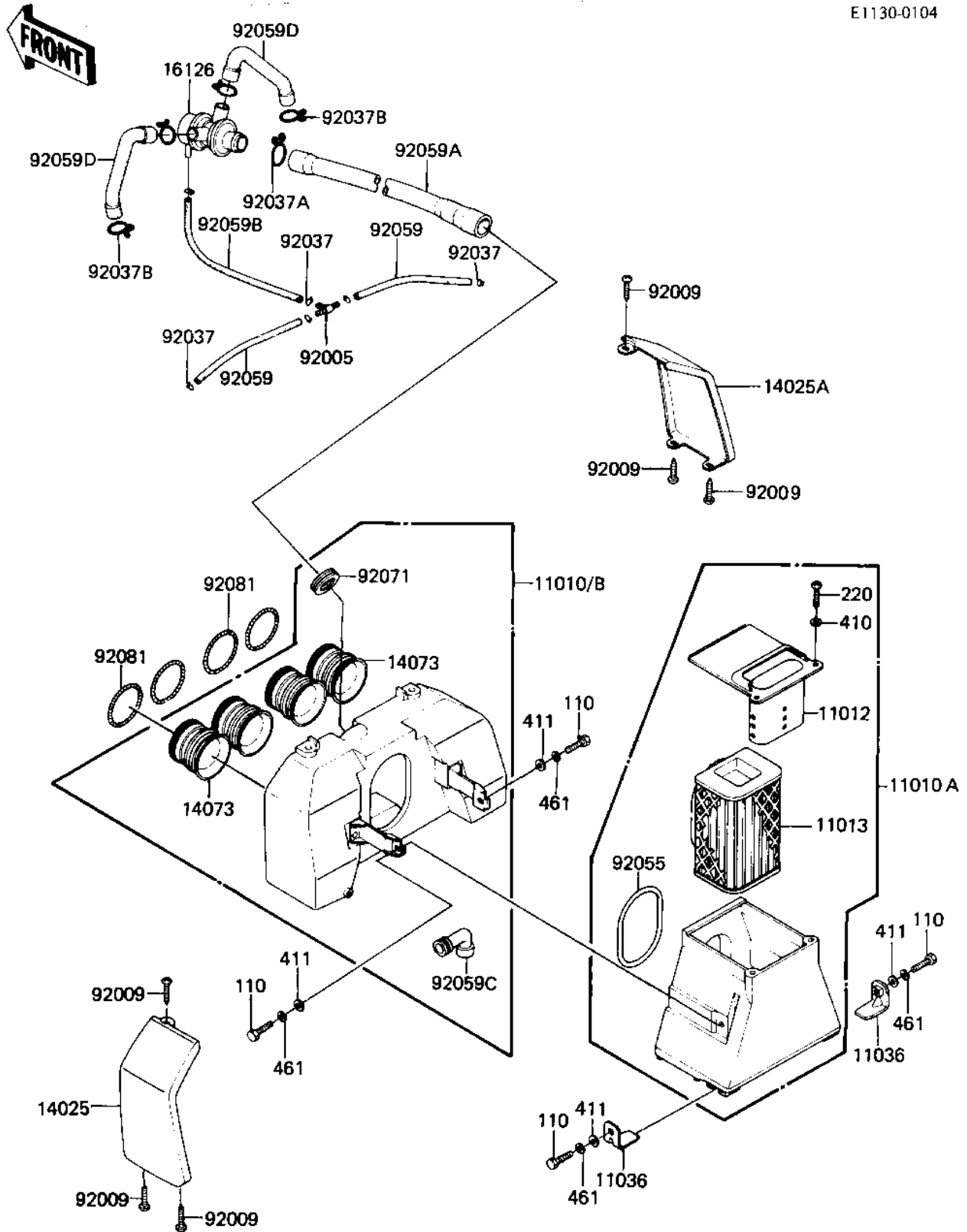


1983 LTD Shaft PARTS DIAGRAM

AIR CLEANER

E1130-0104



1983 LTD Shaft PARTS LIST

AIR CLEANER

| ITEM NAME | PART NUMBER | QUANTITY |
|--------------------------------------------|-------------|----------|
| FILTER-ASSY-AIR,FR (Ref # 11010) | 11010-1148 | 1 |
| FILTER-ASSY-AIR,RR (Ref # 11010A) | 11010-1149 | 1 |
| FILTER-ASSY-AIR,FR (Canada) (Ref # 11010B) | 11010-1152 | 1 |
| CAP,AIR FILTER (Ref # 11012) | 11012-1183 | 1 |
| ELEMENT,AIR CLNR (Ref # 11013) | 11013-1013 | 1 |
| BRACKET-A,AIR FILTER, (Ref # 11036) | 11036-1514 | 2 |
| COVER,AIR FILTER,LH,C (Ref # 14025) | 14025-1570 | 1 |
| COVER,AIR FILTER,RH,C (Ref # 14025A) | 14025-1571 | 1 |
| DUCT,AIR FILTER,FR (Ref # 14073) | 14073-1083 | 4 |
| VALVE ASSY,AIR SWITCH (Ref # 16126) | 16126-1017 | 1 |
| FITTING,TUBE (Ref # 92005) | 92005-1017 | 1 |
| SCREW,TAPPING,5X12 (Ref # 92009) | 92009-1105 | 6 |
| CLAMP-PIPE (Ref # 92037) | 92037-072 | 6 |
| CLAMP (Ref # 92037A) | 92037-1076 | 1 |
| CLAMP,BREATHER TUBE (Ref # 92037B) | 92037-213 | 4 |
| RING-0,91MM (Ref # 92055) | 92055-1137 | 1 |
| TUBE,VACUUM,LONG (Ref # 92059) | 92059-1162 | 2 |
| TUBE,19X21X340L (Ref # 92059A) | 92059-1039 | 1 |
| TUBE,4X9X220L (Ref # 92059B) | 92059-1040 | 1 |
| TUBE,AIR FILTER BLEED (Ref # 92059C) | 92059-1170 | 1 |
| TUBE,AIR (Ref # 92059D) | 92059-1208 | 2 |
| GROMMET,AIR CLEANER (Ref # 92071) | 92071-1013 | 1 |
| SPRING,AIR FILTER DUC (Ref # 92081) | 92144-1771 | 4 |
| BOLT-UPSET,6X12 (Ref # 110) | 112G0612 | 4 |
| SCREW PAN HEAD 6X12 (Ref # 220) | 220B0612 | 2 |
| WASHER PLAIN 6MM (Ref # 410) | 410B0600 | 2 |
| WASHER PLAIN 6MM (Ref # 411) | 411B0600 | 4 |
| WASHER SPRING 6MM (Ref # 461) | 461F0600 | 4 |