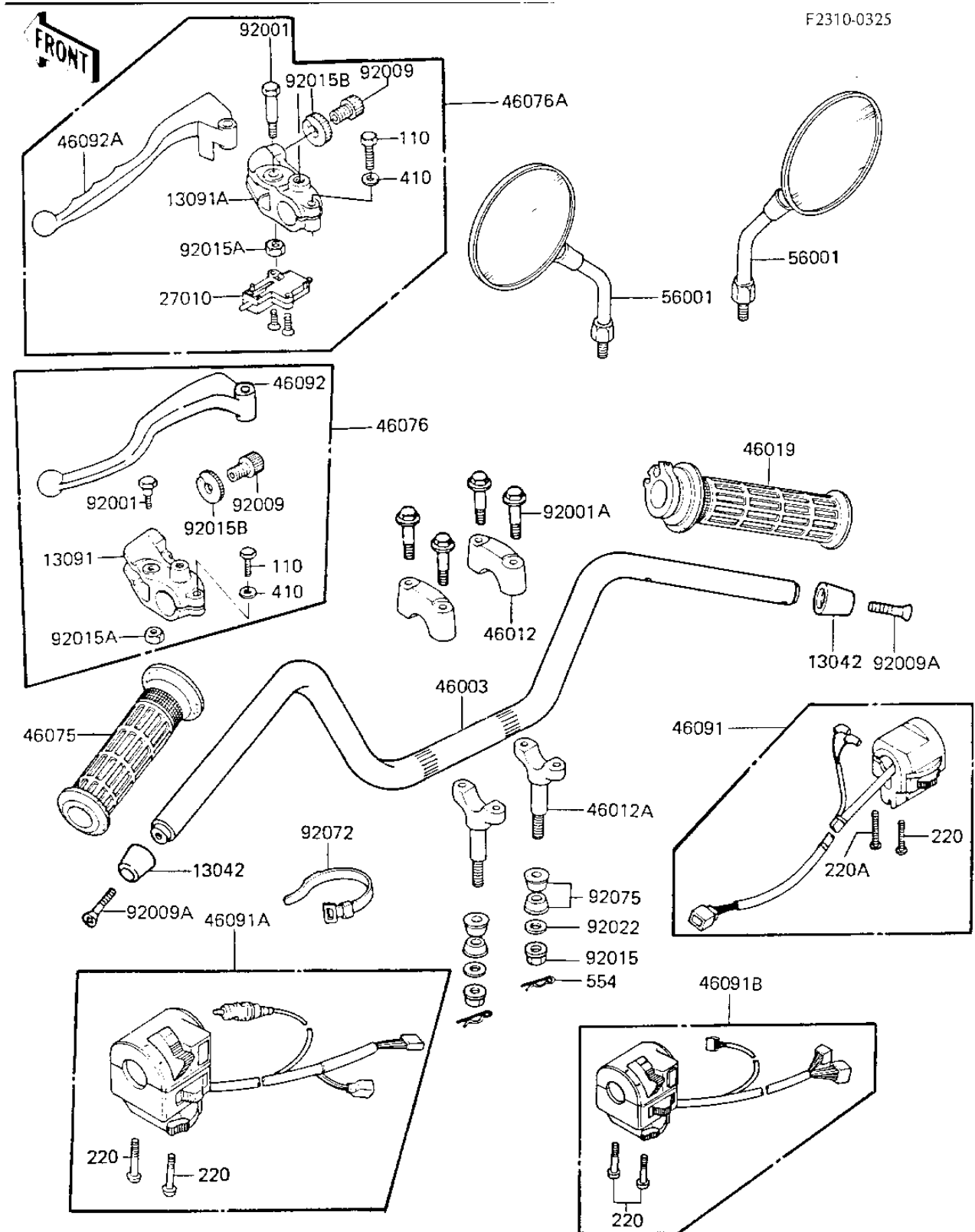


1983 LTD Belt PARTS DIAGRAM

HANDLEBAR

F2310-0325



1983 LTD Belt PARTS LIST

HANDLEBAR

ITEM NAME	PART NUMBER	QUANTITY
WEIGHT,HANDLE (Ref # 13042)	13042-1005	2
HOLDER,CLUTCH LEVER (Ref # 13091)	13091-1046	1
HANDLE (Ref # 46003)	46003-1114	1
HOLDER-HANDLEBAR (Ref # 46012)	46012-008	2
HOLDER-HANDLEBAR LOW (Ref # 46012A)	46012-010	2
GRIP-ASSY,THROTTLE (Ref # 46019)	46019-1021	1
GRIP,LH (Ref # 46075)	46075-1028	1
LEVER-ASSY-GRIP.CLUTC (Ref # 46076)	46076-1036	1
HOUSING-ASSY-CNTRL,RH (Ref # 46091)	46091-1214	1
HOUSING-ASSY-CONTROL, (Ref # 46091A)	46091-1256	1
LEVER-GRIP,CLUTCH (Ref # 46092)	46092-1041	1
MIRROR-ASSY (Ref # 56001)	56001-1340	2
BOLT,CLUTCH LEVER,BLA (Ref # 92001)	92001-1548	1
BOLT,FLANGED,8X35 (Ref # 92001A)	92001-1910	4
SCREW,CABLE ADJUST,8 (Ref # 92009)	92009-1134	1
SCREW,HUNDLE WEIGHT (Ref # 92009A)	92009-1257	2
NUT,FLANGED,10MM (Ref # 92015)	92015-1428	2
NUT,LOCK,6MM,BLACK (Ref # 92015A)	92015-1191	2
NUT,CABLE ADJUST LOCK (Ref # 92015B)	92015-1197	1
WASHER-HANDLEBAR FIT (Ref # 92022)	92022-196	2
BAND,SHORT (Ref # 92072)	92072-030	4
DAMPER RUBBER,HANDLE (Ref # 92075)	92075-275	4
UNAVAILABLE IN PRICE BOOK (Ref # 110)	11000622	1
SCREW-PAN-CROS (Ref # 220)	220B0535	3
SCREW-PAN-CROS (Ref # 220A)	220B0540	1
WASHER PLAIN (Ref # 410)	410F0600	1
PIN,SNAP (Ref # 554)	554A0800	2