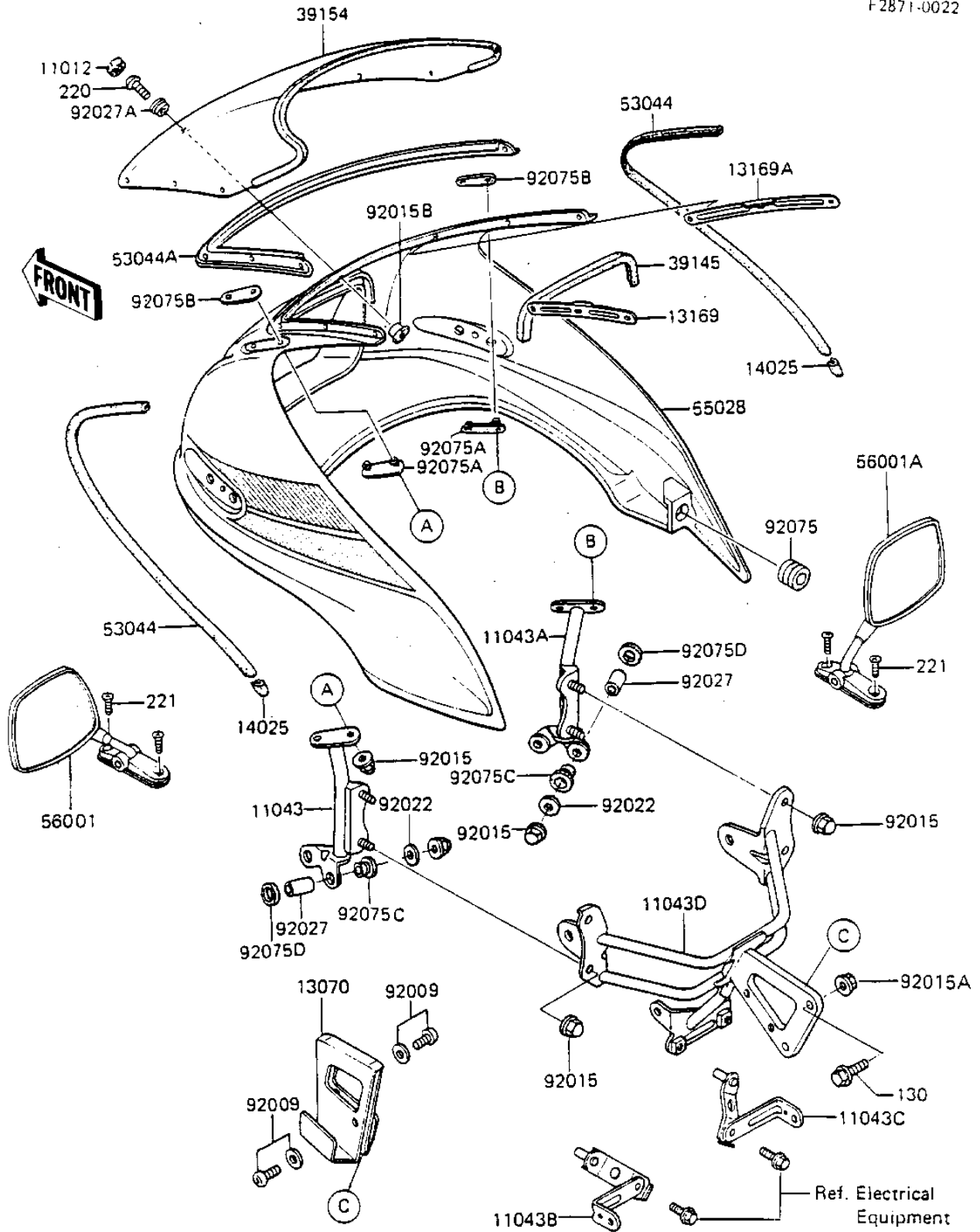


1984 GPz 750 PARTS DIAGRAM

FAIRING (ZX750-A1)

F2871-0022



1984 GPz 750 PARTS LIST

FAIRING (ZX750-A1)

ITEM NAME	PART NUMBER	QUANTITY
CAP,COWLING (Ref # 11012)	11012-1309	7
BRACKET-B,MIRROR,LH (Ref # 11043)	11043-1069	1
BRACKET-B,MIRROR,RH (Ref # 11043A)	11043-1070	1
BRACKET-B,COWLING,RR, (Ref # 11043B)	11043-1130	1
BRACKET-B,COWLING,RR, (Ref # 11043C)	11043-1131	1
BRACKET-B,COWLING BOD (Ref # 11043D)	11043-1252	1
GUIDE,HARNESS&CABLE (Ref # 13070)	13070-1101	1
PLATE,COWLING,LH (Ref # 13169)	13169-1711	1
PLATE,COWLING,LH (Ref # 13169A)	13169-1711	1
COVER,WINDSHIELD END (Ref # 14025)	14025-1756	2
TRIM-SEAL,HEAD LAMP (Ref # 39145)	39145-1051	1
WINDSHIELD (Ref # 39154)	39154-1014	1
TRIM,COWLING (Ref # 53044)	53044-1110	1
TRIM,WINDSHIELD (Ref # 53044A)	53044-1122	1
COWLING (Ref # 55028)	55028-5062-B1	1
MIRROR-ASSY,LH (Ref # 56001)	56001-1142	1
MIRROR-ASSY,RH (Ref # 56001A)	56001-1145	1
SCREW,6X10 (Ref # 92009)	92009-1270	2
NUT,CAP 6MM,BLACK (Ref # 92015)	92015-1170	12
NUT,FLANGED,8MM (Ref # 92015A)	92015-1408	2
NUT,FLANGED,5MM (Ref # 92015B)	92015-1306	7
WASHER,PLAIN,7MM (Ref # 92022)	92022-228	4
COLLAR,6.8X10X21 (Ref # 92027)	92027-1400	4
COLLAR,COWLING,ID=5.5 (Ref # 92027A)	92027-1596	7
DAMPER RUBBER (Ref # 92075)	92075-1037	2
DAMPER,MIRROR (Ref # 92075A)	92075-1492	2
DAMPER,MIRROR (Ref # 92075B)	92075-1500	2
RUBBER,FENDER COVER (Ref # 92075C)	92075-174	4
DAMPER RUBBER (Ref # 92075D)	92075-175	4

1984 GPz 750 PARTS LIST

FAIRING (ZX750-A1)

ITEM NAME	PART NUMBER	QUANTITY
BOLT-FLANGED,8X25 (Ref # 130)	130C0825	2
SCREW-PAN-CROSS,5X14 (Ref # 220)	220C0514	7
SCREW-CSK-CROS,6X25,B (Ref # 221)	221C0625	4