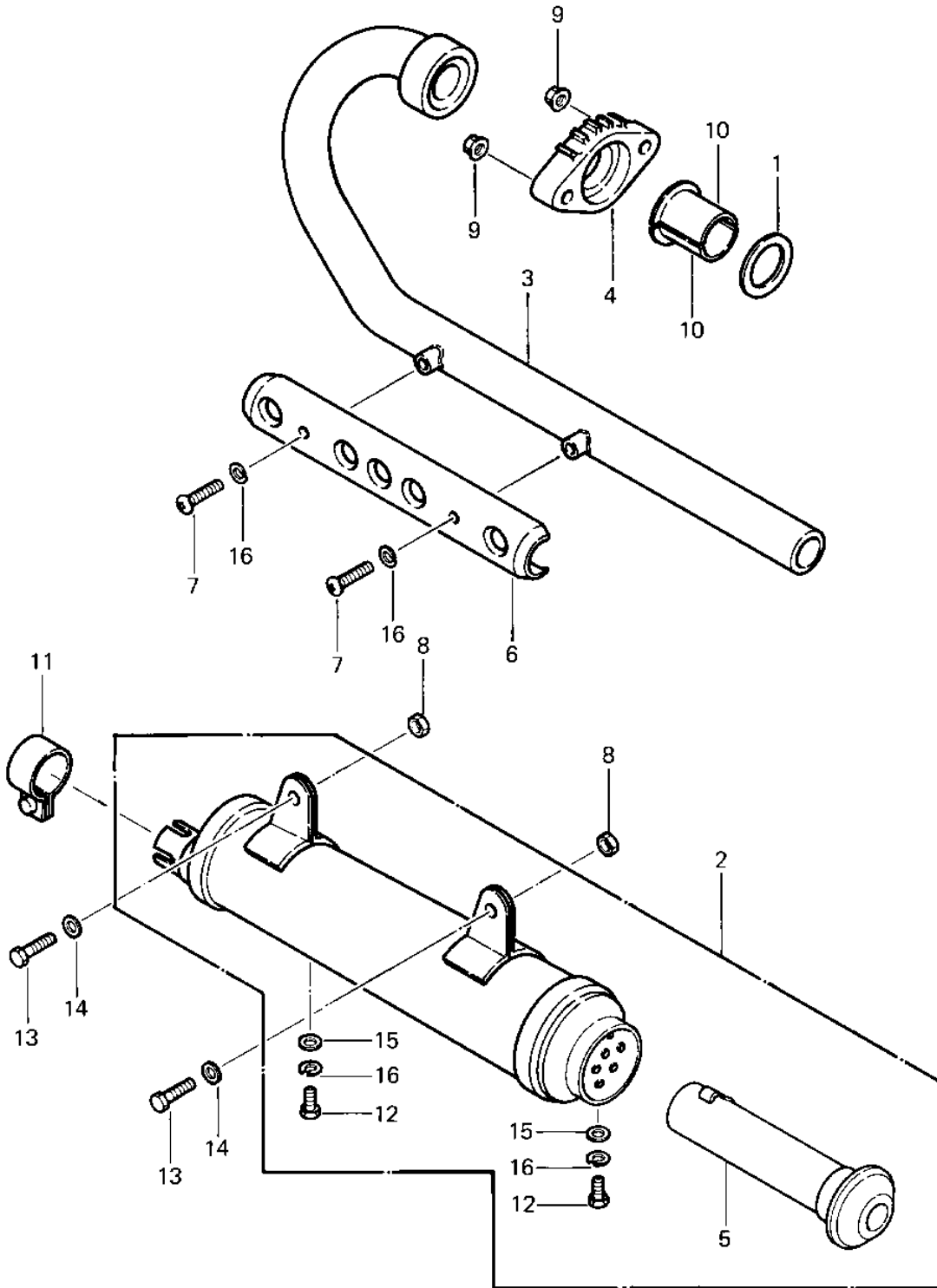


1983 Prairie PARTS DIAGRAM

MUFFLER ('83 C1)



1983 Prairie PARTS LIST

MUFFLER ('83 C1)

| ITEM NAME | PART NUMBER | QUANTITY |
|----------------------------------|-------------|----------|
| GASKET,EXHAUST PIPE H (Ref # 1) | 11009-1866 | 1 |
| MUFFLER (Ref # 2) | 18001-1452 | 1 |
| MUFFLER (Ref # 2) | 18001-1452 | 1 |
| PIPE-EXHAUST (Ref # 3) | 18049-1153 | 1 |
| HOLDER EXHAUST PIPE (Ref # 4) | 18069-1014 | 1 |
| BAFFLE-PIPE MUFFLER (Ref # 5) | 49099-1223 | 1 |
| COVER-EXHAUST PIPE,BL (Ref # 6) | 49107-1004 | 1 |
| SCREW (Ref # 7) | 92009-1054 | 2 |
| NUT,LOCK,8MM (Ref # 8) | 92015-1124 | 2 |
| NUT-8MM (Ref # 9) | 92015-1143 | 2 |
| COLLAR,EXHAUST PIPE (Ref # 10) | 92027-264 | 2 |
| CLAMP,MUFFLER CONNECT (Ref # 11) | 92037-1115 | 1 |
| BOLT-UPSET,6X12 (Ref # 12) | 112G0612 | 2 |
| BOLT,8X20 (Ref # 13) | 115G0820 | 2 |
| WASHER PLAIN 8MM (Ref # 14) | 410B0800 | 2 |
| WASHER PLAIN 6MM (Ref # 15) | 411B0600 | 2 |
| WASHER SPRING 6MM (Ref # 16) | 461F0600 | 4 |