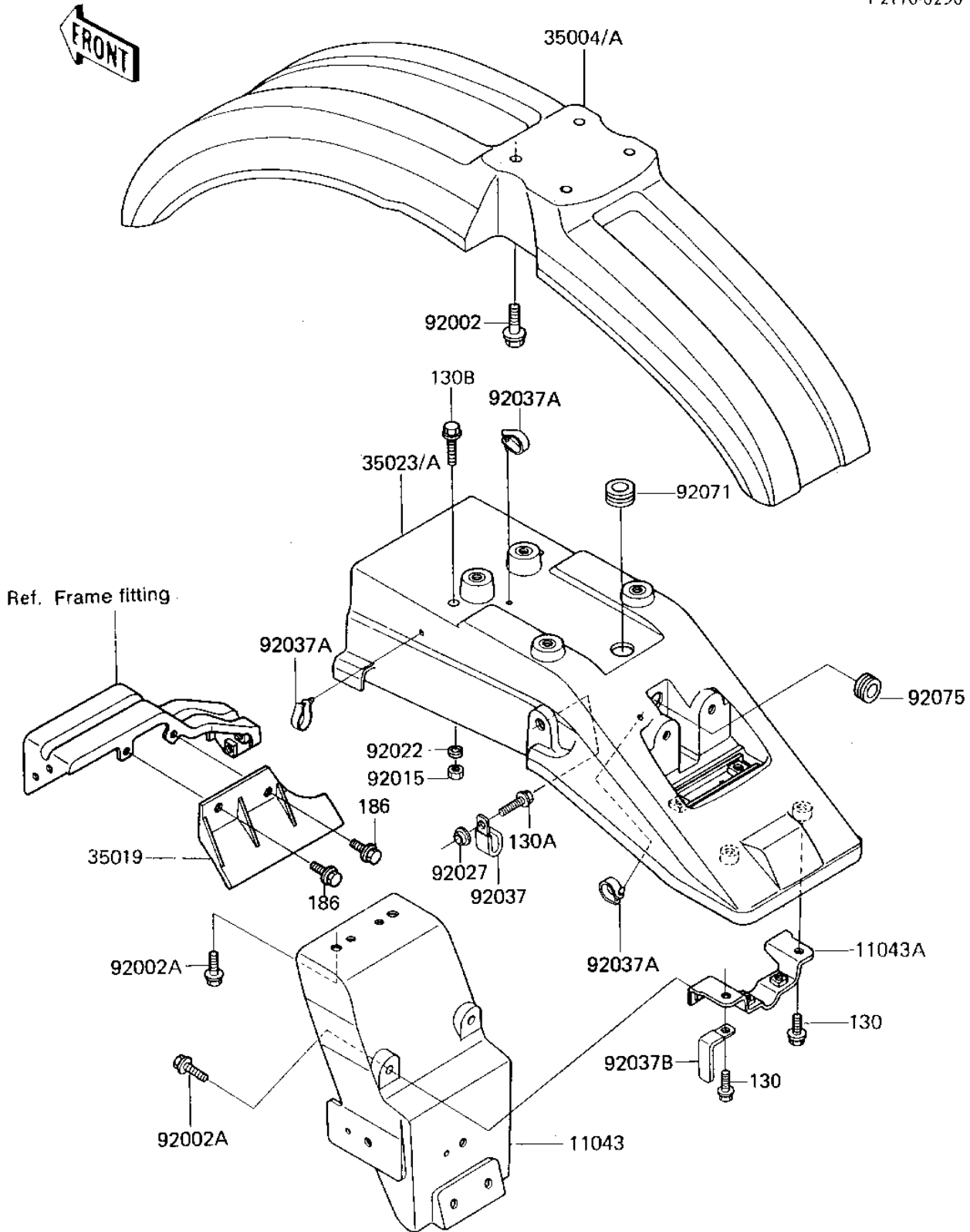


1985 KL600 PARTS DIAGRAM

FENDERS

F2170-0290



1985 KL600 PARTS LIST

FENDERS

ITEM NAME	PART NUMBER	QUANTITY
BRACKET,LICENSE PLATE (Ref # 11043)	11043-1166	1
BRACKET,REAR FLAP (Ref # 11043A)	11043-1326	1
FENDER-FRONT,P.WHITE (Ref # 35004)	35004-1153-6F	1
FENDER-FRONT,L.GREEN (Canada) (Ref # 35004A)	35004-1153-6W	1
FLAP (Ref # 35019)	35019-1131	1
FENDER-REAR,RR,P.WHIT (Ref # 35023)	35023-1101-6F	1
FENDER-REAR,RR,L.GREE (Canada) (Ref # 35023A)	35023-1101-6W	1
BOLT,6X16 (Ref # 92002)	92001-1950	4
BOLT,6X16 (Ref # 92002A)	92002-1136	4
NUT,FLANGED,6MM (Ref # 92015)	92015-1367	2
WASHER 6.5X20X1.6T (Ref # 92022)	92022-125	2
COLLAR (Ref # 92027)	92027-1794	2
CLAMP,WIRING HARNESS (Ref # 92037)	92037-1069	1
CLAMP (Ref # 92037A)	92037-1163	3
CLAMP (Ref # 92037B)	92037-1680	1
GROMMET (Ref # 92071)	92071-1027	1
DAMPER RUBBER (Ref # 92075)	92075-1028	1
BOLT-FLANGED (Ref # 130)	130D0608	2
BOLT-FLANGED (Ref # 130A)	130D0616	2
BOLT-FLANGED (Ref # 130B)	130D0620	2
BOLT-UPSET-WP (Ref # 186)	186D0612	2