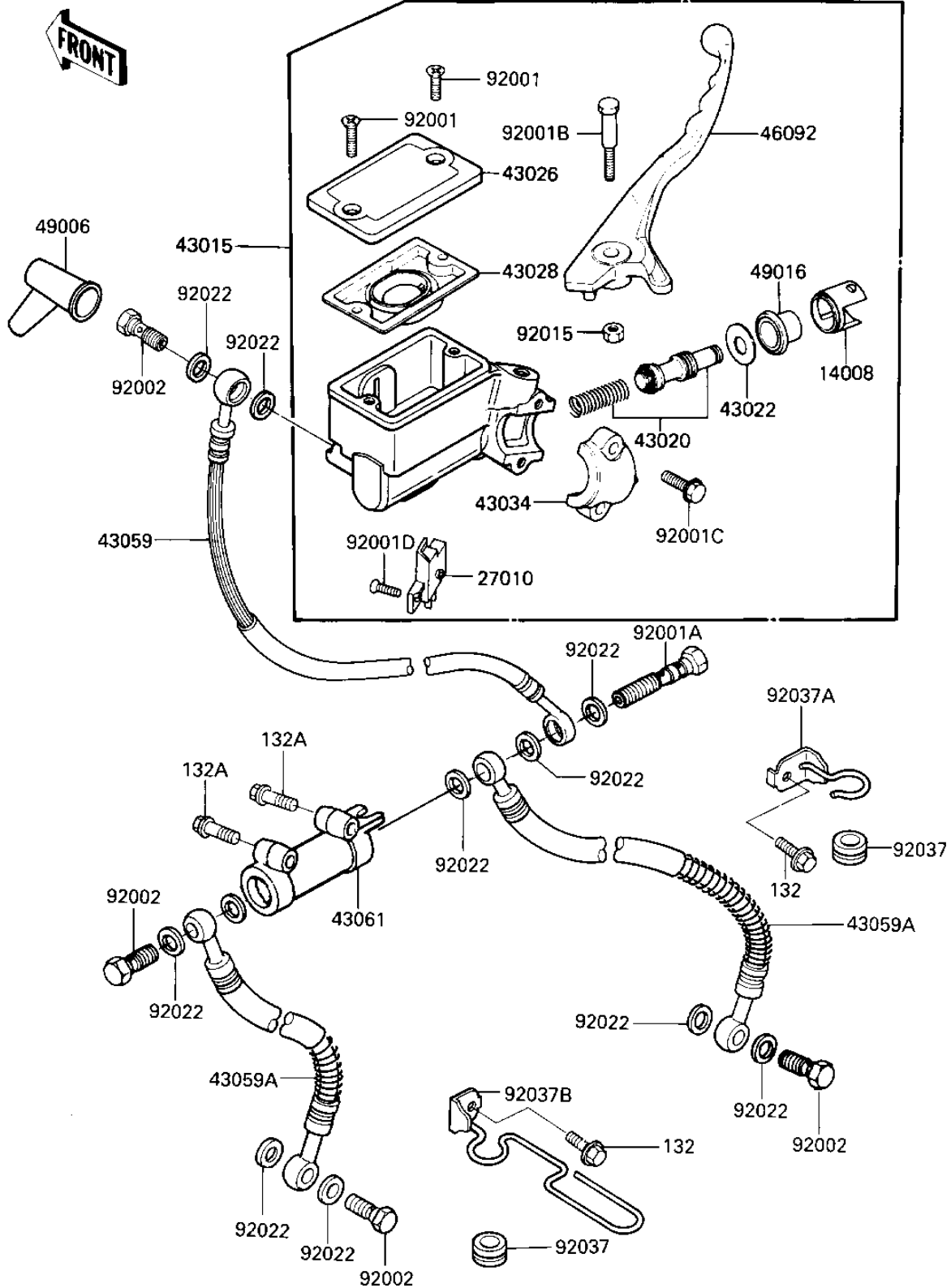


1985 LTD PARTS DIAGRAM

FRONT MASTER CYLINDER

F2291-0153



1985 LTD PARTS LIST

FRONT MASTER CYLINDER

ITEM NAME	PART NUMBER	QUANTITY
LINER,PISTON (Ref # 14008)	14008-1035	1
SWITCH,BRAKE (Ref # 27010)	27010-1056	1
CYLINDER-ASSY-MASTER, (Ref # 43015)	43015-1283	1
PISTON-COMP-BRAKE (Ref # 43020)	43020-1079	1
STOPPER-BRAKE,PISTON (Ref # 43022)	43022-1009	1
CAP-BRAKE (Ref # 43026)	43026-1056	1
DIAPHRAGM,MASTER CYL1 (Ref # 43028)	43028-1029	1
HOLDER,MASTER CYLINDR (Ref # 43034)	43034-1001	1
HOSE-BRAKE (Ref # 43059)	43059-1293	1
HOSE-BRAKE (Ref # 43059A)	43059-1310	2
JOINT,FR BRAKE HOSE (Ref # 43061)	43061-1002	1
LEVER-GRIP,FRONT BRAK (Ref # 46092)	46092-1027	1
BOOT,DUST (Ref # 49006)	49006-1041	1
COVER-SEAL,BRK PISTON (Ref # 49016)	49016-1041	1
SCREW,COUNTERSUNK HED (Ref # 92001)	92001-1055	2
BOLT (Ref # 92001A)	92002-1909	1
BOLT,6X37.3,BLACK (Ref # 92001B)	92001-1512	1
BOLT,W/WASHER,6X25,BL (Ref # 92001C)	92001-1513	2
SCREW-COUNTERSUNK (Ref # 92001D)	92001-1532	1
BOLT,OIL,L=23 (Ref # 92002)	92002-1888	4
NUT,LOCK,6MM,BLACK (Ref # 92015)	92015-1191	1
WASHER-OIL BOLT (Ref # 92022)	43067-001	11
DAMPER RUBBER,CYL HSE (Ref # 92037)	43064-006	2
CLAMP (Ref # 92037A)	92037-1218	1
CLAMP,BRAKE HOSE,LH (Ref # 92037B)	92037-1308	1
BOLT-FLANGED-SMALL (Ref # 132)	132E0612	2
BOLT-FLANGED-SMALL (Ref # 132A)	132G0635	2