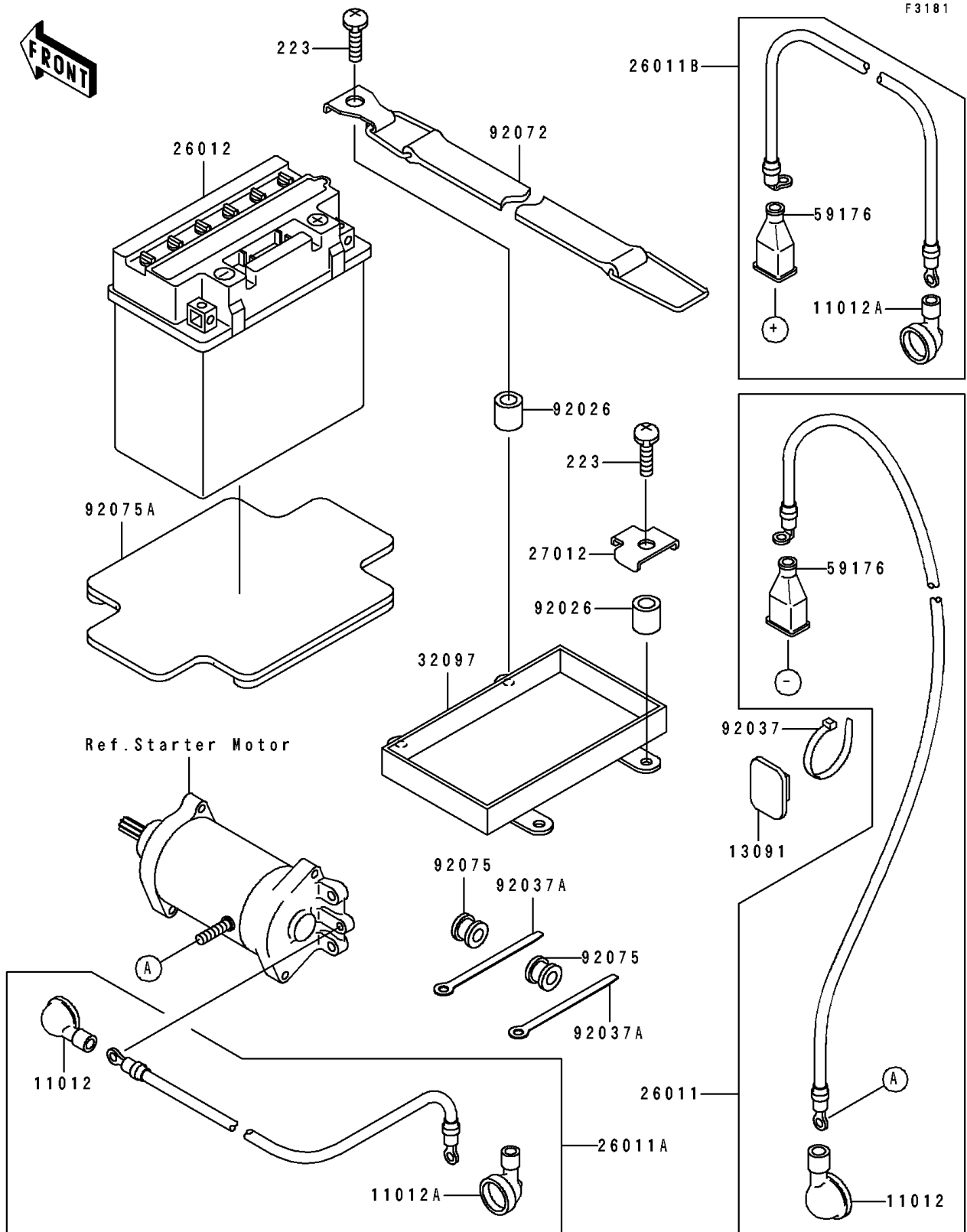


# 1994 XiR PARTS DIAGRAM

Electrical Equipment



## 1994 XiR PARTS LIST

### Electrical Equipment

| ITEM NAME                               | PART NUMBER | QUANTITY |
|---|-------------|----------|
| CAP (Ref # 11012)                       | 11012-3004  | 2        |
| CAP,LEAD WIRE (Ref # 11012A)            | 11012-3726  | 2        |
| HOLDER,BAND (Ref # 13091)               | 13091-3764  | 1        |
| WIRE-LEAD,STARTER-BATTERY (Ref # 26011) | 26011-3796  | 1        |
| WIRE-LEAD,RELAY-STARTER (Ref # 26011A)  | 26011-3797  | 1        |
| WIRE-LEAD,RELAY-BATTERY (Ref # 26011B)  | 26011-3813  | 1        |
| BATTERY,YB16CL-B,12V 19AH (Ref # 26012) | 26012-3720  | 1        |
| HOOK (Ref # 27012)                      | 27012-3751  | 2        |
| CASE-BATTERY (Ref # 32097)              | 32097-3704  | 1        |
| CAP.,TERMINAL (Ref # 59176)             | 59176-501   | 2        |
| SPACER (Ref # 92026)                    | 92026-3722  | 4        |
| CLAMP (Ref # 92037)                     | 92037-1173  | 1        |
| CLAMP,L=100 (Ref # 92037A)              | 92037-3736  | 2        |
| BAND,BATTERY (Ref # 92072)              | 92072-3748  | 2        |
| DAMPER (Ref # 92075)                    | 92075-1650  | 2        |
| DAMPER,BATTERY (Ref # 92075A)           | 92075-3714  | 1        |
| SCREW-PAN-WS-CROS,6X25 (Ref # 223)      | 223R0625    | 4        |