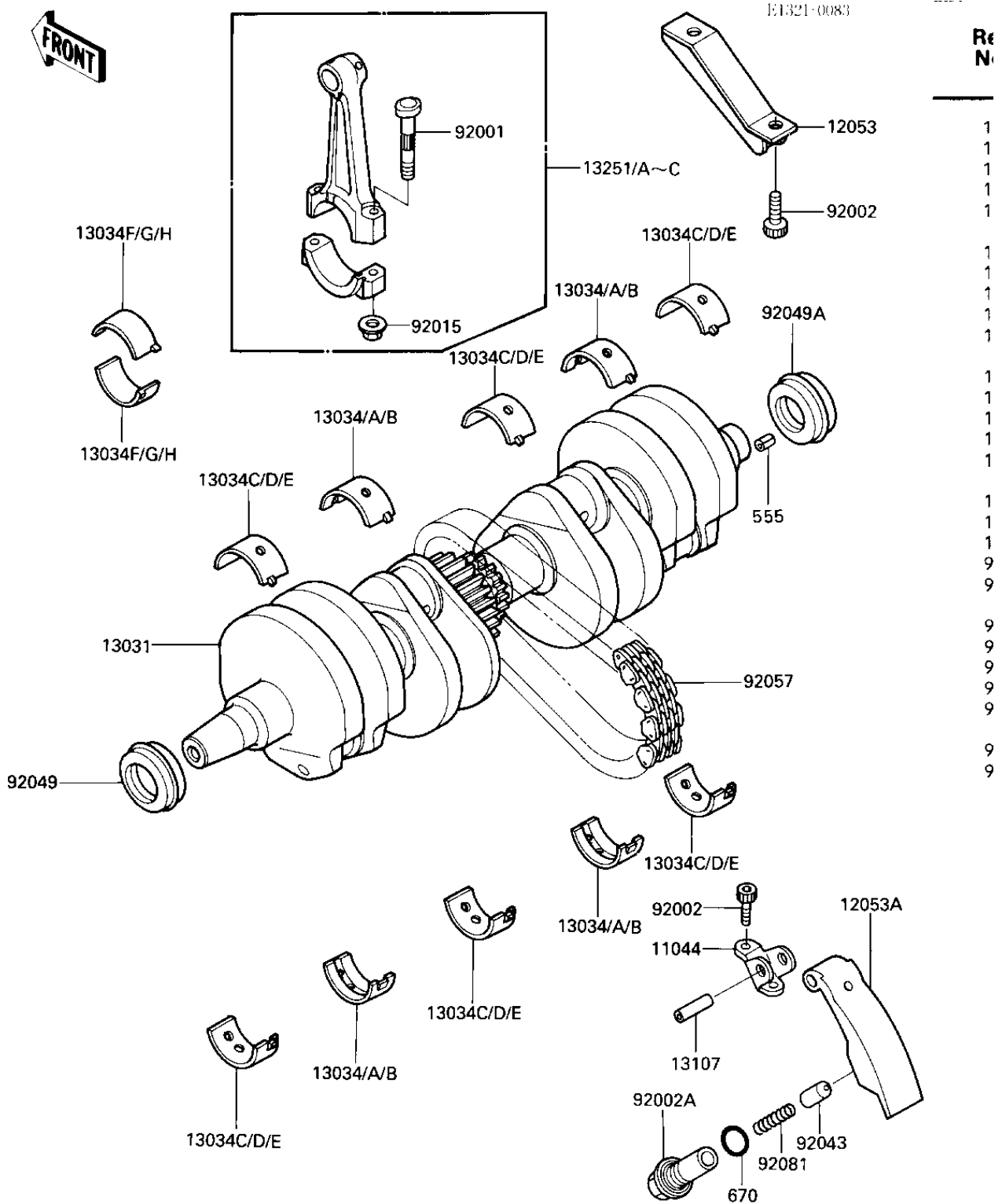


1986 Ninja® 600 PARTS DIAGRAM

CRANKSHAFT



Ref. No.
1
1
1
1
1
1
1
1
1
1
1
1
1
1
1
1
9
9
9
9
9
9
9
9

1986 Ninja® 600 PARTS LIST

CRANKSHAFT

ITEM NAME	PART NUMBER	QUANTITY
BRACKET,CHAIN GUIDE (Ref # 11044)	11044-1075	1
GUIDE-CHAIN,UPP (Ref # 12053)	12053-1156	1
GUIDE-CHAIN,LWR (Ref # 12053A)	12053-1157	1
CRANKSHAFT-COMP (Ref # 13031)	13031-1191	1
METAL,BRG,"BROWN"MARK (Ref # 13034)	13034-1016	1
METAL,BRG"BLACK"MARK (Ref # 13034A)	13034-1017	AR
METAL,BRG,"BLUE"MARK (Ref # 13034B)	13034-1018	AR
BUSHING,CRANKSHAFT,BL (Ref # 13034C)	13034-1064	AR
BUSHING,CRANKSHAFT,BL (Ref # 13034D)	13034-1065	AR
BUSHING,CRANKSHAFT,BR (Ref # 13034E)	13034-1066	AR
BUSHING,CONNECTING RO (Ref # 13034F)	13034-1067	AR
BUSHING,CONNECTING RO (Ref # 13034G)	13034-1068	AR
BUSHING,CONNECTING RO (Ref # 13034H)	13034-1069	AR
SHAFT,L=24.5 (Ref # 13107)	13107-1142	1
ROD-ASSY-CONNECTING,J (Ref # 13251)	13251-1059-JJ	1
ROD-ASSY-CONNECTING,I (Ref # 13251A)	13251-1059-II	4
ROD-ASSY-CONNECTING,J (Ref # 13251B)	13251-1059-JJ	4
ROD-ASSY-CONNECTING,K (Ref # 13251C)	13251-1059-KK	4
BOLT,CONNECTING ROD,8 (Ref # 92001)	92001-1887	8
BOLT,SOCKET,6X14 (Ref # 92002)	92002-1192	4
BOLT (Ref # 92002A)	92002-1479	1
NUT,FLANGED,8MM (Ref # 92015)	92015-1311	8
PIN-NEUTRAL POSITION (Ref # 92043)	92043-076	1
OIL SEAL,HSCY 25X36X7 (Ref # 92049)	92049-1013	1
OIL SEAL,HSCY25397 (Ref # 92049A)	92050-081	1
CHAIN,#63-139X50L (Ref # 92057)	92057-1011	1
SPRING (Ref # 92081)	92081-112	1
PIN-SPRING,4X8 (Ref # 555)	555A0408	1
"O" RING,16MM (Ref # 670)	670B2016	1