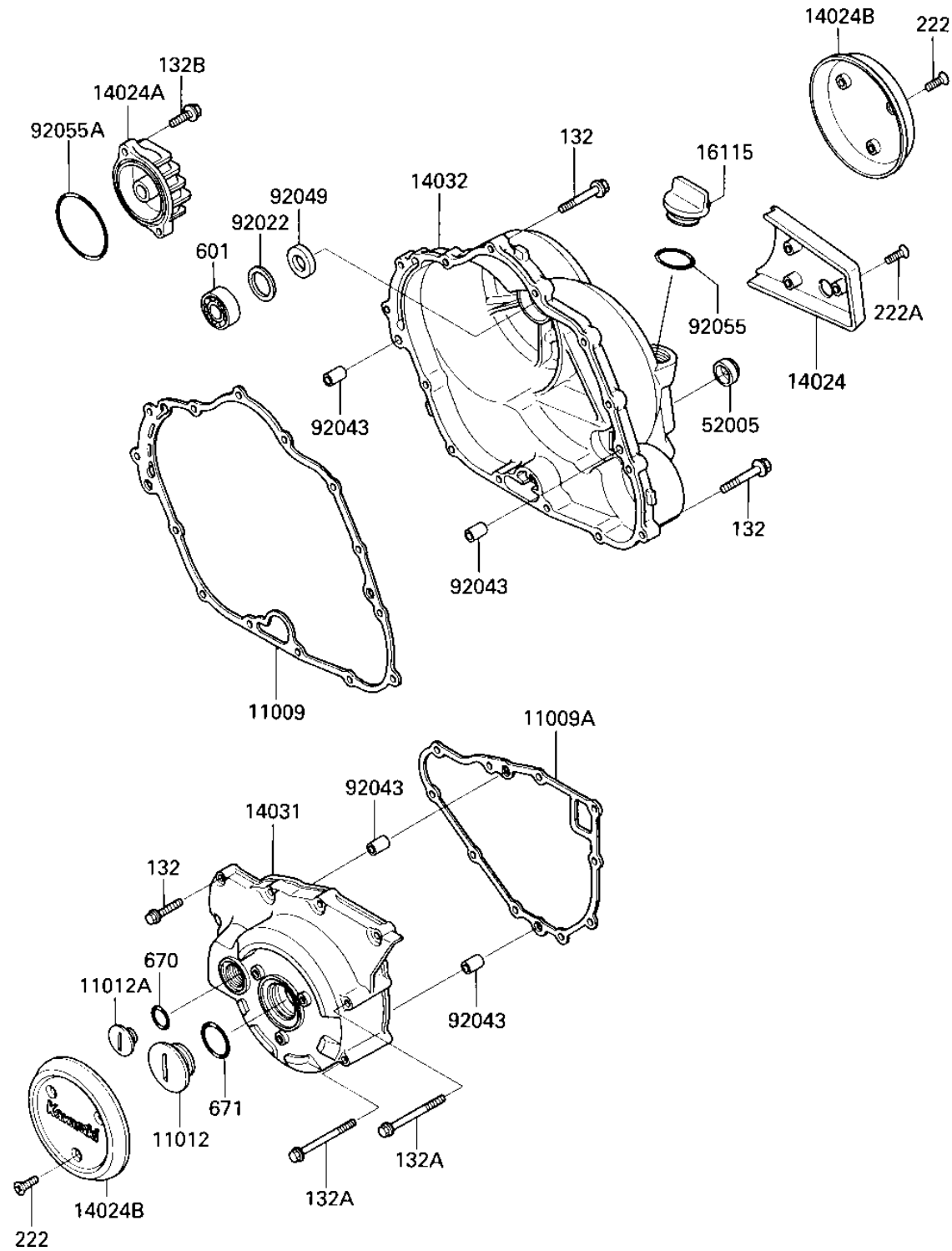


# 1986 Bayou 300 PARTS DIAGRAM

ENGINE COVERS

E1431-0177



# 1986 Bayou 300 PARTS LIST

## ENGINE COVERS

| ITEM NAME                            | PART NUMBER | QUANTITY |
|--------------------------------------|-------------|----------|
| GASKET,CLUTCH COVER (Ref # 11009)    | 11060-1225  | 1        |
| GASKET,GENERATOR COVE (Ref # 11009A) | 11060-1226  | 1        |
| CAP (Ref # 11012)                    | 11012-1362  | 1        |
| CAP,TOP MARK (Ref # 11012A)          | 11012-1363  | 1        |
| COVER,RELEASE ADJUSTE (Ref # 14024)  | 14024-1061  | 1        |
| COVER,OIL FILTER (Ref # 14024A)      | 14024-1062  | 1        |
| COVER,CLUTCH COVER (Ref # 14024B)    | 14025-1807  | 2        |
| COVER-GENERATOR (Ref # 14031)        | 14031-1181  | 1        |
| COVER-CLUTCH (Ref # 14032)           | 14032-1197  | 1        |
| CAP-OIL FILLER (Ref # 16115)         | 16115-1009  | 1        |
| GAUGE,OIL LEVEL (Ref # 52005)        | 52005-1009  | 1        |
| WASHER,25.3X33X1.0 (Ref # 92022)     | 92022-1109  | 1        |
| PIN,DOWEL,6.2X8X14 (Ref # 92043)     | 92043-1263  | 4        |
| SEAL-OIL,SCY 15X30X7 (Ref # 92049)   | 92049-1158  | 1        |
| "O" RING,31MM (Ref # 92055)          | 92055-049   | 1        |
| RING-O,63MM (Ref # 92055A)           | 92055-1294  | 1        |
| BOLT-FLANGED-SMALL (Ref # 132)       | 132J0630    | 22       |
| BOLT-FLANGED-SMALL (Ref # 132A)      | 132J0670    | 2        |
| BOLT-FLANGED-SMALL (Ref # 132B)      | 132Y0625    | 2        |
| SCREW-CSK-RD-CROS (Ref # 222)        | 222C0510    | 6        |
| SCREW-CSK-RD-CROS (Ref # 222A)       | 222C0518    | 3        |
| BEARING BALL #6202 (Ref # 601)       | 601B6202    | 1        |
| "O" RING,18MM (Ref # 670)            | 670B2018    | 1        |
| "O" RING,40MM (Ref # 671)            | 671B2540    | 1        |