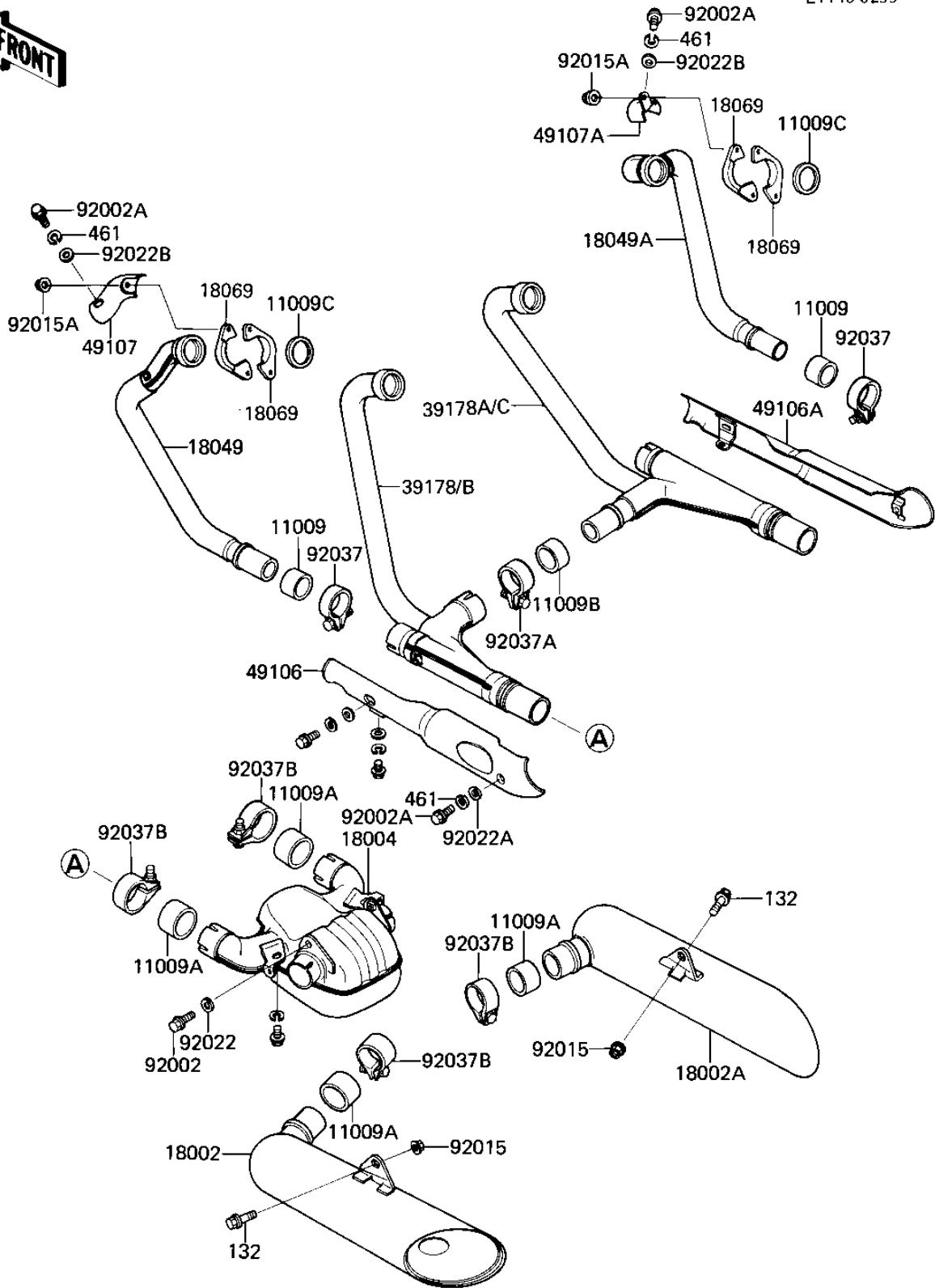


# 1985 Eliminator PARTS DIAGRAM

MUFFLERS

E1140-0233



# 1985 Eliminator PARTS LIST

## MUFFLERS

ITEM NAME	PART NUMBER	QUANTITY
GASKET,EXHAUST PIPE C (Ref # 11009)	11009-1667	2
GASKET,EXHAUST PIPE C (Ref # 11009A)	11009-1666	4
GASKET,EXHAUST MANUFO (Ref # 11009B)	11009-1668	1
GASKET,EXHAUST PIPE H (Ref # 11009C)	11009-1840	4
BODY-COMP-MUFFLER,LH (Ref # 18002)	18002-1592	1
BODY-COMP-MUFFLER,RH (Ref # 18002A)	18002-1593	1
CHAMBER-PREMUFFLER (Ref # 18004)	18004-1052	1
PIPE-EXHAUST,#1 (Ref # 18049)	18049-1409	1
PIPE-EXHAUST,#4 (Ref # 18049A)	18049-1410	1
HOLDER-EXHAUST PIPE (Ref # 18069)	18069-1054	8
MANIFOLD-COMP-EXHAUST (Ref # 39178)	39178-1120	1
MANIFOLD-COMP-EXHAUST (Ref # 39178A)	39178-1099	1
COVER-MUFFLER,LH (Ref # 49106)	49106-1067	1
COVER-MUFFLER,RH (Ref # 49106A)	49106-1068	1
COVER-EXHAUST PIPE,LH (Ref # 49107)	49107-1066	1
COVER-EXHAUST PIPE,RH (Ref # 49107A)	49107-1067	1
BOLT,8X14 (Ref # 92002)	92002-1589	4
BOLT (Ref # 92002A)	92002-1608	8
NUT,8M/M (Ref # 92015)	92015-1014	2
NUT,FLANGED,8MM (Ref # 92015A)	92015-1397	8
WASHER,8.5X20X1.6,BLA (Ref # 92022)	92022-1317	4
WASHER (Ref # 92022A)	92022-1716	6
WASHER-PLAIN (Ref # 92022B)	92022-193	2
CLAMP,42MM (Ref # 92037)	92037-1349	2
CLAMP,MUFFLER (Ref # 92037A)	92037-1536	1
CLAMP,POWER CHAMBER (Ref # 92037B)	92037-1537	4
BOLT-FLANGED-SMALL (Ref # 132)	132E0835	2
WASHER-SPRING,6MM (Ref # 461)	461S0600	8