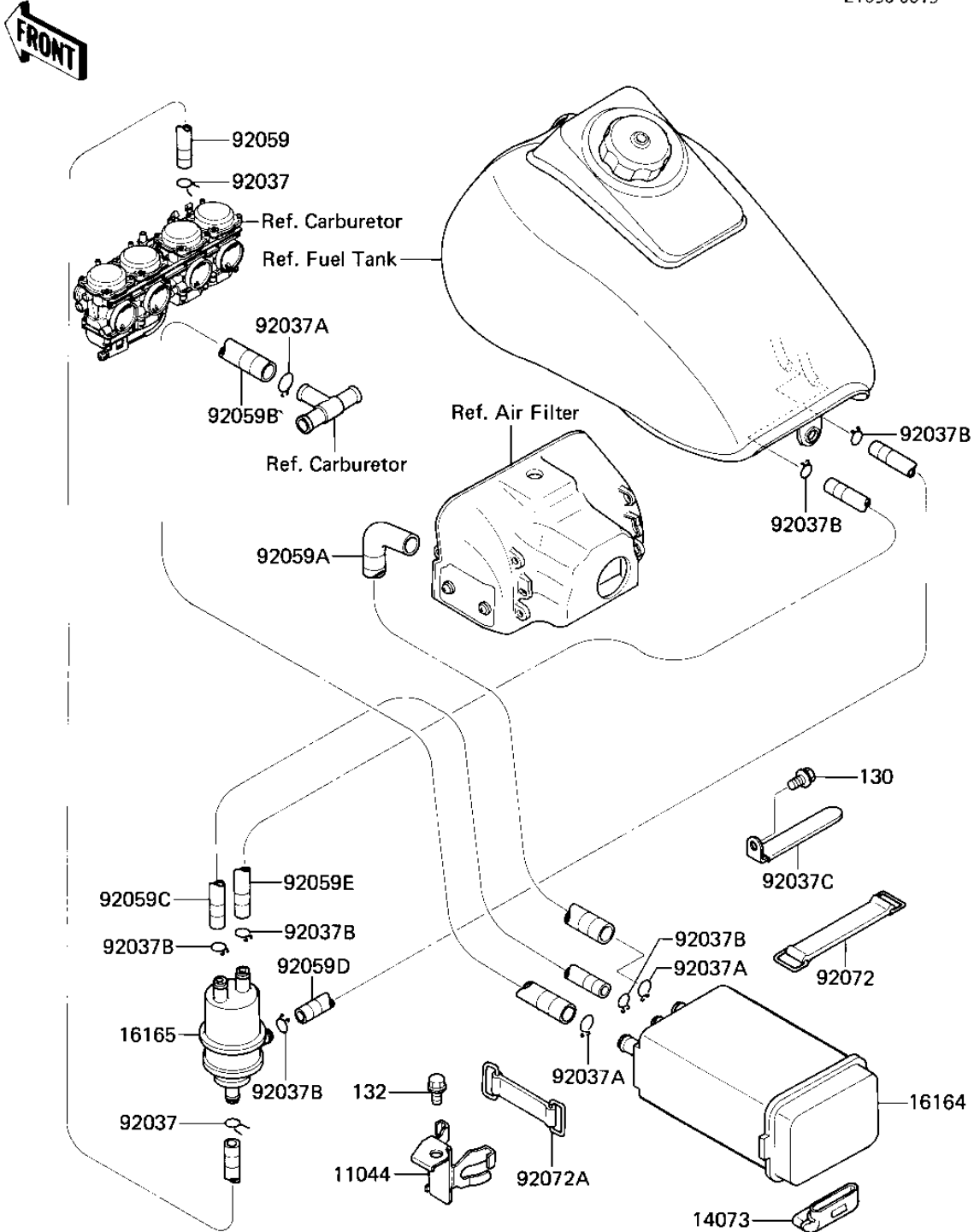


1986 Eliminator PARTS DIAGRAM

CANISTER

E1650-0015



1986 Eliminator PARTS LIST

CANISTER

ITEM NAME	PART NUMBER	QUANTITY
BRACKET,SEPARATOR (Ref # 11044)	11044-1333	1
DUCT,CANISTER (Ref # 14073)	14073-1178	1
CANISTER (Ref # 16164)	16164-1052	1
SEPARATOR (Ref # 16165)	16165-1001	1
CLAMP-PIPE (Ref # 92037)	92037-072	2
CLAMP-HOSE (Ref # 92037A)	92037-1104	3
CLAMP,CHAIN OILER (Ref # 92037B)	92037-147	6
CLAMP (Ref # 92037C)	92037-1679	1
TUBE,4X9X640,WHITE (Ref # 92059)	92059-1574	1
TUBE,7X12X553,GREEN (Ref # 92059A)	92059-1575	1
TUBE,7X12X520,YELLOW (Ref # 92059B)	92059-1576	1
TUBE,5X10X140,BLUE (Ref # 92059C)	92059-1577	1
TUBE,5X10X550,RED (Ref # 92059D)	92059-1650	1
TUBE,5X10X530,BLUE (Ref # 92059E)	92059-1651	1
BAND-SPARK PLUG COVER (Ref # 92072)	92072-053	1
BAND,TOOL (Ref # 92072A)	92072-066	1
BOLT-FLANGED (Ref # 130)	130E0608	1
BOLT-FLANGED-SMALL (Ref # 132)	132J0608	1