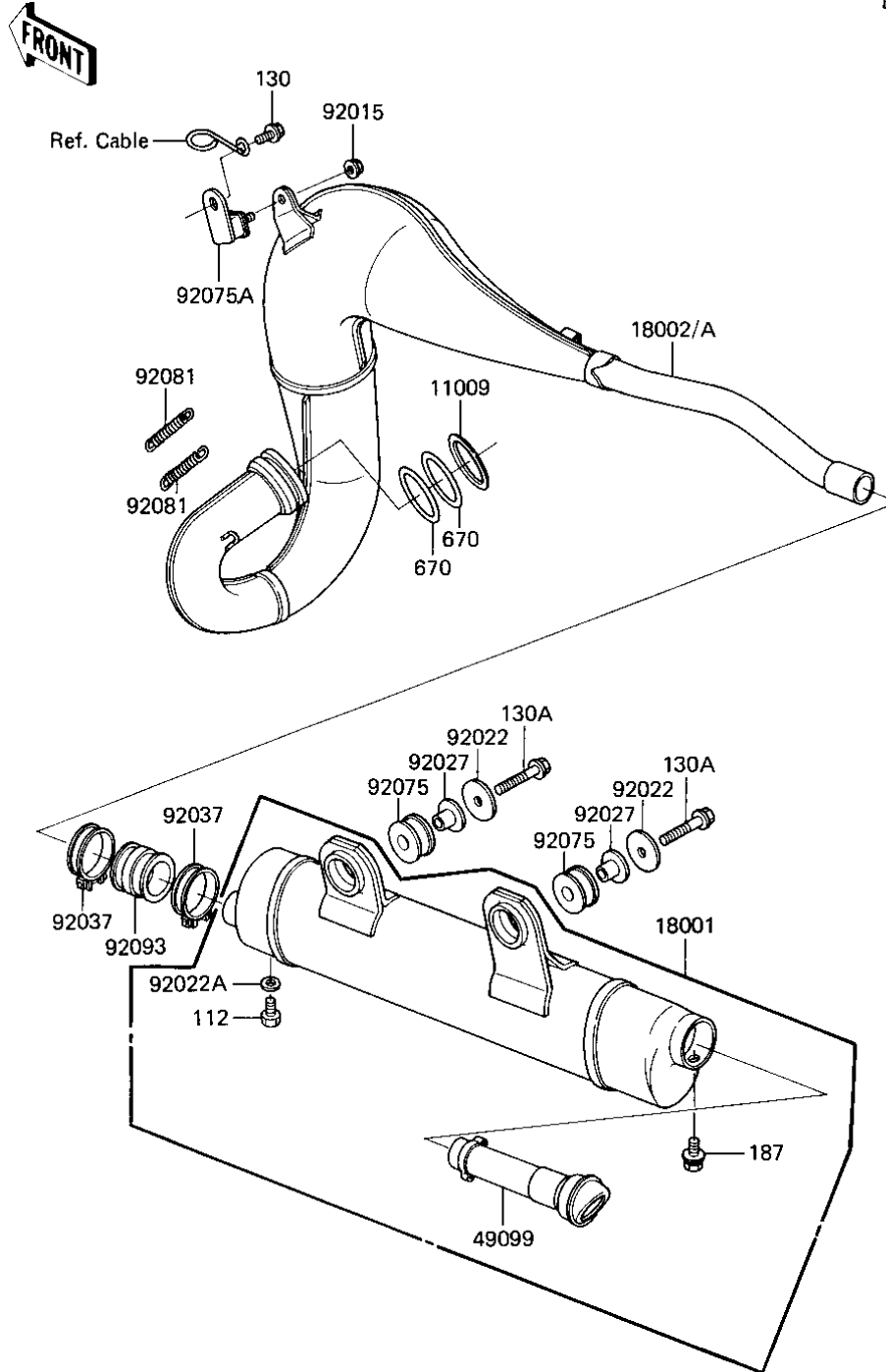


1985 KDX200 PARTS DIAGRAM

MUFFLER (KDX200-A2/A3)

E1140-0217



1985 KDX200 PARTS LIST

MUFFLER (KDX200-A2/A3)

ITEM NAME	PART NUMBER	QUANTITY
GASKET,EXHAUST HOLDER (Ref # 11009)	11009-1123	1
MUFFLER (Ref # 18001)	18001-1483	1
BODY-COMP-MUFFLER (Ref # 18002A)	18002-1558	1
BAFFLE-PIPE MUFFLER (Ref # 49099)	49099-1221	1
NUT-6MM (Ref # 92015)	92015-1078	1
WASHER,PLAIN (Ref # 92022)	92022-298	2
WASHER,PLAIN (Ref # 92022A)	92022-304	1
COLLAR (Ref # 92027)	92027-1081	2
CLAMP,MUFFLER (Ref # 92037)	92037-177	2
DAMPER,MUFFLER (Ref # 92075)	92075-1196	2
DAMPER,MUFFLER (Ref # 92075A)	92075-1891	1
SPRING,MUFFLER CONECT (Ref # 92081)	92081-1526	2
DUST SHIELD,MUFFLER (Ref # 92093)	92093-1014	1
BOLT-UPSET,6X8 (Ref # 112)	112B0608	1
BOLT,FLANGED,6X12 (Ref # 130)	130G0612	1
BOLT,FLANGED,8X30 (Ref # 130A)	130G0830	2
BOLT 6X12 (Ref # 187)	187B0612	1
"O" RING,45M/M (Ref # 670)	670E3045	2