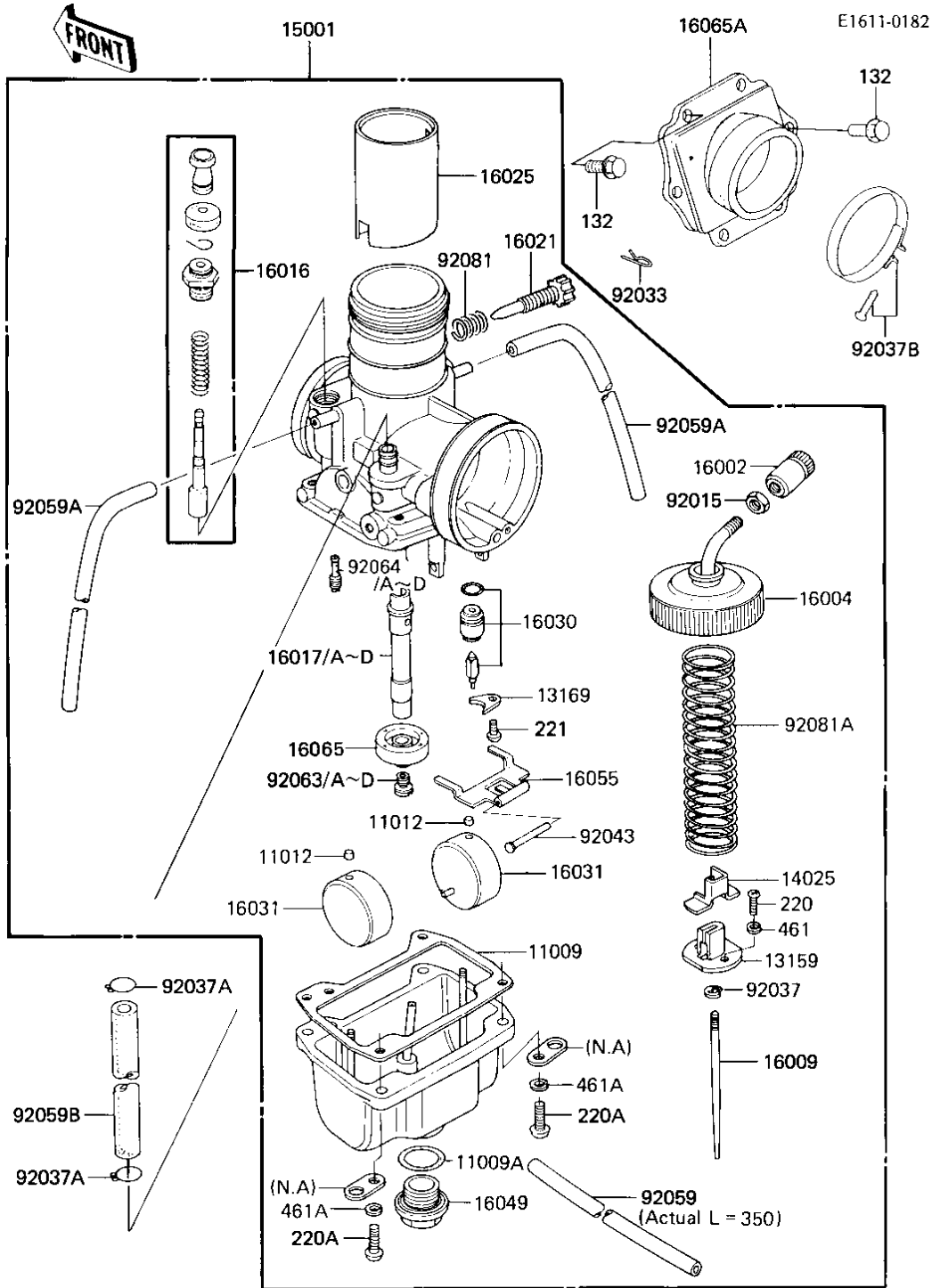


1985 KDX200 PARTS DIAGRAM

CARBURETOR (KDX200-A3)



K

1985 KDX200 PARTS LIST

CARBURETOR (KDX200-A3)

ITEM NAME	PART NUMBER	QUANTITY
GASKET,FLOAT CHAMBER (Ref # 11009)	11009-1275	1
GASKET-COVER (Ref # 11009A)	16038-009	1
CAP,FLOAT (Ref # 11012)	11012-1047	2
CONNECTOR,THROTTLE (Ref # 13159)	13159-1010	1
PLATE,LOCK (Ref # 13169)	13169-1923	1
COVER,THROTTLE,VALVE (Ref # 14025)	14025-1113	1
CARBURETOR-ASSY (Ref # 15001)	15001-1120	1
ADJUSTER,CABLE (Ref # 16002)	16002-1006	1
CAP-CHAMBER,MIXING (Ref # 16004)	16004-1013	1
NEEDLE-JET,6FL51-4 (Ref # 16009)	16009-1245	1
PLUNGER ASSY,STARTER (Ref # 16016)	16016-1013	1
JET-NEEDLE,R-4 (Ref # 16017)	16017-1212	1
JET-NEEDLE,R-6 (Ref # 16017A)	16017-1213	1
JET-NEEDLE,R-0 (Ref # 16017B)	16017-1238	1
JET-NEEDLE,Q-8 (Ref # 16017C)	16017-1239	1
JET-NEEDLE,R-2 (Ref # 16017D)	16017-1250	1
SCREW,THROTTLE STOP (Ref # 16021)	16021-1034	1
VALVE-THROTTLE,CA.3.0 (Ref # 16025)	16025-1114	1
VALVE-FLOAT,3.3 (Ref # 16030)	16030-1020	1
FLOAT (Ref # 16031)	16031-029	2
COVER,MAIN JET (Ref # 16049)	16049-006	1
ARM,FLOAT (Ref # 16055)	16055-009	1
HOLDER,NEEDLE JET (Ref # 16065)	16065-1045	1
HOLDER-CARBURETOR (Ref # 16065A)	16065-1070	1
NUT CABLE ADJUST LOCK (Ref # 92015)	16003-004	1
CIRCLIP (Ref # 92033)	92036-018	1
CIRCLIP (Ref # 92037)	16008-010	1
CLAMP,CHAIN OILER (Ref # 92037A)	92037-147	2
CLAMP,CARBURETOR HOLD (Ref # 92037B)	92037-1484	1

1985 KDX200 PARTS LIST

CARBURETOR (KDX200-A3)

ITEM NAME	PART NUMBER	QUANTITY
PIN,FLOAT (Ref # 92043)	16032-008	1
TUBE,3.5X6.5X350 (Ref # 92059)	92059-1211	1
TUBE,4X7X400,OVERFLOW (Ref # 92059A)	92059-1292	2
TUBE,5.8X10.8X180 (Ref # 92059B)	92059-1443	1
JET-MAIN NO 260A (Ref # 92063)	92063-028	1
JET-MAIN NO 270A (Ref # 92063A)	92063-029	1
JET-MAIN NO 280A (Ref # 92063B)	92063-030	1
JET-MAIN NO 290A (Ref # 92063C)	92063-031	1
JET-MAIN NO 300A (Ref # 92063D)	92063-045	1
JET-PILOT NO 30 (Ref # 92064)	92064-022	1
JET-PILOT NO 35 (Ref # 92064A)	92064-023	1
JET-PILOT NO 40 (Ref # 92064B)	92064-024	1
JET-PILOT NO 45 (Ref # 92064C)	92064-044	1
JET-PILOT,#27.5 (Ref # 92064D)	92064-1033	1
SPRING,THRTL STP SCRW (Ref # 92081)	92081-1200	1
SPRING,THROTTLE VALVE (Ref # 92081A)	92081-1432	1
BOLT-FLANGED-SMALL (Ref # 132)	132G0620	6
SCREW PAN HEAD 3X8 (Ref # 220)	220B0308	2
SCREW PAN HEAD 5X18 (Ref # 220A)	220B0518	4
SCREW CNTSNK HD 4X8 (Ref # 221)	221B0408	1
WASHER SPRING 3MM (Ref # 461)	461F0300	2
WASHER SPRING 5MM (Ref # 461A)	461F0500	4