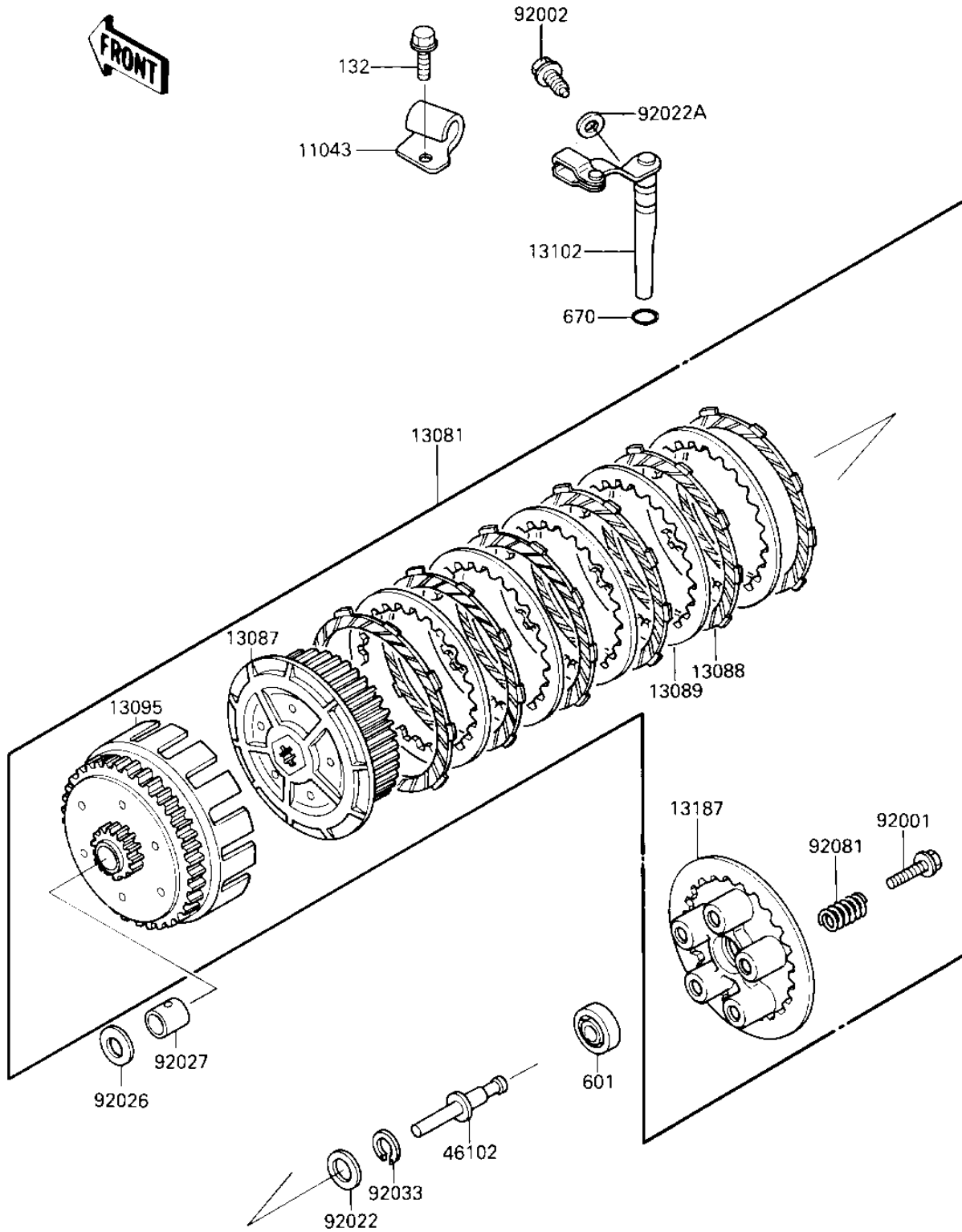


1985 KLR250 PARTS DIAGRAM

CLUTCH

E1350-0097



1985 KLR250 PARTS LIST

CLUTCH

| ITEM NAME | PART NUMBER | QUANTITY |
|-------------------------------------|-------------|----------|
| BRACKET (Ref # 11043) | 11043-1931 | 1 |
| CLUTCH-ASSY (Ref # 13081) | 13081-1243 | 1 |
| HUB-CLUTCH (Ref # 13087) | 13087-1063 | 1 |
| PLATE-FRICTION (Ref # 13088) | 13088-1057 | 6 |
| PLATE-CLUTCH (Ref # 13089) | 13089-1073 | 5 |
| HOUSING-COMP-CLUTCH (Ref # 13095) | 13095-1126 | 1 |
| RELEASE-COMP-CLUTCH (Ref # 13102) | 13102-1064 | 1 |
| PLATE-CLUTCH OPERATIN (Ref # 13187) | 13187-1059 | 1 |
| ROD,CLUTCH PUSH (Ref # 46102) | 46102-1033 | 1 |
| BOLT,CLUTCH SPRING,6X (Ref # 92001) | 92001-1576 | 5 |
| WASHER,16.3X29X1.75 (Ref # 92002) | 92022-1356 | 1 |
| WASHER THRUST (Ref # 92022) | 92022-112 | 1 |
| WASHER,PLAIN (Ref # 92022A) | 92022-304 | 1 |
| SPACER,20.1X34X4 (Ref # 92026) | 92026-1233 | 1 |
| COLLAR (Ref # 92027) | 92027-1808 | 1 |
| CIRCLIP,18MM (Ref # 92033) | 92033-029 | 1 |
| SPRING-CLUTCH (Ref # 92081) | 92081-083 | 5 |
| BOLT-FLANGED-SMALL (Ref # 132) | 132J0612 | 1 |
| BEARING-BALL (Ref # 601) | 92045-1235 | 1 |
| "O" RING,9MM (Ref # 670) | 670B1509 | 1 |