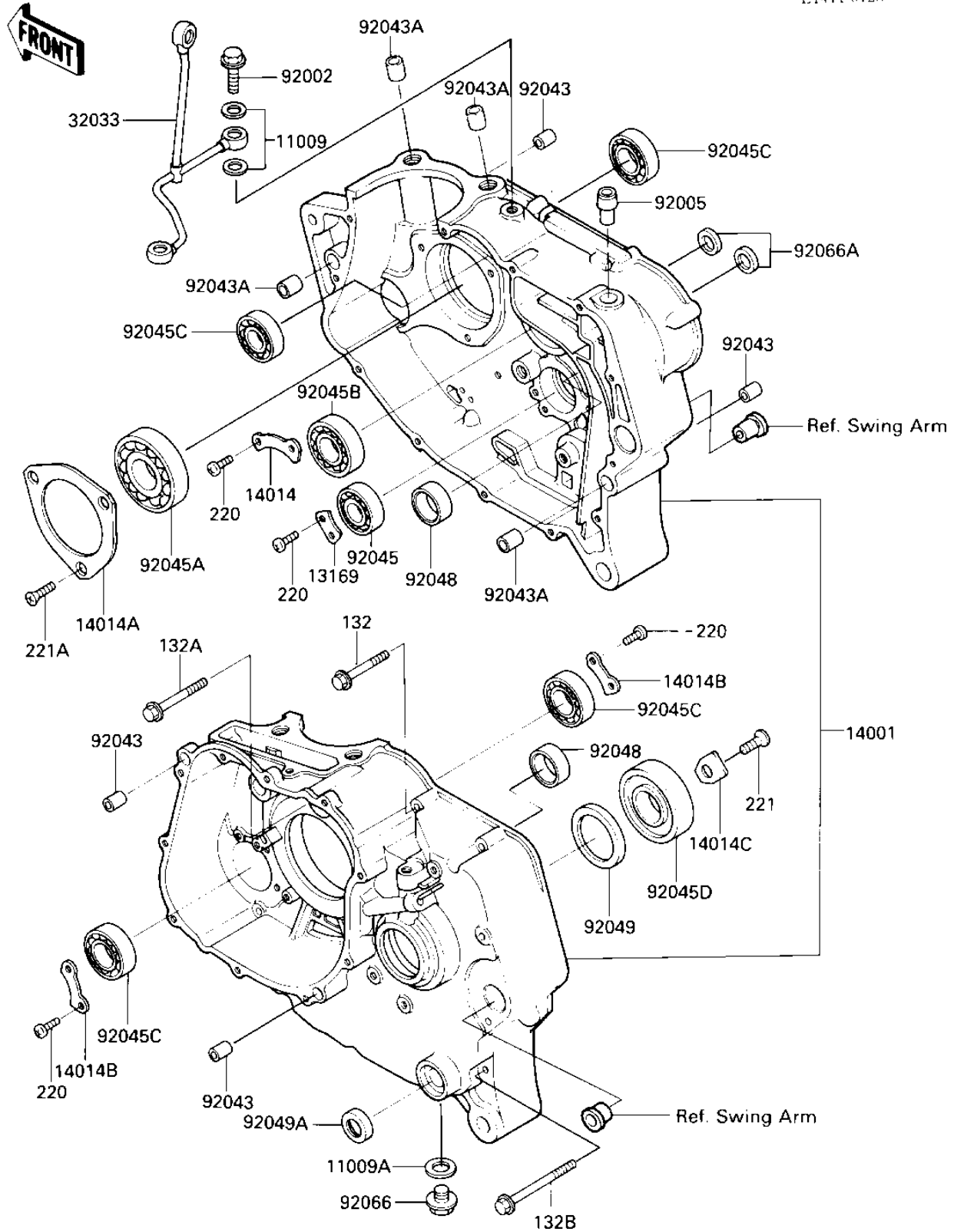


1985 KLR250 PARTS DIAGRAM

CRANKCASE

E1411-0123



1985 KLR250 PARTS LIST

CRANKCASE

ITEM NAME	PART NUMBER	QUANTITY
GASKET,10X14.5X1.5 (Ref # 11009)	11009-1105	4
GASKET,DRIN PLUG (Ref # 11009A)	92065-097	1
PLATE,GEAR CHANGE (Ref # 13169)	13169-014	1
SET-CRANKCASE (Ref # 14001)	14001-5180	1
PLATE,POSITIONING (Ref # 14014)	14014-037	1
PLATE,POSITIONING (Ref # 14014A)	14014-1004	1
PLATE-POSITION (Ref # 14014B)	14014-1014	2
PLATE-POSITION (Ref # 14014C)	14014-1057	1
PIPE (Ref # 32033)	32033-1427	1
BOLT,BANJO,10X25 (Ref # 92002)	92002-1170	2
BREATHER JOINT (Ref # 92005)	14067-006	1
PIN-DOWEL (Ref # 92043)	92042-007	4
PIN,10.1X12X14 (Ref # 92043A)	92043-4009	4
BEARING,BALL,#6905 (Ref # 92045)	92045-036	1
BEARING,BALL,#6306 (Ref # 92045A)	92045-037	1
BEARING-BALL (Ref # 92045B)	92045-1041	1
BEARING-BALL,6004TMB (Ref # 92045C)	92045-1118	4
BEARING-BALL (Ref # 92045D)	92045-1127	1
RACE,26X33X13 (Ref # 92048)	92048-1057	2
SEAL-OIL,TC32457 (Ref # 92049)	92049-1159	1
OIL SEAL,CHANGE SHAFT (Ref # 92049A)	92050-082	1
PLUG,OIL DRAIN,12X15 (Ref # 92066)	92066-1174	1
PLUG (Ref # 92066A)	92066-1282	2
BOLT-FLANGED-SMALL (Ref # 132)	132J0640	10
BOLT-FLANGED-SMALL (Ref # 132A)	132J0650	1
BOLT-FLANGED-SMALL (Ref # 132B)	132J0670	3
SCREW PAN HEAD 6X14 (Ref # 220)	220B0614	8
SCREW CNTSNK HD 6X12 (Ref # 221)	221B0612	1
SCREW CNTSNK HD 6X16 (Ref # 221A)	221B0616	3