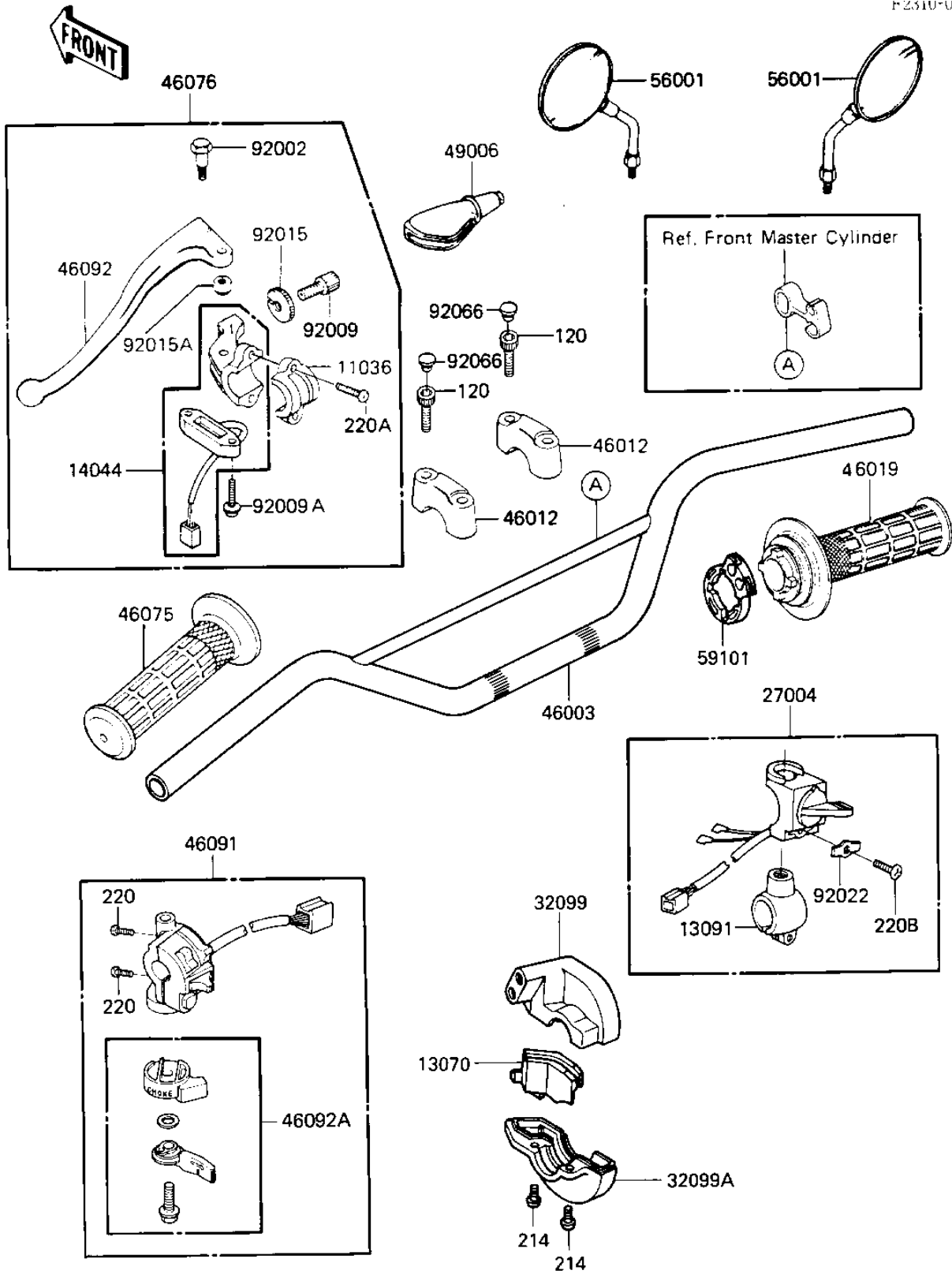


# 1985 KLR250 PARTS DIAGRAM

## HANDLEBAR

FZ31U-0346 ■



# 1985 KLR250 PARTS LIST

## HANDLEBAR

ITEM NAME	PART NUMBER	QUANTITY
BRACKET-A (Ref # 11036)	11036-1297	1
GUIDE (Ref # 13070)	13070-1131	1
HOLDER,ENGINE STOP SW (Ref # 13091)	13091-1255	1
HOLDER-CABLE,CLUTCH (Ref # 14044)	14044-1052	1
SWITCH-ASSY,ENGINE ST (Ref # 27004)	27004-1056	1
CASE (Ref # 32099)	32099-1072	1
CASE (Ref # 32099A)	32099-1073	1
HANDLE (Ref # 46003)	46003-1174	1
HOLDER-HANDLE (Ref # 46012)	46012-1102	2
GRIP-ASSY,THROTTLE (Ref # 46019)	46019-1054	1
GRIP,LH (Ref # 46075)	46075-1051	1
LEVER-ASSY-GRIP,CLUTC (Ref # 46076)	46076-1129	1
HOUSING-ASSY-CONTROL, (Ref # 46091)	46091-1309	1
LEVER-GRIP,CLUTCH (Ref # 46092)	46092-1111	1
LEVER-GRIP (Ref # 46092A)	46092-1123	1
BOOT,LEVER HOLDER (Ref # 49006)	49006-1099	1
MIRROR-ASSY (Ref # 56001)	56001-1204	2
REEL (Ref # 59101)	59101-1106	1
BOLT,LEVER SET (Ref # 92002)	92002-1475	1
SCREW,CABLE ADJUST (Ref # 92009)	46055-009	1
SCREW,TAPPING (Ref # 92009A)	92009-1336	2
NUT,CABLE ADJUST LOCK (Ref # 92015)	46056-006	1
NUT,LOCK,6MM,BLACK (Ref # 92015A)	92015-1191	1
WASHER,ENGINE STOP SW (Ref # 92022)	92022-1474	1
PLUG,HANDLE HOLDER (Ref # 92066)	92066-1216	4
BOLT-SOCKET,8X30,BLAC (Ref # 120)	120S0830	4
SCREW-PAN-CROS,5X18 (Ref # 214)	220C0518	2
SCREW-PAN-CROSS,5X14 (Ref # 220)	220C0514	2
SCREW-PAN-CROS, 6X14 (Ref # 220A)	220C0614	2

# 1985 KLR250 PARTS LIST

## HANDLEBAR

ITEM NAME	PART NUMBER	QUANTITY
SCREW-PAN-CROS, 6X20 (Ref # 220B)	220C0620	1