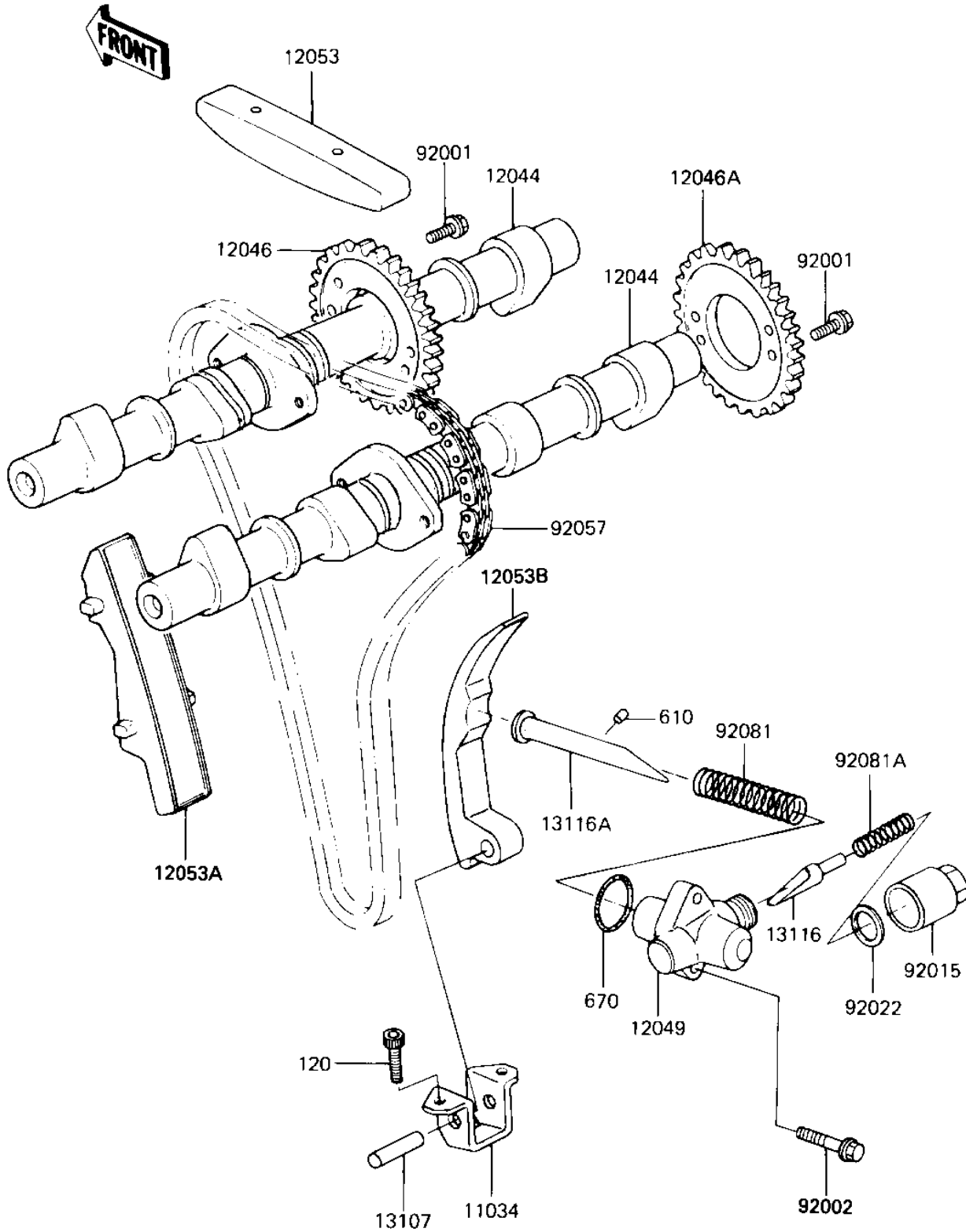


1986 GPz PARTS DIAGRAM

CAMSHAFT/CHAIN/TENSIONER

E1230-0041



1986 GPz PARTS LIST

CAMSHAFT/CHAIN/TENSIONER

| ITEM NAME | PART NUMBER | QUANTITY |
|--------------------------------------|-------------|----------|
| BRACKET,CHAIN GUIDE (Ref # 11034) | 11034-1240 | 1 |
| CAMSHAFT-VALVE (Ref # 12044) | 12044-1059 | 2 |
| SPROCKET,CAM,42T (Ref # 12046) | 12046-1019 | 1 |
| SPROCKET,CAMSHAFT,42T (Ref # 12046A) | 12046-1020 | 1 |
| TENSIONER,CAM CHAIN (Ref # 12049) | 12049-1016 | 1 |
| GUIDE,CAM CHAIN,HEAD (Ref # 12053) | 12053-1018 | 1 |
| GUIDE,CAM CHAIN,FRONT (Ref # 12053A) | 12053-1022 | 1 |
| GUIDE-CHAIN,CAM,RR (Ref # 12053B) | 12053-1113 | 1 |
| SHAFT,L=24.5 (Ref # 13107) | 13107-1142 | 1 |
| ROD,PUSH,CAM CHAIN (Ref # 13116) | 13116-1012 | 1 |
| ROD,PUSH,CAM CHAIN (Ref # 13116A) | 13116-1020 | 1 |
| BOLT,SPROCKET FITTING (Ref # 92001) | 92003-208 | 4 |
| BOLT,6X25 (Ref # 92002) | 92002-1086 | 2 |
| NUT,CAP,18MM,BLACK (Ref # 92015) | 92015-1177 | 1 |
| WASHER,18.3X24X1.4T (Ref # 92022) | 92022-1175 | 1 |
| CHAIN,CAM,82RH2015-14 (Ref # 92057) | 92057-1290 | 1 |
| SPRING,TENSIONER (Ref # 92081) | 92081-1075 | 1 |
| SPRING,TENSIONER (Ref # 92081A) | 92081-1302 | 1 |
| BOLT,ALLEN,6X18 (Ref # 120) | 120P0618 | 2 |
| PIN DOWEL 4X8 (Ref # 610) | 610A0408 | 1 |
| "O" RING,21MM (Ref # 670) | 670B2021 | 1 |