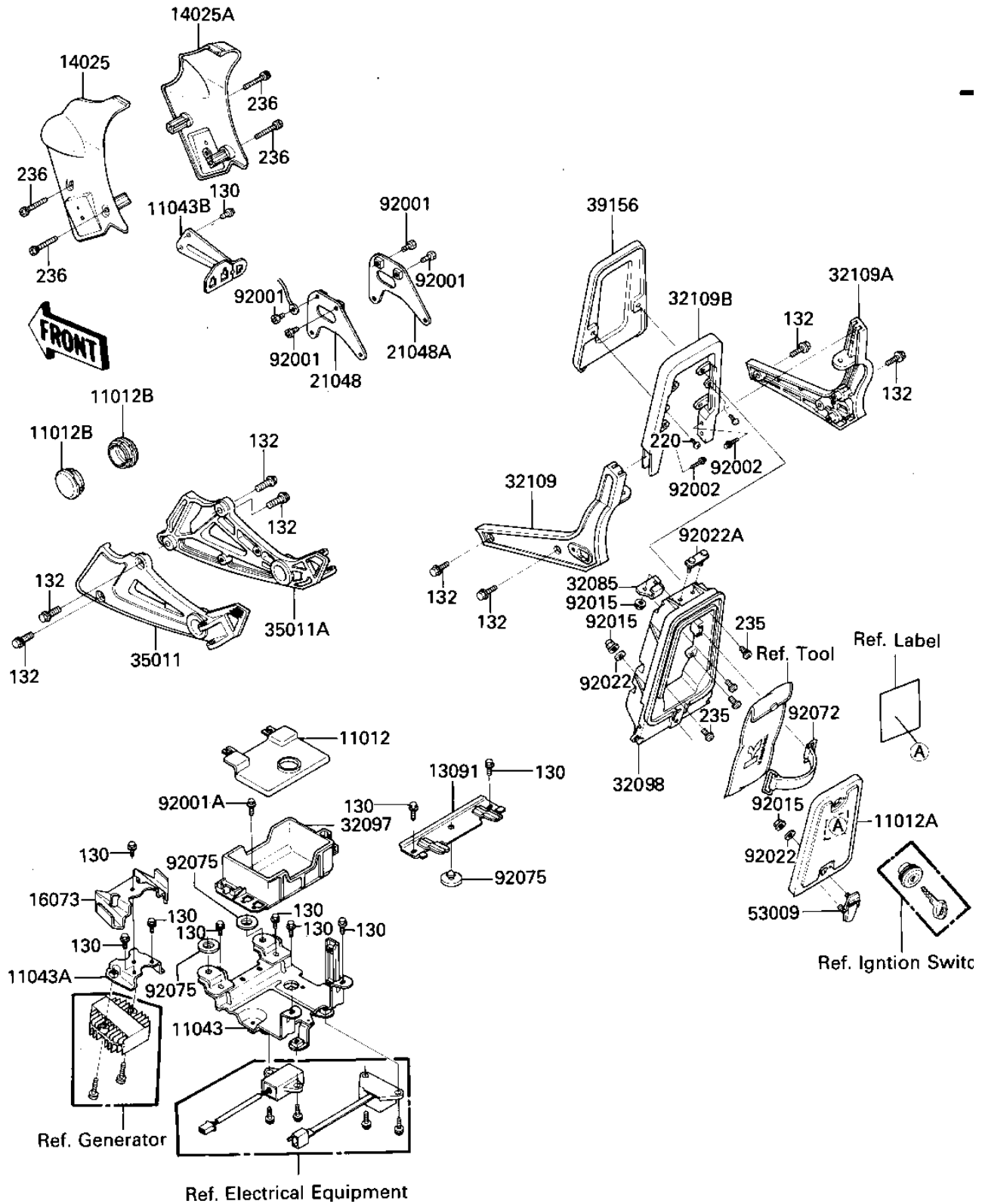


# 1985 LTD Shaft PARTS DIAGRAM

BATTERY CASE/TOOL CASE

F2132-0133



# 1985 LTD Shaft PARTS LIST

## BATTERY CASE/TOOL CASE

ITEM NAME	PART NUMBER	QUANTITY
CAP (Ref # 11012)	11012-1383	1
CAP,TOOL CASE (Ref # 11012A)	11012-1384	1
CAP,SWING ARM (Ref # 11012B)	11012-1688	2
BRACKET,BATTERY (Ref # 11043)	11043-1514	1
BRACKET,REGULATOR (Ref # 11043A)	11043-1515	1
BRACKET (Ref # 11043B)	11043-1639	1
HOLDER (Ref # 13091)	13091-1291	1
COVER,FUEL TANK,LH (Ref # 14025)	14025-1842	1
COVER,FUEL TANK,RH (Ref # 14025A)	14025-1843	1
INSULATOR (Ref # 16073)	16073-1051	1
PLATE-COIL,LH (Ref # 21048)	21048-1051	1
PLATE-COIL,RH (Ref # 21048A)	21048-1052	1
STOPPER (Ref # 32085)	32085-1184	1
CASE-BATTERY (Ref # 32097)	32097-1106	1
CASE-TOOL (Ref # 32098)	32098-1055	1
GRIP-FRAME,LOW,LH (Ref # 32109)	32109-1110	1
GRIP-FRAME,LOW,RH (Ref # 32109A)	32109-1111	1
GRIP-FRAME (Ref # 32109B)	32109-1112	1
STAY,MUFFLER,LH (Ref # 35011)	35011-1220	1
STAY,MUFFLER,RH (Ref # 35011A)	35011-1221	1
PAD (Ref # 39156)	39156-1052	1
HINGE,SIDEBAG (Ref # 53009)	53009-1039	1
BOLT,HEX HEAD,6MM (Ref # 92001)	92001-137	4
BOLT,W/SP,6X14 (Ref # 92001A)	92001-1862	1
BOLT (Ref # 92002)	92002-1352	4
NUT,LOCK 5MM (Ref # 92015)	92015-1263	4
WASHER PL 5.5X20X1.2 (Ref # 92022)	92022-104	2
WASHER (Ref # 92022A)	92022-1522	1
BAND-SPARK PLUG COVER (Ref # 92072)	92072-053	1

# 1985 LTD Shaft PARTS LIST

## BATTERY CASE/TOOL CASE

ITEM NAME	PART NUMBER	QUANTITY
DAMPER RUBBER (Ref # 92075)	92075-078	3
BOLT,FLANGED,6X10 (Ref # 130)	130B0610	10
BOLT-FLANGED-SMALL (Ref # 132)	132J0820	8
SCREW PAN HEAD 5X8 (Ref # 220)	220B0508	2
SCREW-PAN-WP-CROS (Ref # 235)	235B0510	4
SCREW-PAN-WSP-CROS (Ref # 236)	236C0645	4