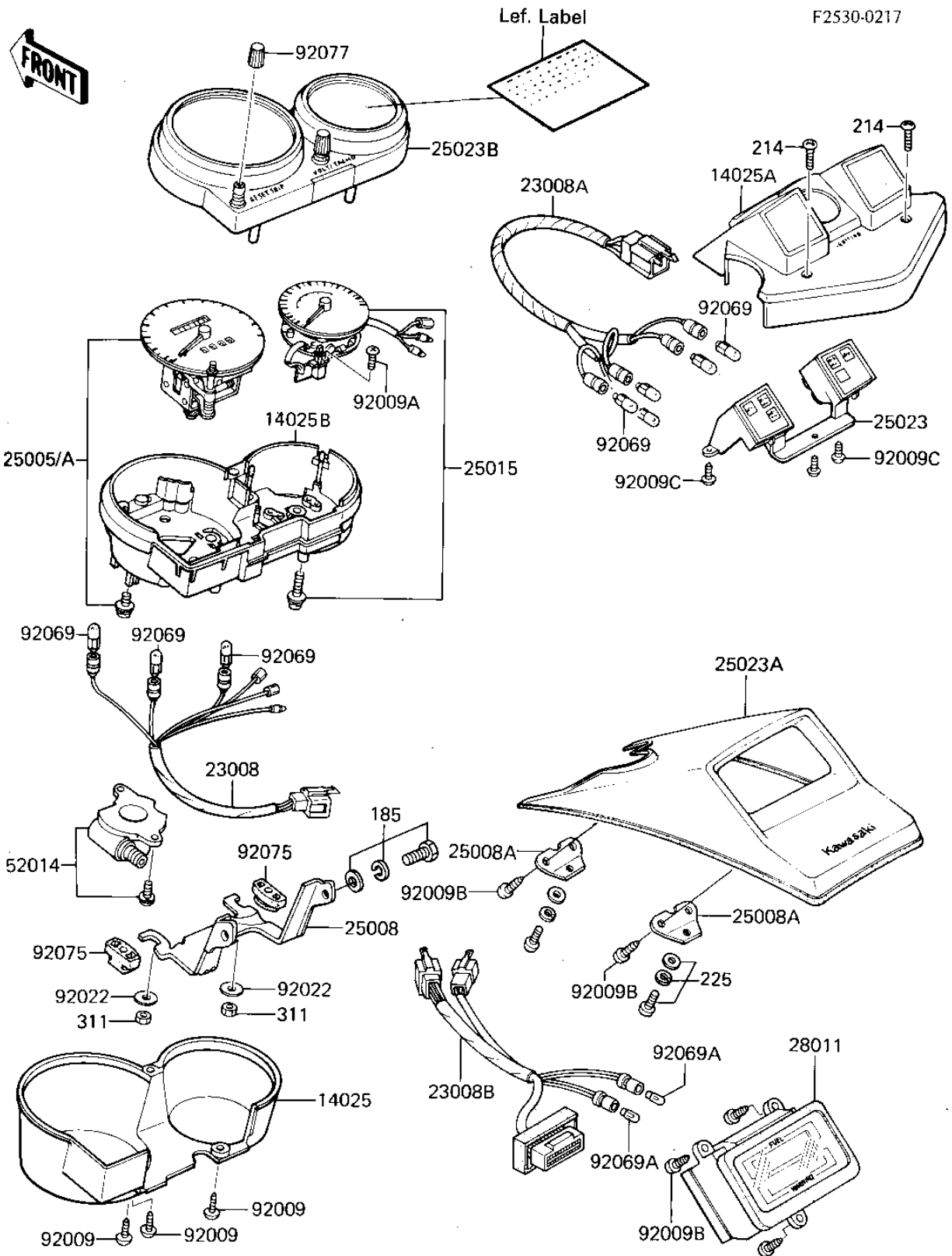


1985 GPz 750 PARTS DIAGRAM

METERS



1985 GPz 750 PARTS LIST

METERS

ITEM NAME	PART NUMBER	QUANTITY
COVER,METER CASE,LWR (Ref # 14025)	14025-1691	1
COVER,PILOT BOX (Ref # 14025A)	14025-1693	1
COVER,METER HOUSING (Ref # 14025B)	14025-1791	1
SOCKET-ASSY,METER (Ref # 23008)	23008-1188	1
SOCKET-ASSY,LAMP ASSY (Ref # 23008A)	23008-1191	1
SOCKET-ASSY,FUEL (Ref # 23008B)	23008-1201	1
SPEEDOMETER,MPH (Ref # 25005)	25005-1218	1
SPEEDOMETER,KPH (Canada) (Ref # 25005A)	25005-1219	1
BRACKET-METER (Ref # 25008)	25008-1060	1
BRACKET-METER,FUEL TA (Ref # 25008A)	25008-1103	2
TACHOMETER,X1000R/MIN (Ref # 25015)	25015-1151	1
COVER-METER CASE,LAMP (Ref # 25023)	25023-1057	1
COVER-METER CASE,FUEL (Ref # 25023A)	25023-1102	1
COVER-METER CASE,UPP (Ref # 25023B)	25023-1114	1
METER,FUEL&WARNING (Ref # 28011)	28011-1042	1
ELBOW,SPEEDOMETER GEA (Ref # 52014)	52014-1006	1
SCREW,4X16,BLACK (Ref # 92009)	92009-1158	3
SCREW,2X6,BLACK (Ref # 92009A)	92009-1172	2
SCREW,TAPPING,4X12 (Ref # 92009B)	92009-1254	7
SCREW,TAPPING,3X12 (Ref # 92009C)	92009-1255	3
WASHER,PLAIN,6MM (Ref # 92022)	92022-263	2
BULB,12V3W T-7 (Ref # 92069)	92069-1020	9
BULB,12V1.4W T-5 (Ref # 92069A)	92069-1051	2
DAMPER,METER BRACKET (Ref # 92075)	92075-1495	2
KNOB,RESET TRIP (Ref # 92077)	92077-1017	1
BOLT-UPSET-WSP-SMALL (Ref # 185)	185C0816	2
SCREW-PAN+- (Ref # 214)	214C0430	2
SCREW-PAN-WSP-CROS (Ref # 225)	225B0514	2
NUT,5MM (Ref # 311)	311B0500	2