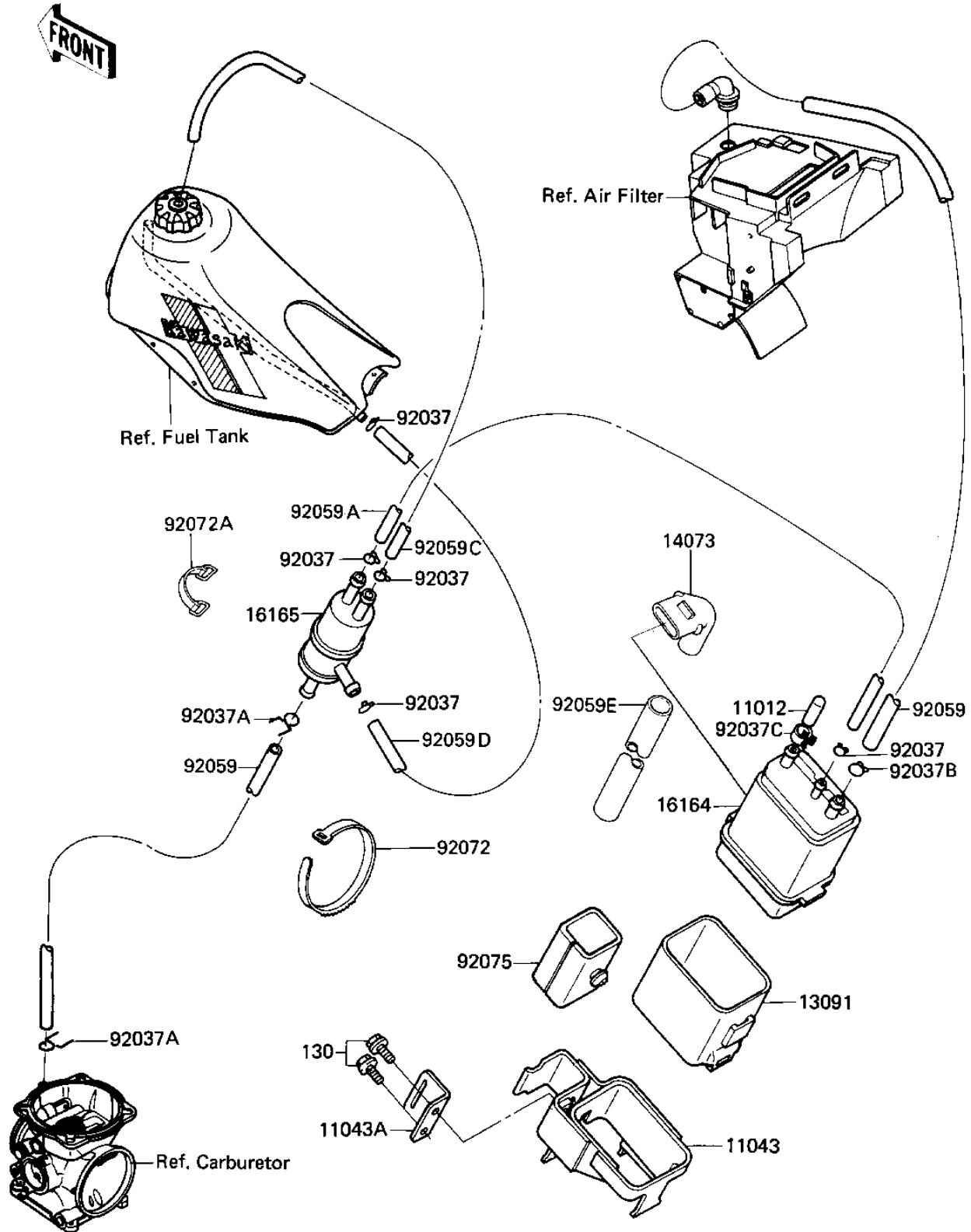


1984 KL600 PARTS DIAGRAM

CANISTER

E1650-0006



1984 KL600 PARTS LIST

CANISTER

| ITEM NAME | PART NUMBER | QUANTITY |
|--------------------------------|-------------|----------|
| CAP,CANISTER (Ref # 11012) | 11012-1388 | 1 |
| BRACKET,CANISTER (Ref # 11043) | 11043-1709 | 1 |
| BRACKET (Ref # 11043A) | 11043-1710 | 1 |
| HOLDER,CANISTER (Ref # 13091) | 13091-1176 | 1 |
| DUCT,CANISTER (Ref # 14073) | 14073-1219 | 1 |
| CANISTER (Ref # 16164) | 16164-1001 | 1 |
| SEPARATOR (Ref # 16165) | 16165-1001 | 1 |
| CLAMP FUEL PIPE (Ref # 92037) | 92037-010 | 5 |
| CLAMP-PIPE (Ref # 92037A) | 92037-072 | 2 |
| CLAMP-HOSE (Ref # 92037B) | 92037-1104 | 1 |
| CLAMP,CANISTER (Ref # 92037C) | 92037-1512 | 1 |
| TUBE,4X9X470 (Ref # 92059) | 92059-1402 | 1 |
| TUBE,5X8X660 (Ref # 92059A) | 92059-1410 | 1 |
| TUBE (Ref # 92059B) | 92059-1441 | 1 |
| TUBE (Ref # 92059C) | 92059-1442 | 1 |
| TUBE,5X8X340 (Ref # 92059D) | 92059-1469 | 1 |
| TUBE (Ref # 92059E) | 92059-1614 | 1 |
| BAND,LONG (Ref # 92072) | 92072-032 | 2 |
| BAND,TOOL (Ref # 92072A) | 92072-066 | 1 |
| DAMPER (Ref # 92075) | 92075-1628 | 1 |
| BOLT,FLANGED,6X10 (Ref # 130) | 130B0610 | 2 |