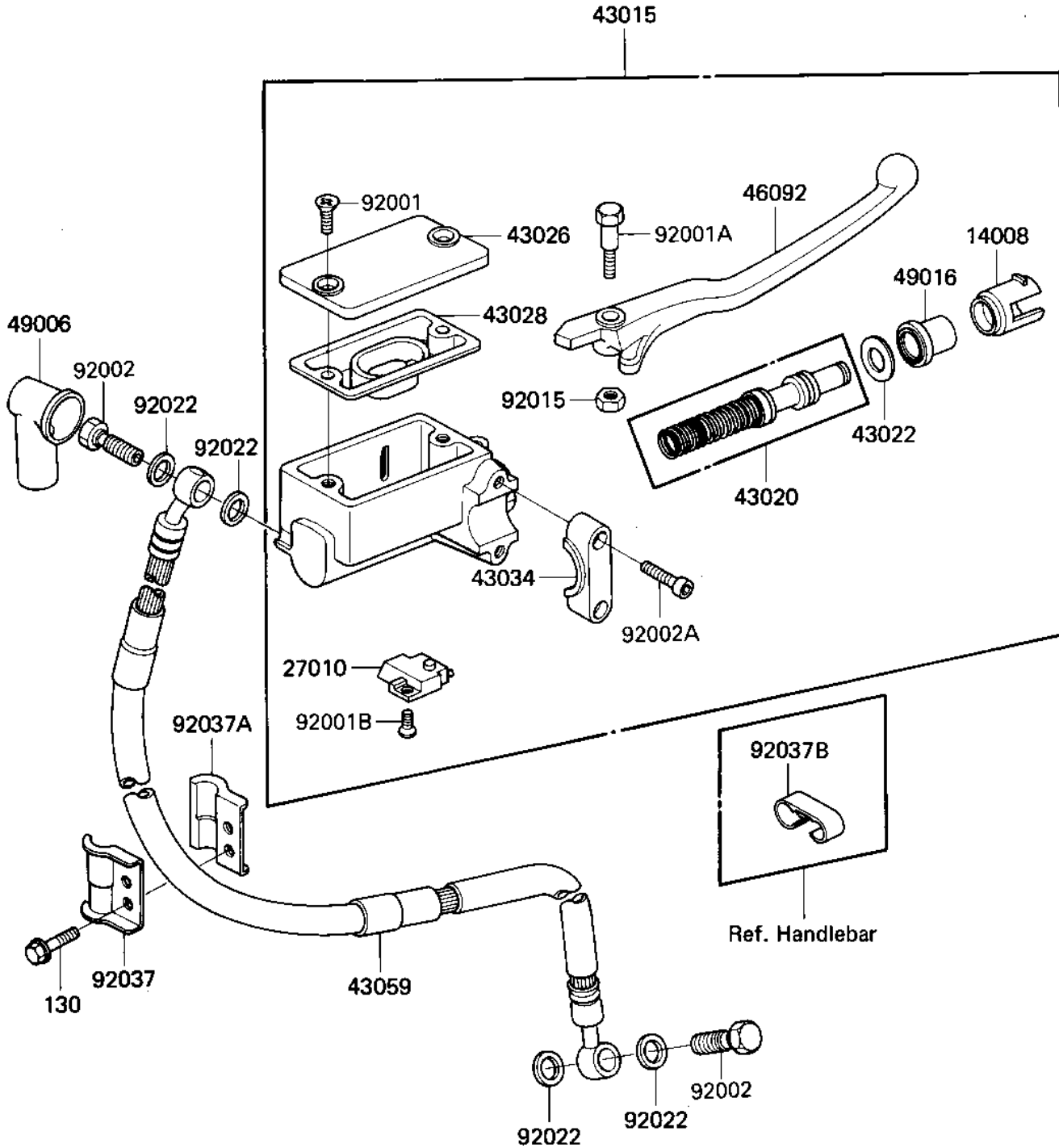


# 1984 KL600 PARTS DIAGRAM

## FRONT MASTER CYLINDER

F2291-0134



# 1984 KL600 PARTS LIST

## FRONT MASTER CYLINDER

ITEM NAME	PART NUMBER	QUANTITY
LINER (Ref # 14008)	14008-1030	1
SWITCH,BRAKE (Ref # 27010)	27010-1056	1
CYLINDER-ASSY-MASTER, (Ref # 43015)	43015-1257	1
PISTON-COMP-BRAKE (Ref # 43020)	43020-1021	1
STOPPER-BRAKE (Ref # 43022)	43022-1008	1
CAP-BRAKE (Ref # 43026)	43026-1020	1
DIAPHRAGM (Ref # 43028)	43028-1022	1
HOLDER-BRAKE,MASTER (Ref # 43034)	43034-1055	1
HOSE-BRAKE,L=1380 (Ref # 43059)	43059-1255	1
LEVER-GRIP,FRONT BRAK (Ref # 46092)	46092-1114	1
BOOT,DUST (Ref # 49006)	49006-1041	1
COVER-SEAL (Ref # 49016)	49016-1035	1
SCREW,COUNTERSUNK HED (Ref # 92001)	92001-1055	2
BOLT,6X37.3,BLACK (Ref # 92001A)	92001-1512	1
SCREW-COUNTERSUNK (Ref # 92001B)	92001-1532	1
BOLT,OIL,L=23 (Ref # 92002)	92002-1888	2
BOLT,SOCKET,6X22 (Ref # 92002A)	92002-1326	2
NUT,LOCK,6MM,BLACK (Ref # 92015)	92015-1191	1
WASHER-OIL BOLT (Ref # 92022)	43067-001	4
CLAMP,BRAKE HOSE,OUTS (Ref # 92037)	92037-1362	1
CLAMP,BRAKE HOSE,INSI (Ref # 92037A)	92037-1363	1
CLAMP,BRAKE HOSE (Ref # 92037B)	92037-1529	1
BOLT,FLANGED,6X14 (Ref # 130)	130G0614	2