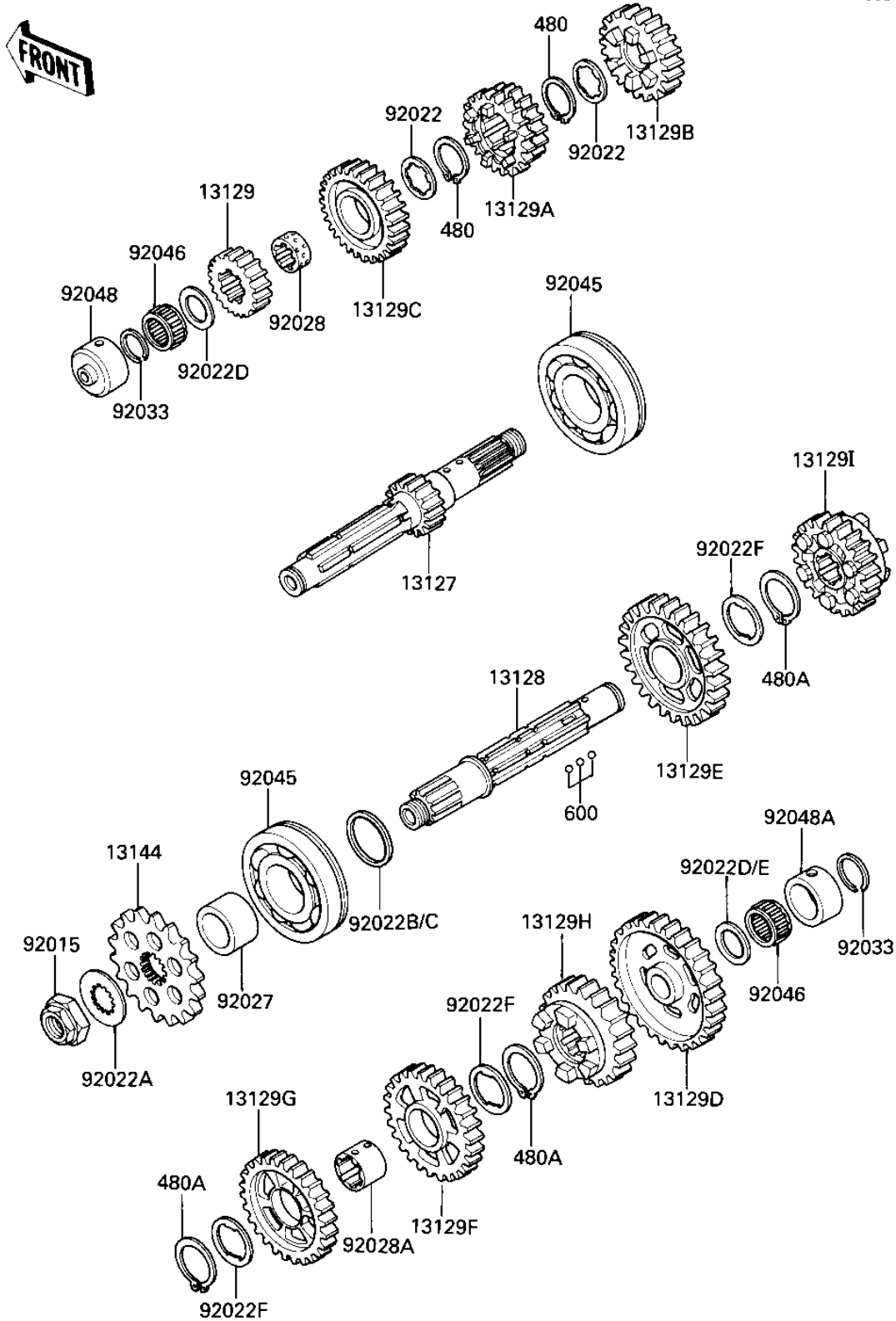


# 1985 Ninja® PARTS DIAGRAM

## TRANSMISSION

E1361-0142



# 1985 Ninja® PARTS LIST

## TRANSMISSION

ITEM NAME	PART NUMBER	QUANTITY
SHAFT-TRANSMISSION IN (Ref # 13127)	13127-1108	1
SHAFT-TRANSMISSION (Ref # 13128)	13128-1113	1
GEAR,INPUT 2ND,19T (Ref # 13129)	13129-1530	1
GEAR,INPUT 3RD&4TH,22 (Ref # 13129A)	13129-1531	1
GEAR,INPUT 5TH,26T (Ref # 13129B)	13129-1532	1
GEAR,INPUT TOP,28T (Ref # 13129C)	13129-1533	1
GEAR,OUTPUT LOW,42T (Ref # 13129D)	13129-1534	1
GEAR,OUTPUT 2ND,38T (Ref # 13129E)	13129-1535	1
GEAR,OUTPUT 3RD,35T (Ref # 13129F)	13129-1536	1
GEAR,OUTPUT 4TH,32T (Ref # 13129G)	13129-1537	1
GEAR,OUTPUT 5TH,30T (Ref # 13129H)	13129-1538	1
GEAR,OUTPUT TOP,29T (Ref # 13129I)	13129-1539	1
SPROCKET-OUTPUT,17T (Ref # 13144)	13144-1106	1
NUT,20MM (Ref # 92015)	92015-1210	1
WASHER,LOCK (O.D=35) (Ref # 92022)	92022-1077	2
WASHER (Ref # 92022A)	92200-1060	1
WASHER,28.3X34X0.5 (Ref # 92022B)	92022-1572	AR
WASHER,28.3X34X0.3 (Ref # 92022C)	92022-1626	AR
WASHER,PLAIN,22MM (Ref # 92022D)	92022-212	2
WASHER,PLAIN,22MM (Ref # 92022E)	92022-213	AR
WASHER,LOCK (Ref # 92022F)	92024-069	3
COLLAR (Ref # 92027)	92143-1431	1
BUSHING,TOP GEAR (Ref # 92028)	92028-1124	1
BUSHING,OUTPUT GEAR (Ref # 92028A)	92028-1271	1
CIRCLIP,25MM (Ref # 92033)	92033-025	2
BEARING-BALL (Ref # 92045)	92045-1186	2
BEARING,PK223013.8 (Ref # 92046)	92046-031	2
RACE,INPUT SHAFT (Ref # 92048)	92048-1052	1
RACE,30X38X15 (Ref # 92048A)	92048-1053	1

# 1985 Ninja® PARTS LIST

## TRANSMISSION

ITEM NAME	PART NUMBER	QUANTITY
CIRCLIP 28MM (Ref # 480)	480J2800	2
CIRCLIP (Ref # 480A)	480J2900	3
BALL STEEL 5/32' (Ref # 600)	600A0500	3