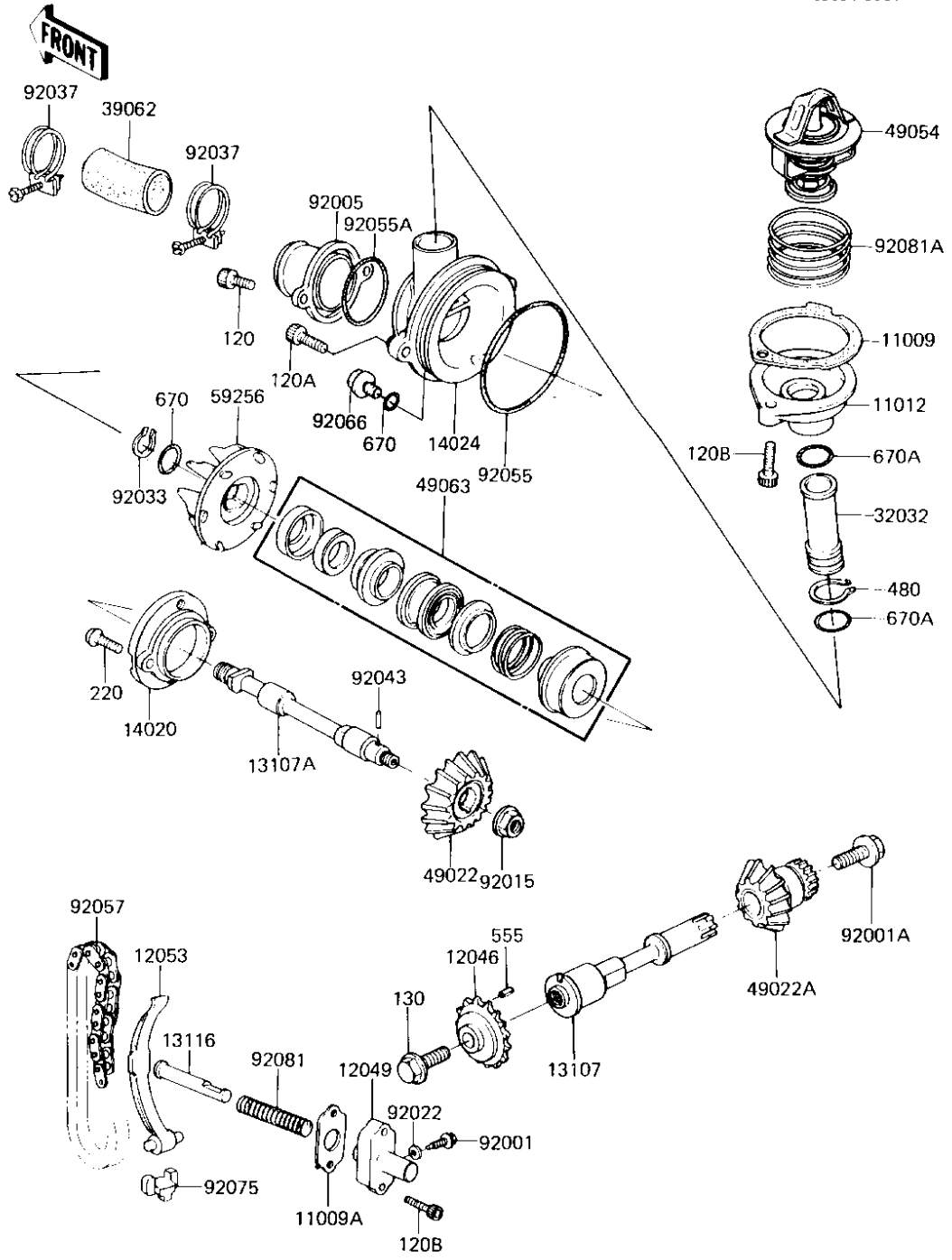


1983 Voyager PARTS DIAGRAM

WATER PUMP

E3031-0001



Part No.	Ref No.
92037	11
39062	11
92037	11
92005	11
92055A	11
120	11
120A	11
670	14
59256	30
92066	30
670	40
14024	40
92055	40
49063	40
92033	40
92043	40
14020	50
13107A	90
49022	90
92015	90
92057	90
12053	90
13116	90
92081	90
12049	90
130	90
12046	90
555	90
13107	90
92022	90
92001	90
92075	90
11009A	90
120B	90
49054	90
92081A	90
11009	90
11012	90
120B	90
670A	90
32032	90
480	90
670A	90

1983 Voyager PARTS LIST

WATER PUMP

ITEM NAME	PART NUMBER	QUANTITY
GASKET,THERMOSTAT CAP (Ref # 11009)	11009-1087	1
GASKET,TIMING TENSOR (Ref # 11009A)	11009-1099	1
CAP,THERMOSTAT (Ref # 11012)	11012-1054	1
SPROCKET,TIMING CHAIN (Ref # 12046)	12046-1015	1
TENSIONER,TIMING CHAN (Ref # 12049)	12049-1007	1
GUIDE,CHAIN,TIMING (Ref # 12053)	12053-1027	1
SHAFT,WATER PUMP DRIV (Ref # 13107)	13107-1009	1
SHAFT,WATER PUMP (Ref # 13107A)	13107-1011	1
ROD,PUSH,TENSIONER (Ref # 13116)	13116-1014	1
RETAINER,MECHA SEAL (Ref # 14020)	14020-1004	1
COVER,WATER PUMP (Ref # 14024)	14025-1864	1
PIPE,WATER BYPASS (Ref # 32032)	32032-1184	1
HOSE-COOLING (Ref # 39062)	39062-1020	1
GEAR,BEVEL,WATER PUMP (Ref # 49022)	49022-1006	1
GEAR-BEVEL,WATER PUMP (Ref # 49022A)	49022-1015	1
THERMOSTAT (Ref # 49054)	49054-1001	1
SEAL,MECHANICAL (Ref # 49063)	49063-1001	1
IMPELLER,WATER PUMP (Ref # 59256)	59256-1001	1
BELT,TENSIONER ADJUST (Ref # 92001)	92001-1155	1
BOLT,FLANGED,8X17 (Ref # 92001A)	92001-1371	1
FITTING,SUCTION (Ref # 92005)	92005-1011	1
NUT,8M/M (Ref # 92015)	92015-1014	1
WASHER OIL PUMP BANJO (Ref # 92022)	92022-077	1
CIRCLIP,11M/M,IMPELER (Ref # 92033)	92033-1024	1
CLAMP,HOSE (Ref # 92037)	92037-1177	2
PIN GEAR CHANGE DRUM (Ref # 92043)	92042-014	1
"O" RING,67MM (Ref # 92055)	92055-1032	1
"O" RING,OR2037 (Ref # 92055A)	92055-1033	1
CHAIN,TIMING,72L (Ref # 92057)	92057-1019	1

1983 Voyager PARTS LIST

WATER PUMP

ITEM NAME	PART NUMBER	QUANTITY
PLUG,DRAIN,8X10 (Ref # 92066)	92066-1026	1
DAMPER,TIMING CHAIN (Ref # 92075)	92075-1187	1
SPRING,TENSIONER (Ref # 92081)	92081-1102	1
SPRING,THERMOSTAT (Ref # 92081A)	92081-1104	1
BOLT-SOCKET (Ref # 120)	120Z0616	2
BOLT-SOCKET (Ref # 120A)	120Z0620	2
BOLT-SOCKET (Ref # 120B)	120Z0625	4
BOLT,FLANGED,8X20 (Ref # 130)	130G0820	1
SCREW-PAN-CROS (Ref # 220)	220R0516	2
CIRCLIP, 20MM (Ref # 480)	480J2000	1
PIN-SPRING,4X8 (Ref # 555)	555A0408	1
"O" RING,8MM (Ref # 670)	670B1508	2
"O" RING,16MM (Ref # 670A)	670B2016	2