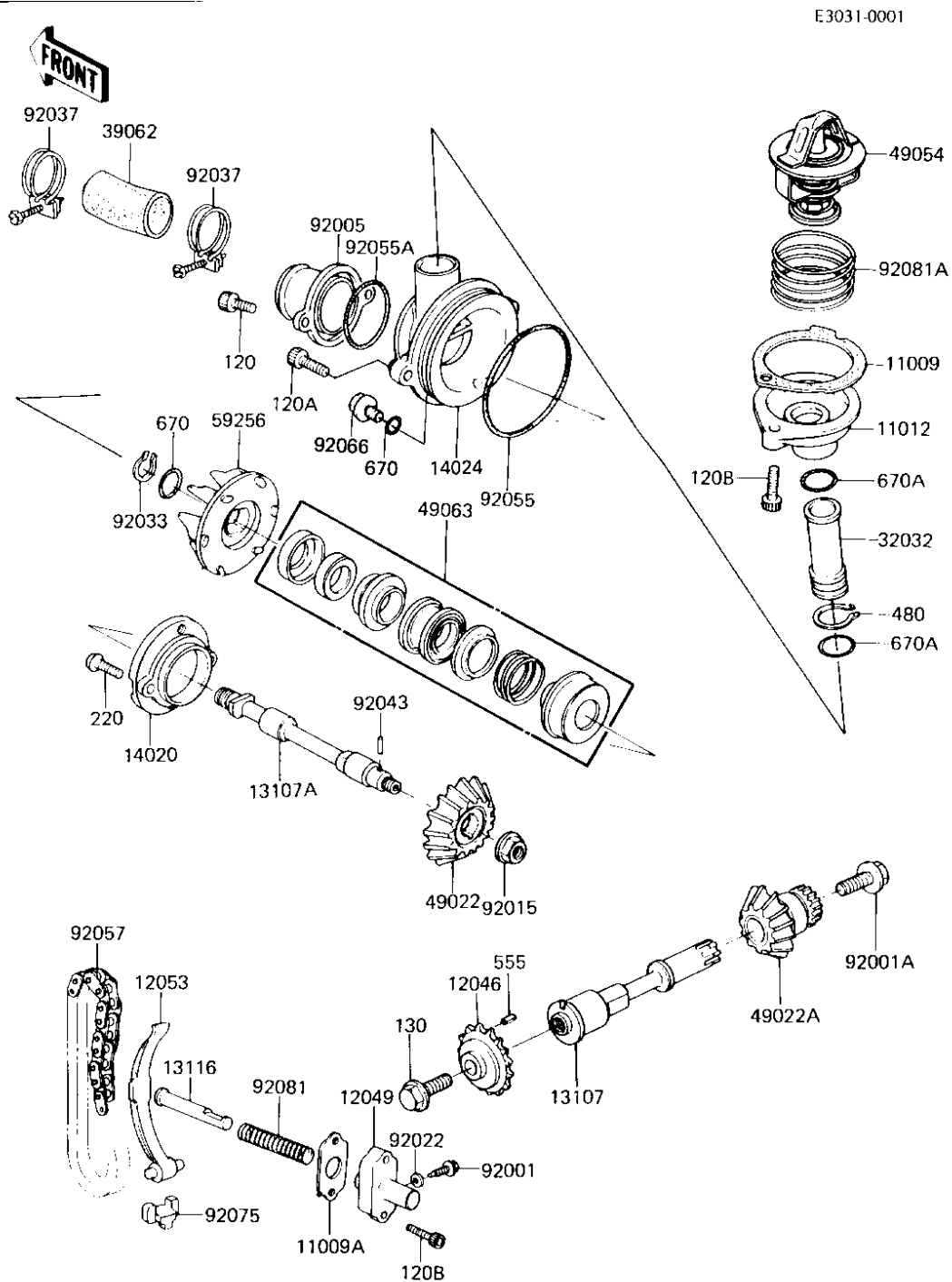


# 1986 Voyager PARTS DIAGRAM

## WATER PUMP



Ref No
11
11
11
12
12
12
12
12
14
33
33
48
48
48
48
48
48
48
48
48
48
48
48
92
92
92
92
92
92
92
92
92
92
92

# 1986 Voyager PARTS LIST

## WATER PUMP

ITEM NAME	PART NUMBER	QUANTITY
GASKET,THERMOSTAT CAP (Ref # 11009)	11009-1087	1
GASKET,TIMING TENSOR (Ref # 11009A)	11009-1099	1
CAP,THERMOSTAT (Ref # 11012)	11012-1054	1
SPROCKET,TIMING CHAIN (Ref # 12046)	12046-1015	1
TENSIONER,TIMING CHAN (Ref # 12049)	12049-1007	1
GUIDE,CHAIN,TIMING (Ref # 12053)	12053-1027	1
SHAFT,WATER PUMP DRIV (Ref # 13107)	13107-1009	1
SHAFT,WATER PUMP (Ref # 13107A)	13107-1011	1
ROD,PUSH,TENSIONER (Ref # 13116)	13116-1014	1
RETAINER,MECHA SEAL (Ref # 14020)	14020-1004	1
COVER,WATER PUMP (Ref # 14024)	14025-1864	1
PIPE,WATER BYPASS (Ref # 32032)	32032-1184	1
HOSE-COOLING (Ref # 39062)	39062-1020	1
GEAR,BEVEL,WATER PUMP (Ref # 49022)	49022-1006	1
GEAR-BEVEL,WATER PUMP (Ref # 49022A)	49022-1015	1
THERMOSTAT (Ref # 49054)	49054-1001	1
SEAL,MECHANICAL (Ref # 49063)	49063-1001	1
IMPELLER,WATER PUMP (Ref # 59256)	59256-1001	1
BELT,TENSIONER ADJUST (Ref # 92001)	92001-1155	1
BOLT,FLANGED,8X17 (Ref # 92001A)	92001-1371	1
FITTING,SUCTION (Ref # 92005)	92005-1011	1
NUT,8M/M (Ref # 92015)	92015-1014	1
WASHER OIL PUMP BANJO (Ref # 92022)	92022-077	1
CIRCLIP,11M/M,IMPELER (Ref # 92033)	92033-1024	1
CLAMP,HOSE (Ref # 92037)	92037-1177	2
PIN GEAR CHANGE DRUM (Ref # 92043)	92042-014	1
"O" RING,67MM (Ref # 92055)	92055-1032	1
"O" RING,OR2037 (Ref # 92055A)	92055-1033	1
CHAIN,TIMING,72L (Ref # 92057)	92057-1019	1

# 1986 Voyager PARTS LIST

## WATER PUMP

ITEM NAME	PART NUMBER	QUANTITY
PLUG,DRAIN,8X10 (Ref # 92066)	92066-1026	1
DAMPER,TIMING CHAIN (Ref # 92075)	92075-1187	1
SPRING,TENSIONER (Ref # 92081)	92081-1102	1
SPRING,THERMOSTAT (Ref # 92081A)	92081-1104	1
BOLT-SOCKET (Ref # 120)	120Z0616	2
BOLT-SOCKET (Ref # 120A)	120Z0620	2
BOLT-SOCKET (Ref # 120B)	120Z0625	4
BOLT,FLANGED,8X20 (Ref # 130)	130G0820	1
SCREW-PAN-CROS (Ref # 220)	220R0516	2
CIRCLIP, 20MM (Ref # 480)	480J2000	1
PIN-SPRING,4X8 (Ref # 555)	555A0408	1
"O" RING,8MM (Ref # 670)	670B1508	2
"O" RING,16MM (Ref # 670A)	670B2016	2