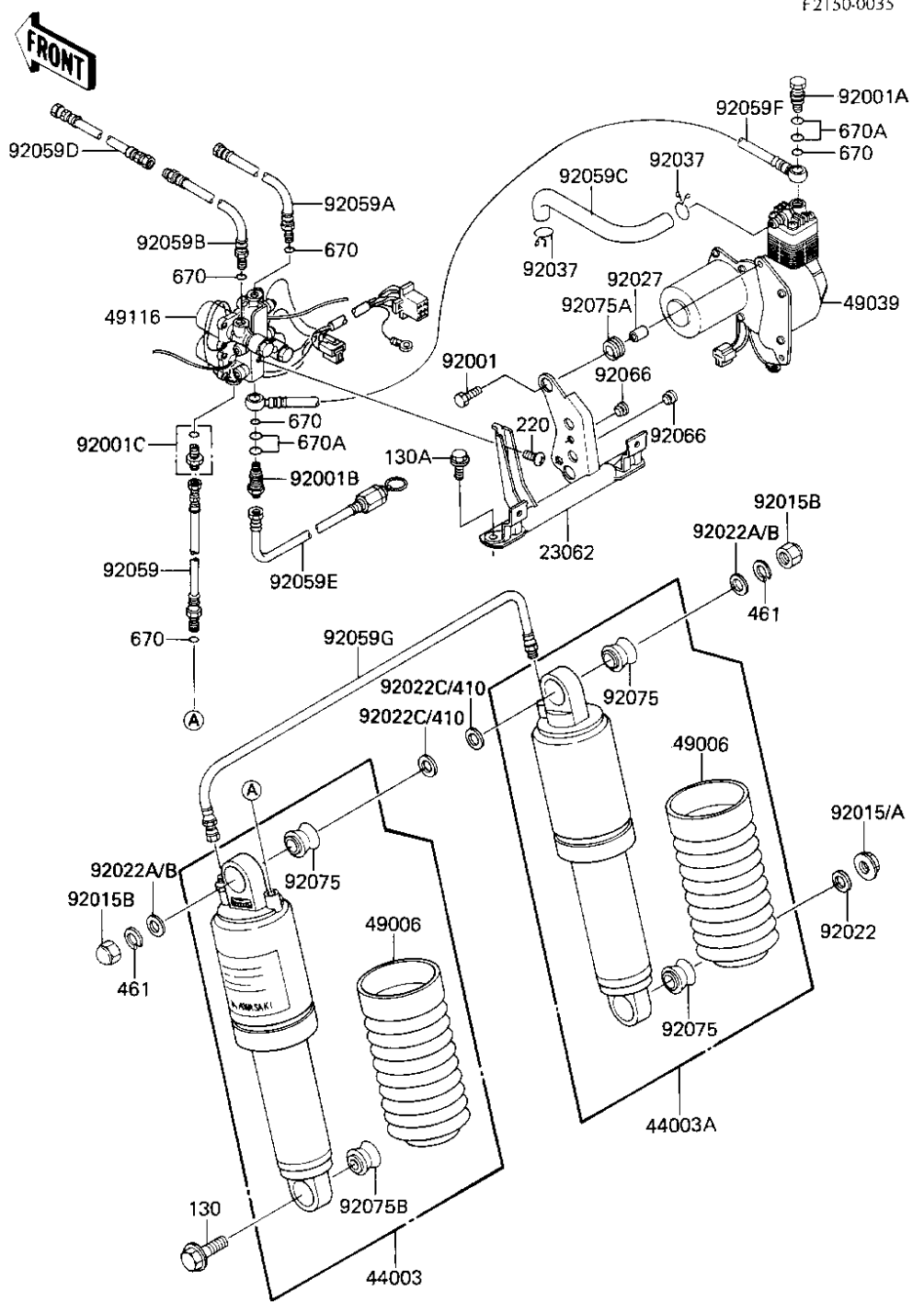


1985 Voyager PARTS DIAGRAM

AIR PUMP/SHOCK ABSORBERS

F2150-0035



Part No.	QTY
92059D	2
92059A	4
92059B	4
670	4
49116	4
92001C	2
92059	2
670	2
92059E	2
92001B	2
670	2
670A	2
130A	2
92001	2
220	2
23062	2
92066	2
92066	2
92015B	2
92022A/B	2
461	2
92059G	2
92022C/410	2
92022C/410	2
92075	2
49006	2
92022A/B	2
92015B	2
461	2
92075	2
49006	2
92015/A	2
92022	2
92075	2
44003A	2
130	2
92075B	2
44003	2
92059F	2
92001A	2
670A	2
670	2
92037	2
92059C	2
92037	2
92027	2
92075A	2
49039	2
92066	2
92066	2
92075	2
49006	2
92015/A	2
92022	2
92075	2
44003A	2

1985 Voyager PARTS LIST

AIR PUMP/SHOCK ABSORBERS

ITEM NAME	PART NUMBER	QUANTITY
BRACKET-COMP,AIR PUMP (Ref # 23062)	23062-1055	1
DAMPER-ASSY,LH (Ref # 44003)	44003-1473	1
DAMPER-ASSY,RH (Ref # 44003A)	44003-1474	1
BOOT,SHOCKABSORBER (Ref # 49006)	49006-1158	2
PUMP-AIR (Ref # 49039)	49039-1051	1
VALVE-ASSY,AIR PUMP (Ref # 49116)	49116-1053	1
BOLT (Ref # 92001)	92001-1826	2
BOLT,AIR PUMP (Ref # 92001A)	92001-1876	1
BOLT,VALVE (Ref # 92001B)	92001-1877	1
BOLT,NIPPLE (Ref # 92001C)	92001-1878	1
NUT,10MM (Ref # 92015A)	92015-1415	1
NUT 12MM (Ref # 92015B)	92020-014	2
WASHER,10.5X30X2.3 (Ref # 92022)	92022-1193	1
WASHER,12.4X28X2.3,BL (Ref # 92022B)	92022-1303	2
WASHER PLAIN 14MM (Ref # 92022C)	410B1400	2
COLLAR,6.8X10X8.5 (Ref # 92027)	92027-129	2
CLAMP (Ref # 92037)	92037-1468	2
TUBE,AIR,RR,L=500 (Ref # 92059)	92059-1286	1
TUBE,AIR,FR,L=1100 (Ref # 92059A)	92059-1287	1
TUBE,AIR GAUGE,L=1900 (Ref # 92059B)	92059-1288	1
TUBE (Ref # 92059C)	92059-1373	1
TUBE (Ref # 92059D)	92059-1374	1
TUBE (Ref # 92059E)	92059-1384	1
TUBE,L=200 (Ref # 92059F)	92059-1385	1
TUBE,SHOCKABSORBER (Ref # 92059G)	92059-1386	1
PLUG,RUBBER (Ref # 92066)	92074-028	2
BUSHING,SHOCK ABSORBE (Ref # 92075)	92075-1141	3
DAMPER (Ref # 92075A)	92075-1409	2
DAMPER,SHOCKABSORBER (Ref # 92075B)	92075-1586	1

1985 Voyager PARTS LIST

AIR PUMP/SHOCK ABSORBERS

ITEM NAME	PART NUMBER	QUANTITY
BOLT-FLANGED,10X35 (Ref # 130)	130B1035	1
BOLT-FLANGED,6X60 (Ref # 130A)	130J0660	2
SCREW-PAN-CROS,6X10,B (Ref # 220)	220C0610	1
WASHER SPRING 12MM (Ref # 461)	461F1200	2
"O" RING,6M/M (Ref # 670)	670B1506	5
"O" RING,8MM (Ref # 670A)	670B1508	4