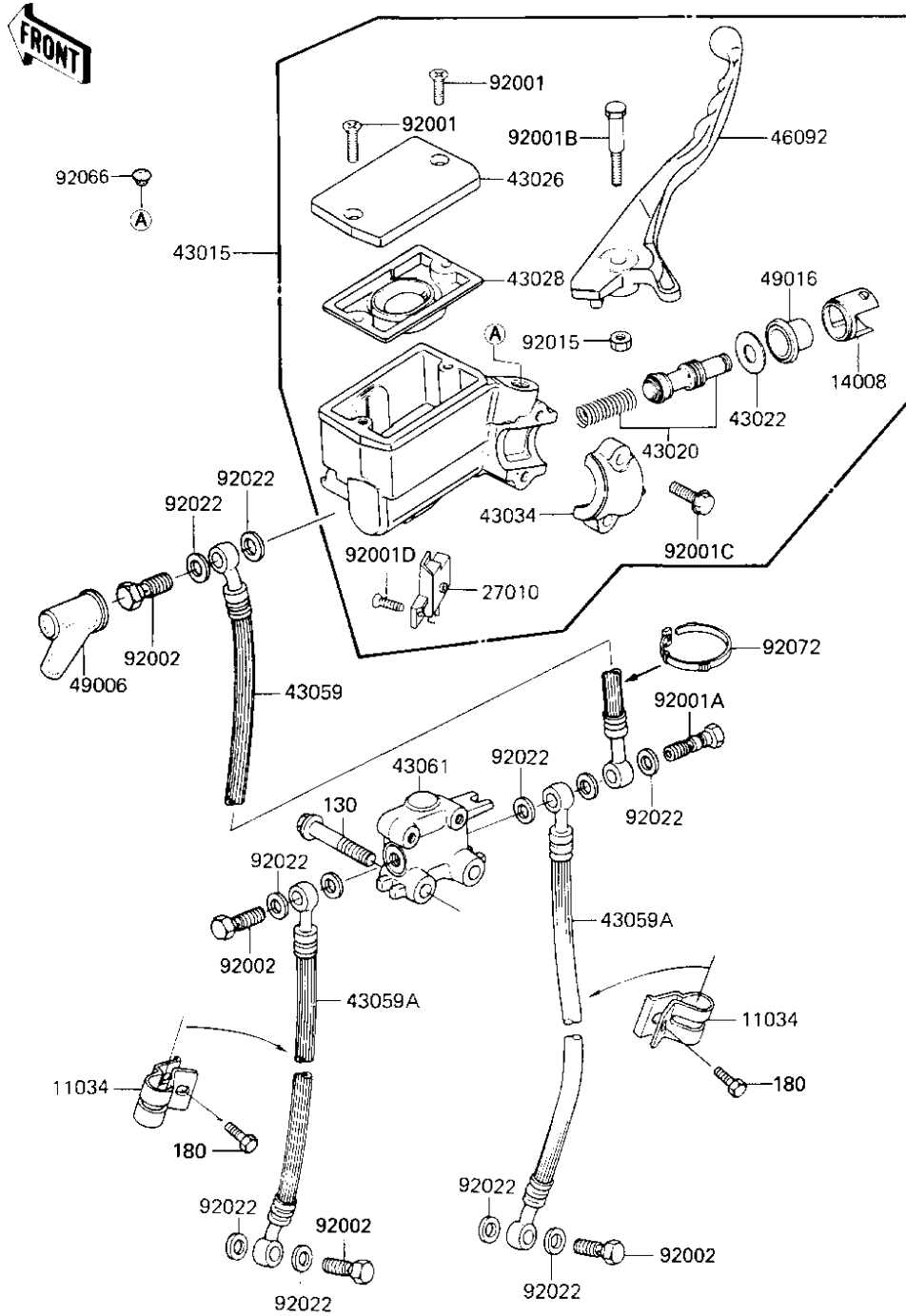


# 1983 Voyager PARTS DIAGRAM

## FRONT MASTER CYLINDER

F2291-0137



Re	Ni
17	
14	
21	
43	
43	
43	
43	
43	
43	
43	
43	
92	
92	
92	
92	
92	
92	
92	
92	
92	
92	
92	
92	
92	
92	
92	
92	
92	

# 1983 Voyager PARTS LIST

## FRONT MASTER CYLINDER

ITEM NAME	PART NUMBER	QUANTITY
BRACKET,BRAKE HOSE (Ref # 11034)	11034-1284	2
LINER,PISTON (Ref # 14008)	14008-1035	1
SWITCH,BRAKE (Ref # 27010)	27010-1056	1
CYLINDER-ASSY-MASTER (Ref # 43015)	43015-1141	1
PISTON-COMP-BRAKE (Ref # 43020)	43020-1079	1
STOPPER-BRAKE,PISTON (Ref # 43022)	43022-1009	1
CAP-BRAKE,MASTER CYLI (Ref # 43026)	43026-1027	1
DIAPHRAGM,MASTER CYL1 (Ref # 43028)	43028-1029	1
HOLDER,MASTER CYLINDR (Ref # 43034)	43034-1001	1
HOSE-BRAKE,L=550 (Ref # 43059)	43059-1160	1
HOSE-BRAKE,L=570 (Ref # 43059A)	43059-1175	2
JOINT,BRAKE (Ref # 43061)	43061-1001	1
LEVER-GRIP,FRONT BRAK (Ref # 46092)	46092-1102	1
BOOT,DUST (Ref # 49006)	49006-1067	1
COVER-SEAL,BRK PISTON (Ref # 49016)	49016-1041	1
SCREW,COUNTERSUNK HED (Ref # 92001)	92001-1055	2
BOLT (Ref # 92001A)	92002-1909	1
BOLT,6X37.3,BLACK (Ref # 92001B)	92001-1512	1
BOLT,W/WASHER,6X25,BL (Ref # 92001C)	92001-1513	2
SCREW-COUNTERSUNK (Ref # 92001D)	92001-1532	1
BOLT,OIL,L=23 (Ref # 92002)	92002-1888	4
NUT,LOCK,6MM,BLACK (Ref # 92015)	92015-1191	1
WASHER-OIL BOLT (Ref # 92022)	43067-001	11
BAND,WIRING HARNESS (Ref # 92072)	92072-056	1
BOLT,FLANGED,8X45 (Ref # 130)	130G0845	2
BOLT-UPSET-WS (Ref # 180)	180C0612	2