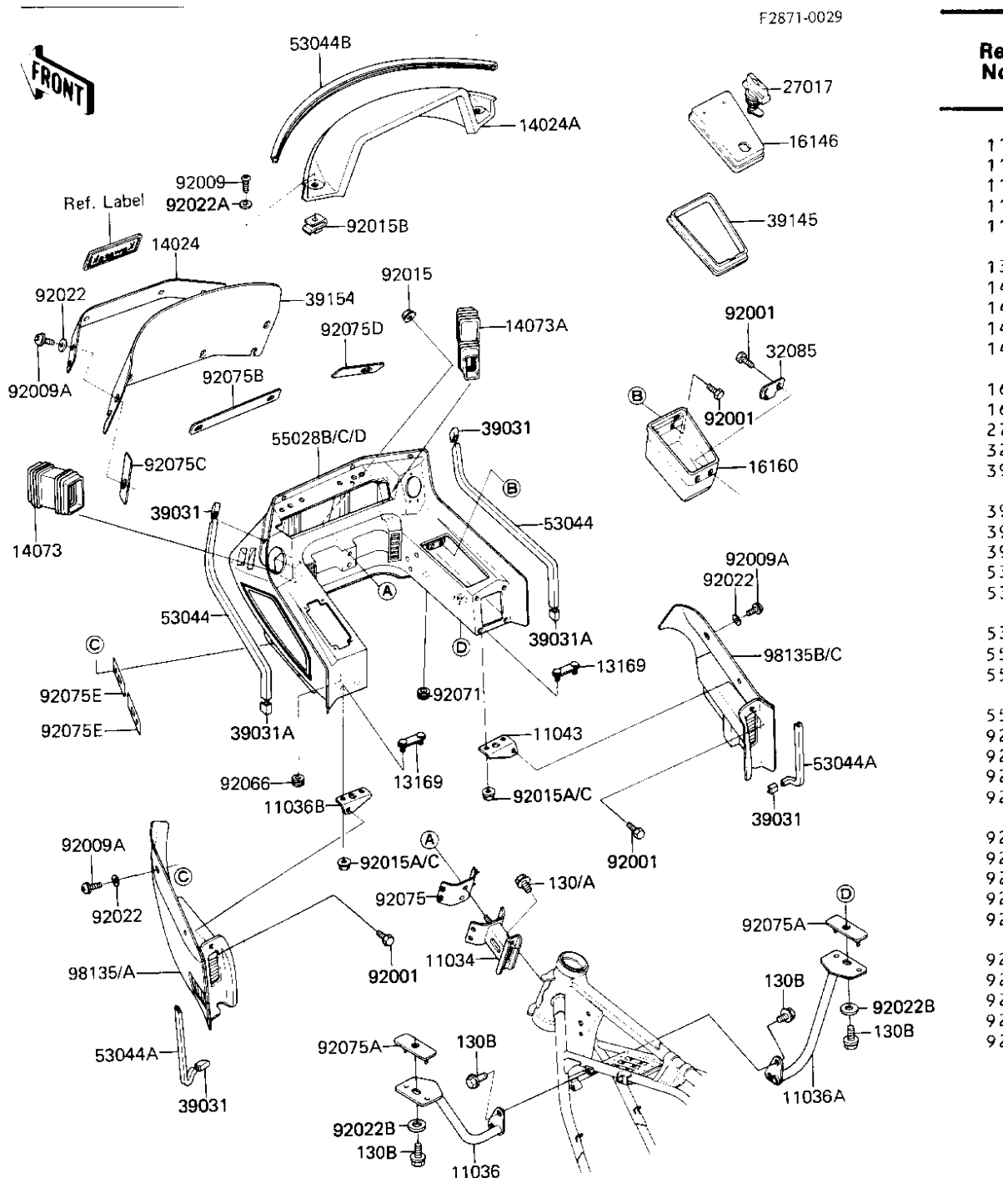


1984 Voyager PARTS DIAGRAM

FAIRING



Re
No

17

17

17

17

17

17

17

17

17

17

17

17

17

17

17

17

17

17

17

17

17

17

17

17

17

17

17

17

17

17

17

17

17

17

17

17

17

17

17

17

17

17

1984 Voyager PARTS LIST

FAIRING

ITEM NAME	PART NUMBER	QUANTITY
BRACKET,COWLING FITT (Ref # 11034)	11034-1485	1
BRACKET-A,COWLING UPP (Ref # 11036)	11036-1994	1
BRACKET-A,COWLING UPP (Ref # 11036A)	11036-1995	1
BRACKET-A,COWLING,LH (Ref # 11036B)	11036-1996	1
BRACKET-B,COWLING,RH (Ref # 11043)	11043-1055	1
PLATE,COWLING BLACKET (Ref # 13169)	13169-1612	2
COVER,WIND SHIELD (Ref # 14024)	14025-1663	1
COVER (Ref # 14024A)	14025-1784	1
DUCT,COWLING,LH (Ref # 14073)	14073-1101	1
DUCT,COWLING,RH (Ref # 14073A)	14073-1102	1
COVER,COWLING (Ref # 16146)	16146-1014	1
BODY,STORAGE CASE (Ref # 16160)	16160-1013	1
LOCK,BAG (Ref # 27017)	27017-1103	1
STOPPER,COWLING COVER (Ref # 32085)	32085-1159	1
CAP-END,COWLING TRIM (Ref # 39031)	39031-1052	4
CAP-END,COWLING TRIM (Ref # 39031A)	39031-1054	2
TRIM-SEAL,STORAGE CAS (Ref # 39145)	39145-1007	1
WINDSHIELD,COWLING (Ref # 39154)	39154-1013	1
TRIM,COWLING,UPP (Ref # 53044)	53044-1043	2
TRIM,COWLING,LWR (Ref # 53044A)	53044-1044	2
TRIM (Ref # 53044B)	53044-1113	1
COWLING,UPP.T.T.EBONY (Ref # 55028B)	55028-5071-F7	1
BOLT,6X12 (Ref # 92001)	92002-1884	6
SCREW,5X12,BLACK (Ref # 92009)	92009-1182	2
SCREW (Ref # 92009A)	92009-1664	8
NUT,FLANGED,8MM (Ref # 92015)	92015-1408	2
NUT-6MM (Ref # 92015A)	92015-1078	4
NUT,COVER,SIDE (Ref # 92015B)	92015-1261	2
WASHER,PLAIN,6.5X16X1 (Ref # 92022)	92022-1143	8

1984 Voyager PARTS LIST

FAIRING

ITEM NAME	PART NUMBER	QUANTITY
WASHER,5.5X20X1.2 (Ref # 92022A)	92022-1405	2
WASHER,8.5X20X1.6 (Ref # 92022B)	92022-1561	2
PLUG (Ref # 92066)	92074-027	1
GROMMET,WIRING HARNES (Ref # 92071)	92071-1021	1
DAMPER,COWLING FITT (Ref # 92075)	92075-1179	1
DAMPER,COWLING FITT (Ref # 92075A)	92075-1180	2
DAMPER,WIND SHIELD (Ref # 92075B)	92075-1466	1
DAMPER,COWLING,UPP,LH (Ref # 92075C)	92075-1579	1
DAMPER,COWLING,UPP,RH (Ref # 92075D)	92075-1580	1
DAMPER,COWLING (Ref # 92075E)	92075-1583	4
SUB-ASSY,LOW,LH,EBONY (Ref # 98135)	98135-1053-H8	1
SUB-ASSY,COWLING,EBON (Ref # 98135B)	98135-1054-H8	1
BOLT,FLANGED,8X14 (Ref # 130)	130G0814	2
BOLT-FLANGED,8X16 (Ref # 130B)	130G0816	6