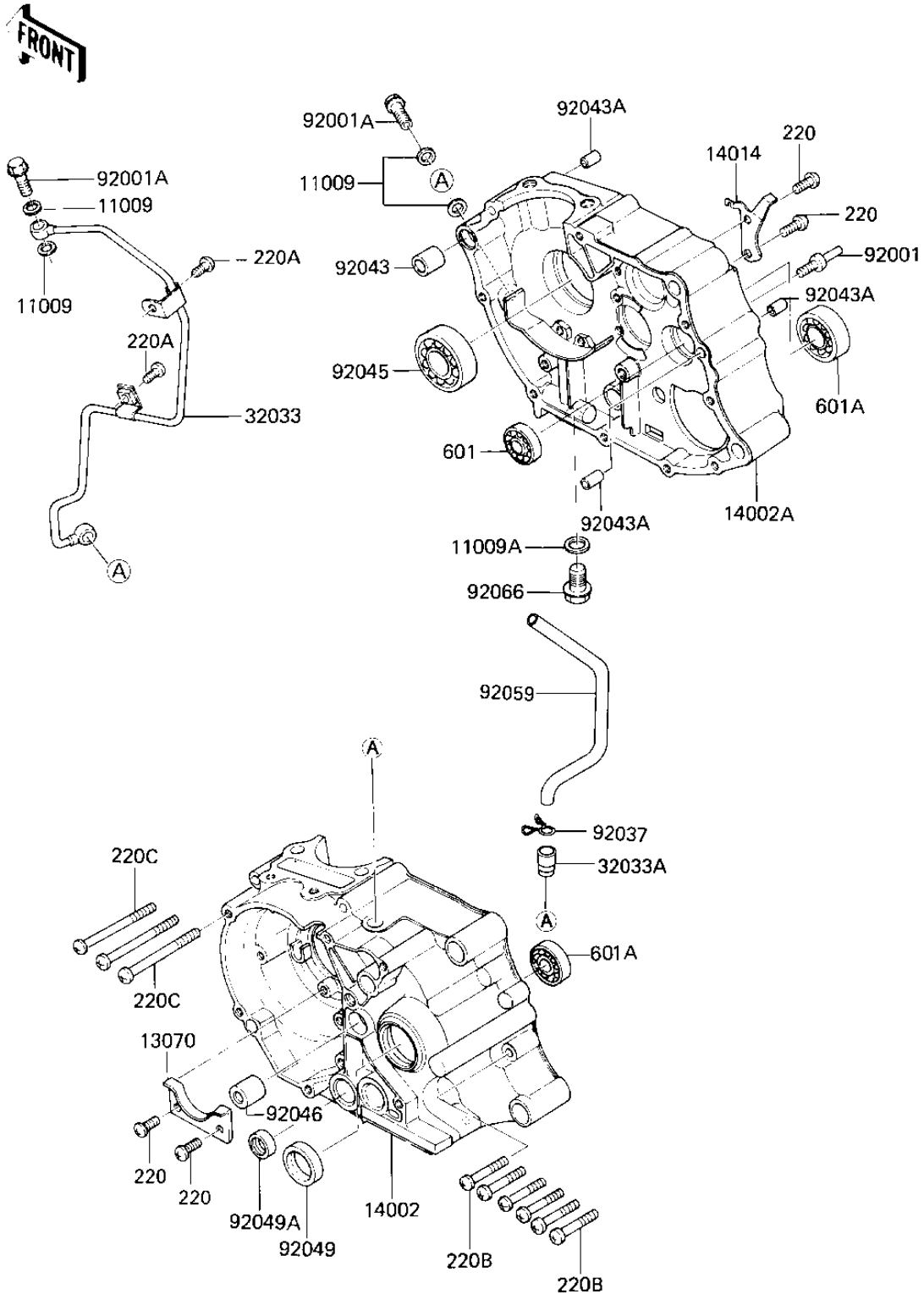


1986 KLT110 PARTS DIAGRAM

CRANKCASE

E1411-0102



1986 KLT110 PARTS LIST

CRANKCASE

ITEM NAME	PART NUMBER	QUANTITY
GASKET,OIL PIPE,8.2X1 (Ref # 11009)	11009-1344	4
GASKET,DRIN PLUG (Ref # 11009A)	92065-097	1
GUIDE,CAM CHAIN (Ref # 13070)	13070-1046	1
CRANKCASE,LH (Ref # 14002)	14002-1242	1
CRANKCASE,RH (Ref # 14002A)	14002-1243	1
PLATE-POSITION (Ref # 14014)	14014-1031	1
PIPE-A,OIL (Ref # 32033)	32033-1089	1
PIPE,BREATHER (Ref # 32033A)	32033-1518	1
BOLT,RETURN SPRING (Ref # 92001)	92001-1401	1
BOLT,BANJO,8X22 (Ref # 92001A)	92002-1871	2
CLAMP,BREATHER HOSE (Ref # 92037)	92037-192	1
PIN,DOWEL,14MM (Ref # 92043)	92042-032	1
PIN,DOWEL,6.2X8X14 (Ref # 92043A)	92043-1263	3
BEARING-BALL,#6304 (Ref # 92045)	92045-1107	1
BEARING-NEEDLE,BK1312 (Ref # 92046)	92046-1034	1
OIL SEAL,SC22325 (Ref # 92049)	92049-1048	1
OIL SEAL,TB13225.5 (Ref # 92049A)	92051-005	1
TUBE,BREATHER (Ref # 92059)	92059-1510	1
PLUG,OIL DRAIN,12X15 (Ref # 92066)	92066-1174	1
SCREW PAN HEAD 6X14 (Ref # 220)	220B0614	4
SCREW-PAN-CROS (Ref # 220A)	220X0612	2
SCREW-PAN-CROS (Ref # 220B)	220X0635	6
SCREW-PAN-CROS (Ref # 220C)	220X0675	3
BEARING-BALL (Ref # 601)	601A6201	1
BEARING BALL #6203 (Ref # 601A)	601A6203	2