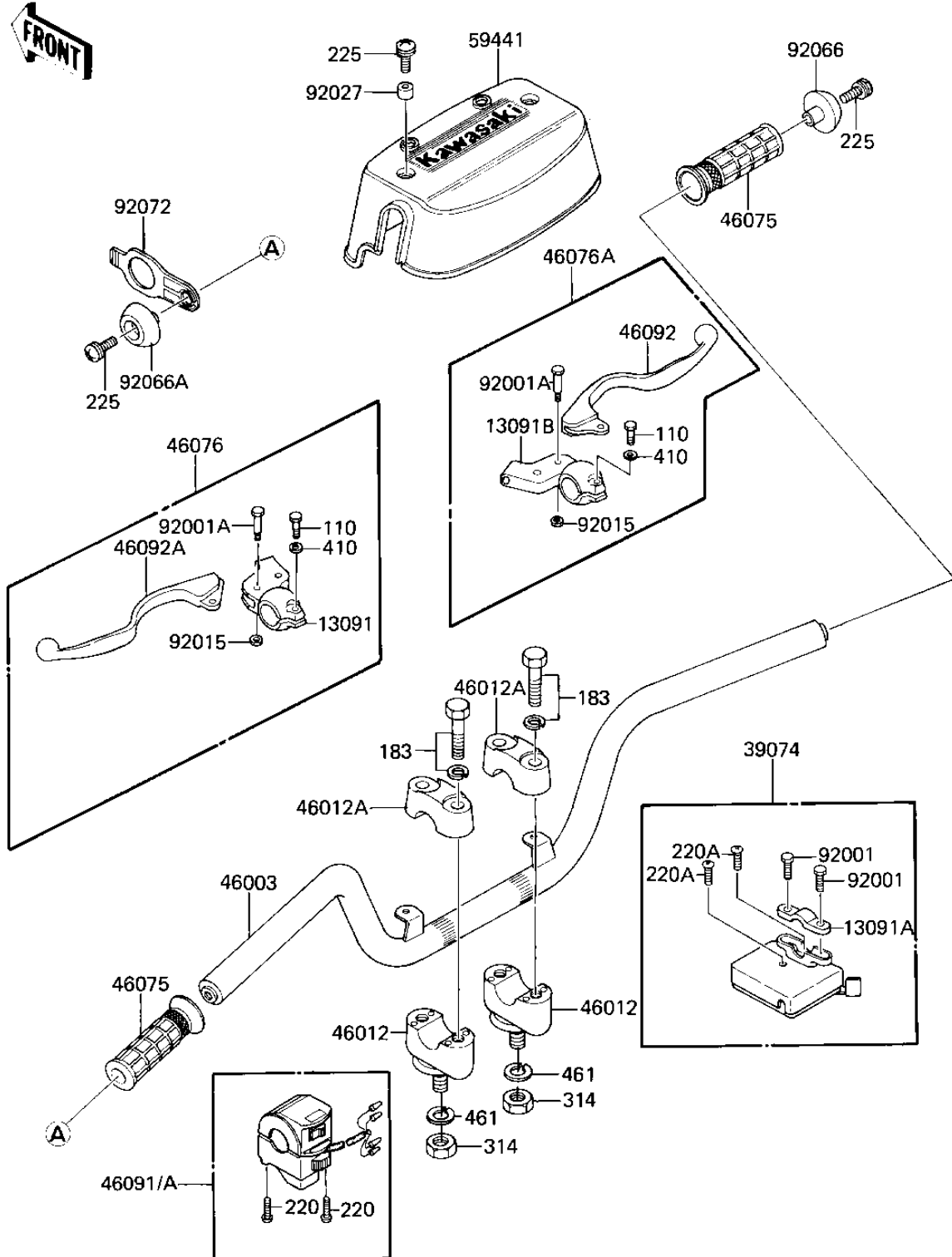


1986 KLT110 PARTS DIAGRAM

HANDLEBAR (KLT110-A1)

F2310-0293



1986 KLT110 PARTS LIST

HANDLEBAR (KLT110-A1)

ITEM NAME	PART NUMBER	QUANTITY
HOLDER (Ref # 13091)	13091-4015	1
HOLDER,THROTTLE LEVER (Ref # 13091A)	13091-4017	1
HOLDER,FRONT BRAKE LE (Ref # 13091B)	13091-4018	1
LEVER-ASSY-THROTTLE (Ref # 39074)	39074-4002	1
HANDLEBAR,BLACK (Ref # 46003)	46003-4006	1
HOLDER,HANDLEBAR,BUFF (Ref # 46012)	46012-002-80	2
HOLDER UPPER HANDLEBAR (Ref # 46012A)	46012-004	2
GRIP,RH (Ref # 46075)	46075-4003	2
LEVER-ASSY-GRIP (Ref # 46076)	46076-4001	1
LEVER-ASSY-GRIP (Ref # 46076A)	46076-4003	1
HOUSING-ASSY-CONTROL, (Ref # 46091)	46091-1392	1
HOUSING-ASSY-CONTROL, (Ref # 46091A)	46091-1392	1
LEVER,FRONT BRAKE (Ref # 46092)	46092-1014	1
LEVER,CLUTCH (Ref # 46092A)	46092-1015	1
COVER-HANDLEBAR (Ref # 59441)	59441-4001	1
BOLT (Ref # 92001)	92001-4024	2
BOLT,HEX HEAD,5X22 (Ref # 92001A)	92007-046	2
NUT-LOCK,5MM (Ref # 92015)	92019-014	2
COLLAR,6.8X10X8.5 (Ref # 92027)	92027-129	2
PLUG,HANDLE (Ref # 92066)	92066-1191	1
PLUG,BRAKE LEVER (Ref # 92066A)	92066-4005	1
BAND-BRAKE LEVER (Ref # 92072)	92072-4007	1
BOLT HEX HEAD 6X25 (Ref # 110)	110N0625	2
BOLT-UPSET-WS-SMALL (Ref # 183)	183B0835	4
SCREW-PAN-CROS (Ref # 220)	220B0535	4
SCREW-PAN-CROS,6X10,B (Ref # 220A)	220C0610	2
SCREW-PAN-WSP-CROS,6X (Ref # 225)	225C0620	4
NUT,10MM (Ref # 314)	314B1000	2
WASHER PLAIN 6MM (Ref # 410)	410B0600	2