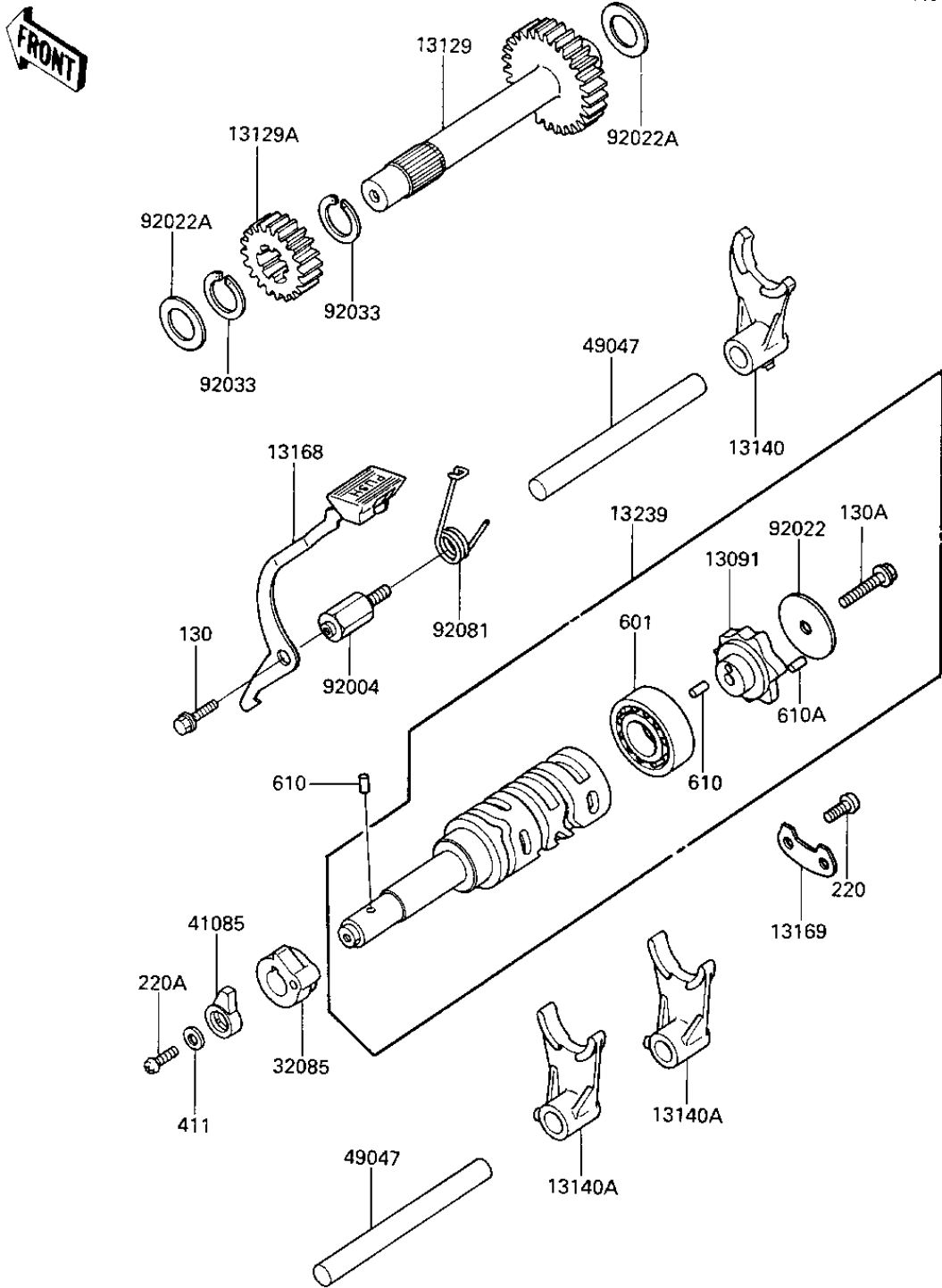


# 1985 KLT160 PARTS DIAGRAM

## GEAR CHANGE DRUM & FORKS

E1362-0090



# 1985 KLT160 PARTS LIST

## GEAR CHANGE DRUM & FORKS

ITEM NAME	PART NUMBER	QUANTITY
HOLDER (Ref # 13091)	13091-1279	1
GEAR,REVERSE (Ref # 13129)	13129-1549	1
GEAR,REVERSE,21T (Ref # 13129A)	13129-1550	1
FORK-SHIFT (Ref # 13140)	13140-1106	1
FORK-SHIFT (Ref # 13140A)	13140-1107	2
LEVER,CHANGE (Ref # 13168)	13168-1308	1
PLATE (Ref # 13169)	13169-1749	1
DRUM-ASSY-CHANGE (Ref # 13239)	13239-1104	1
STOPPER,CHANGE DRUM (Ref # 32085)	32085-1164	1
INDICATOR,CHANGE DRUM (Ref # 41085)	41085-1004	1
ROD-SHIFT (Ref # 49047)	49047-1073	2
STUD (Ref # 92004)	92004-1138	1
WASHER,6.2X38X1.2 (Ref # 92022)	92022-1500	1
WASHER,THRUST,15MM (Ref # 92022A)	92022-279	2
CIRCLIP,18MM (Ref # 92033)	92033-029	2
SPRING (Ref # 92081)	92081-1649	1
BOLT-FLANGED, 6X12 (Ref # 130)	130G0612	1
BOLT-FLANGED, 6X35 (Ref # 130A)	130G0633	1
SCREW PAN HEAD 6X14 (Ref # 220)	220B0614	2
SCREW-PAN-CROS (Ref # 220A)	220C0508	1
WASHER PLAIN 5MM (Ref # 411)	411B0500	1
BEARING BALL #6004 (Ref # 601)	601B6004	1
PIN-DOWEL,4X6 (Ref # 610)	610A0406	2
PIN DOWEL 4X10 (Ref # 610A)	610A0410	6