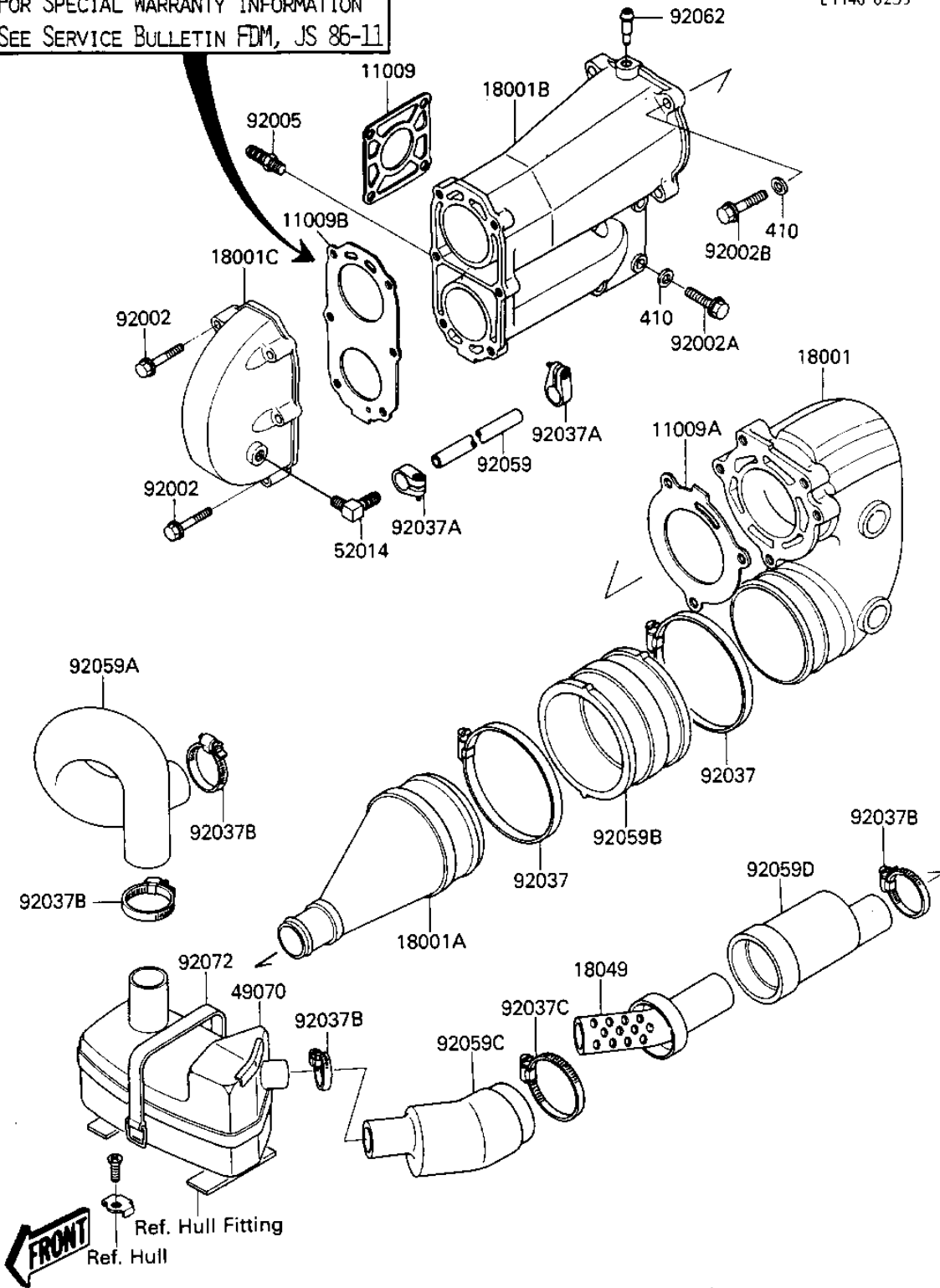


1986 JS300 PARTS DIAGRAM

MUFFLER

IMPORTANT
FOR SPECIAL WARRANTY INFORMATION
SEE SERVICE BULLETIN FDM, JS 86-11

E1140-0239



1986 JS300 PARTS LIST

MUFFLER

ITEM NAME	PART NUMBER	QUANTITY
GASKET,MUFFLER MANIFO (Ref # 11009)	11009-3750	1
GASKET,MUFFLER (Ref # 11009A)	11009-3713	1
GASKET-MUFFLER (Ref # 11009B)	11009-3744	1
MUFFLER,TUNED (Ref # 18001)	18001-3709	1
MUFFLER,BODY (Ref # 18001A)	18001-3710	1
MUFFLER,MANIFOLD (Ref # 18001B)	18001-3724	1
MUFFLER,TUNED (Ref # 18001C)	18001-3717	1
PIPE-RESNTR. CONNECTR (Ref # 18049)	59151-528	1
MUFFLER-COMP WTR BOX (Ref # 49070)	49070-3713	1
ELBOW-WATER HOSE (Ref # 52014)	52014-3002	1
BOLT,6X45 (Ref # 92002)	92002-3717	6
BOLT (Ref # 92002A)	92150-3725	4
BOLT (Ref # 92002B)	92002-3740	3
JOINT,HOSE (Ref # 92005)	92005-3001	1
CLAMP,MAX 120,7MM (Ref # 92037)	92037-3733	2
CLAMP,HOSE (Ref # 92037A)	92037-504	2
CLAMP (Ref # 92037B)	92037-509	4
CLAMP (Ref # 92037C)	92037-541	1
TUBE,9X16X400 (Ref # 92059)	92059-3718	1
TUBE,EXHAUST (Ref # 92059A)	92059-3722	1
TUBE,MUFFLER CONNECTI (Ref # 92059B)	92059-3768	1
TUBE (Ref # 92059C)	92059-542	1
TUBE (Ref # 92059D)	92059-543	1
NOZZLE (Ref # 92062)	92062-3705	1
BAND (Ref # 92072)	92072-511	2
WASHER (Ref # 410)	410S0800	7