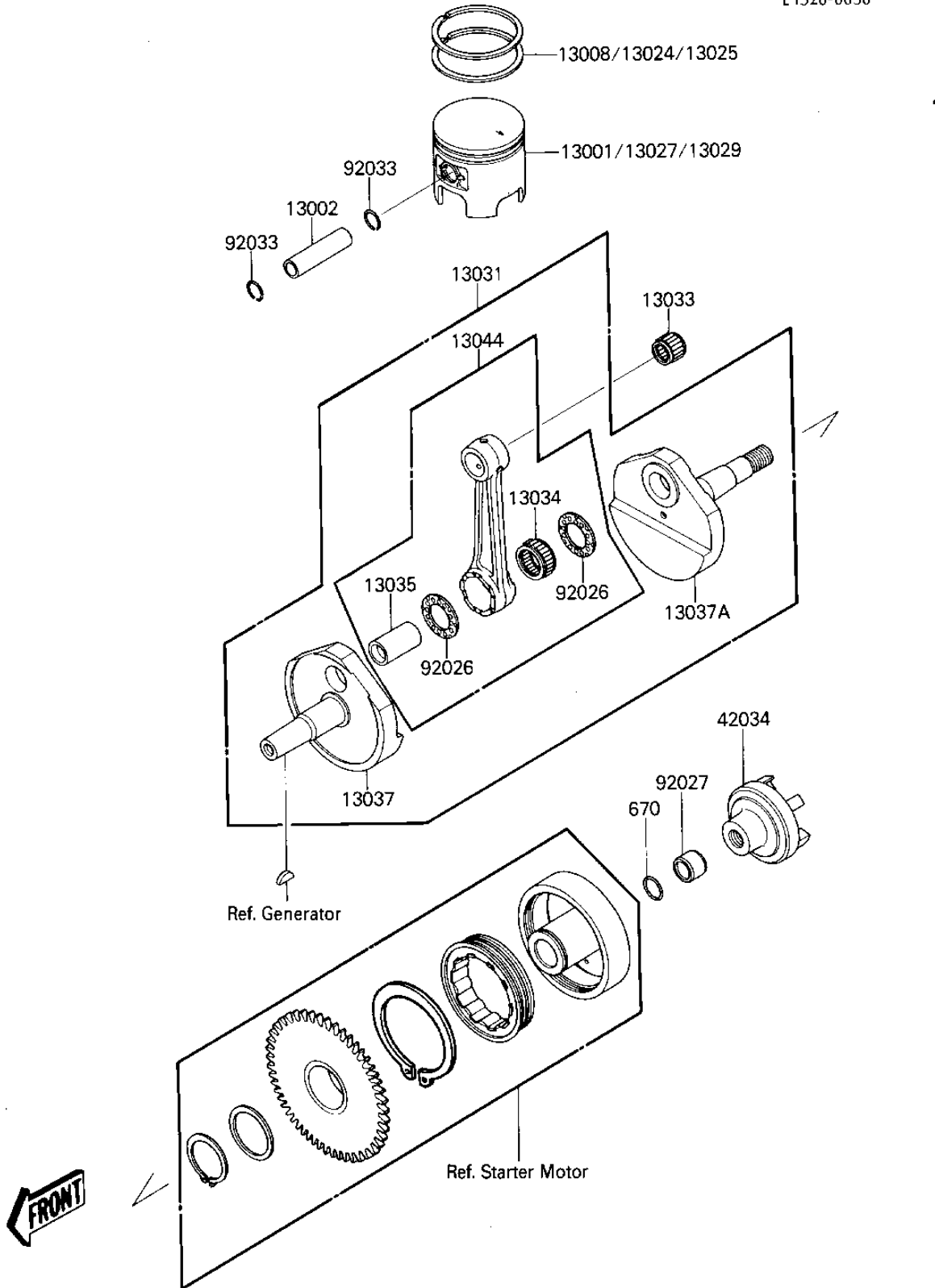


# 1987 JS300 PARTS DIAGRAM

## CRANKSHAFT/PISTON

E1320-0030



# 1987 JS300 PARTS LIST

## CRANKSHAFT/PISTON

ITEM NAME	PART NUMBER	QUANTITY
PISTON-ENGINE,STD (Ref # 13001)	13001-3705	1
PIN-PISTON (Ref # 13002)	13002-017	1
RING-SET-PISTON,STD (Ref # 13008)	13008-3701	1
RING-SET-PISTON LL,O/ (Ref # 13024)	13024-3701	1
RING-SET-PISTON L,O/S (Ref # 13025)	13025-3701	1
PISTON-ENGINE LL,O/S (Ref # 13027)	13027-3703	1
PISTON-ENGINE L,O/S 0 (Ref # 13029)	13029-3703	1
CRANKSHAFT-COMP (Ref # 13031)	13031-3703	1
BEARING-SMALL END (Ref # 13033)	13033-1010	1
BEARING,BIG END NEEDL (Ref # 13034)	13034-049	1
PIN-CRANK (Ref # 13035)	13035-3701	1
CRANKSHAFT,FR (Ref # 13037)	13037-3701	1
CRANKSHAFT,RR (Ref # 13037A)	13037-3706	1
SET-CONNECTING ROD (Ref # 13044)	13044-5055	1
COUPLING (Ref # 42034)	42034-3706	1
SPACER (Ref # 92026)	92026-3701	2
COLLAR,19X25X24 (Ref # 92027)	92027-3701	1
CIRCLIP-PISTON PIN (Ref # 92033)	92036-015	2
"O" RING,14MM (Ref # 670)	670B2014	1