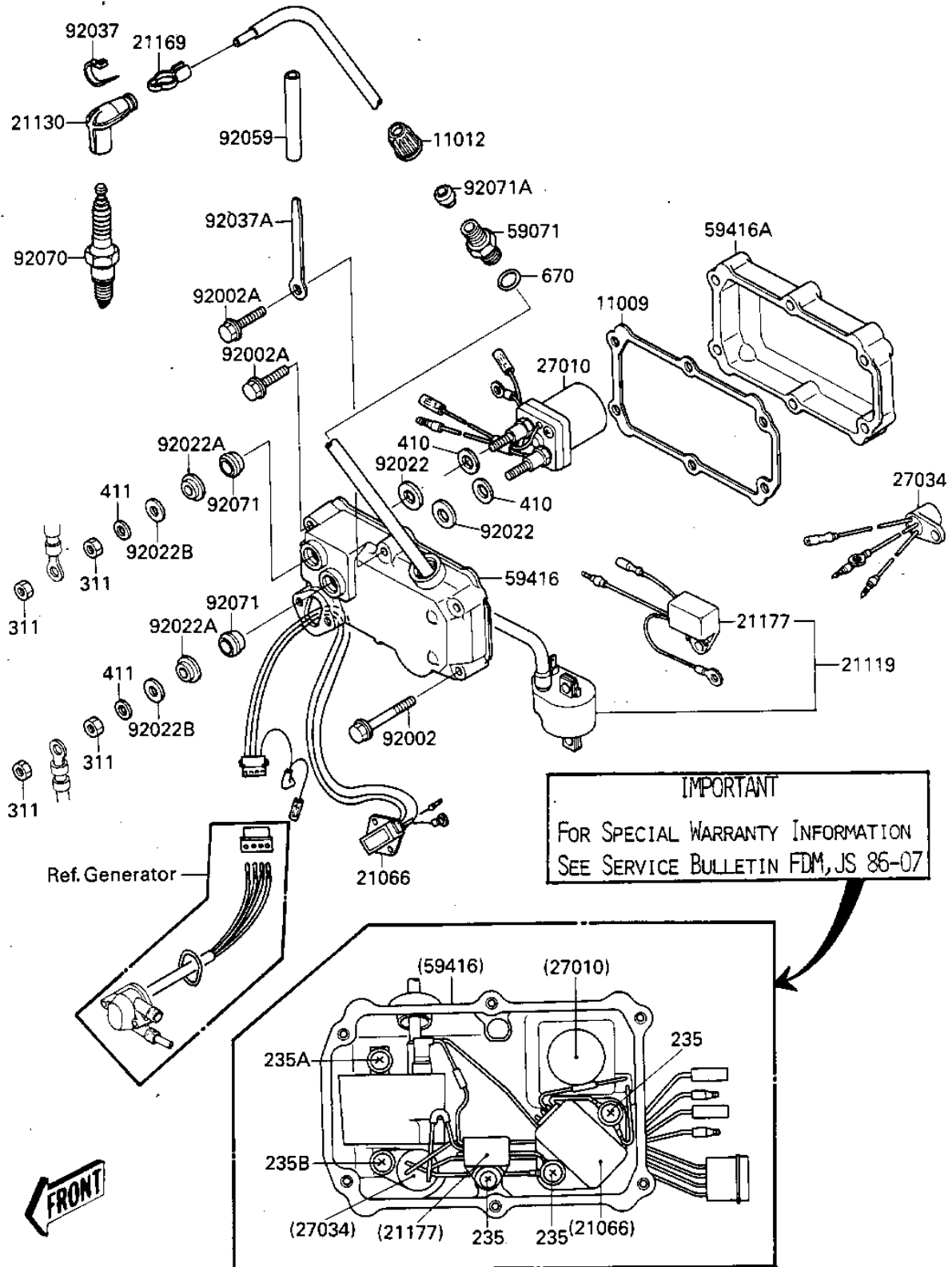


# 1986 JS300 PARTS DIAGRAM

## IGNITION/ELECTRIC CASE

E1830-0266



# 1986 JS300 PARTS LIST

## IGNITION/ELECTRIC CASE

ITEM NAME	PART NUMBER	QUANTITY
GASKET,ELECTRIC CASE (Ref # 11009)	11009-3711	1
CAP (Ref # 11012)	11012-3005	1
REGULATOR-VOLTAGE (Ref # 21066)	21066-3701	1
IGNITER (Ref # 21119)	21119-3707	1
CAP,SPARK PLUG (Ref # 21130)	21130-1006	1
TERMINAL,PLUG CAP (Ref # 21169)	21169-001	1
CONTROLLER (Ref # 21177)	21177-3701	1
SWITCH,STARTER RELAY (Ref # 27010)	27010-3703	1
RELAY (Ref # 27034)	27034-3002	1
JOINT (Ref # 59071)	59071-3001	1
CASE-ELECTRICAL,FR (Ref # 59416)	59416-3702	1
CASE-ELECTRICAL,RR (Ref # 59416A)	59416-3703	1
BOLT,6X35 (Ref # 92002)	92002-3715	2
BOLT,6X65 (Ref # 92002A)	92002-3720	4
WASHER,10.5X24X2.5 (Ref # 92022)	92022-3035	2
WASHER (Ref # 92022A)	92022-3708	2
WASHER,6.5X19X2 (Ref # 92022B)	92022-3709	2
CLAMP,SPARK PLUG CAP (Ref # 92037)	92037-1173	1
CLAMP,L=100 (Ref # 92037A)	92037-3736	1
TUBE,VINYL,5X73 (Ref # 92059)	92059-3017	1
SPARK PLUG B7ES (Ref # 92070)	92070-3003	1
GROMMET (Ref # 92071)	92071-3004	2
GROMMET (Ref # 92071A)	92071-527	1
SCREW-PAN-WP-CROS (Ref # 235)	235B0616	3
SCREW-PAN-WP-CROS (Ref # 235A)	235B0620	1
SCREW-PAN-WP-CROS (Ref # 235B)	235B0625	1
NUT,6M/M (Ref # 311)	311R0600	4
WASHER PLAIN 10MM (Ref # 410)	410B1000	2
WASHER (Ref # 411)	411S0600	2

# 1986 JS300 PARTS LIST

IGNITION/ELECTRIC CASE

ITEM NAME	PART NUMBER	QUANTITY
"0" RING,16MM (Ref # 670)	670B2016	1