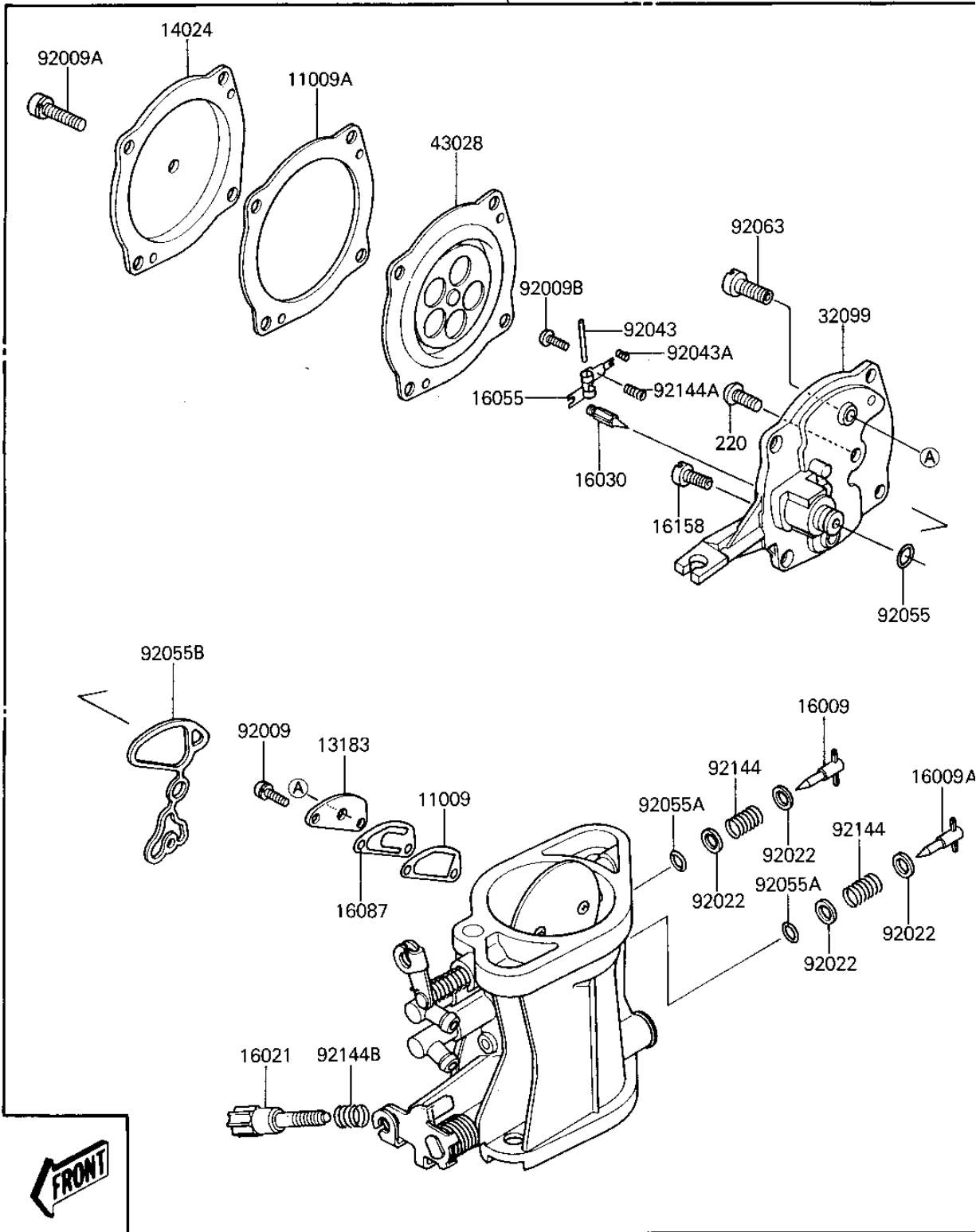


# 1987 X2 PARTS DIAGRAM

CARBURETOR

15001

E1611-0216



# 1987 X2 PARTS LIST

## CARBURETOR

ITEM NAME	PART NUMBER	QUANTITY
GASKET,CHOKE VALVE (Ref # 11009)	11009-3729	1
GASKET,DIAPHRAGM (Ref # 11009A)	11009-3730	1
PLATE (Ref # 13183)	13183-3707	1
COVER,CARBURETOR (Ref # 14024)	14024-3720	1
CARBURETOR-ASSY (Ref # 15001)	15001-3720	1
NEEDLE-JET,HIGH SPEED (Ref # 16009)	16009-3701	1
NEEDLE-JET,LOW SPEED (Ref # 16009A)	16009-3702	1
SCREW-THROTTLE STOP (Ref # 16021)	16021-3702	1
VALVE-FLOAT (Ref # 16030)	16030-3701	1
ARM-FLOAT (Ref # 16055)	16055-3701	1
VALVE-CHECK (Ref # 16087)	16087-3702	1
JET-SLOW,#48 (Ref # 16158)	16158-3701	1
CASE,CARBURETOR (Ref # 32099)	32099-3712	1
DIAPHRAGM,CARBURETOR (Ref # 43028)	43028-3704	1
SCREW-PAN-WS-CROS,3X6 (Ref # 92009)	223B0306	2
SCREW,4X16 (Ref # 92009A)	92009-3711	4
SCREW,3X6 (Ref # 92009B)	92009-3712	1
WASHER,ADJUST SCREW (Ref # 92022)	92022-3734	4
PIN,FLOAT (Ref # 92043)	92043-1209	1
PIN,THROTTLE STOP SCR (Ref # 92043A)	92043-3712	1
RING-O,FUEL FITTING (Ref # 92055)	92055-1223	1
RING-O,ADJUST SCREW (Ref # 92055A)	92055-3713	2
RING-O (Ref # 92055B)	92055-3714	1
MAIN JET,2ND,#125 (Ref # 92063)	92063-1069	1
SPRING,ADJUST SCREW (Ref # 92144)	92144-3704	2
SPRING,FLOAT VALVE (Ref # 92144A)	92144-3705	1
SPRING,THROTTLE STOP (Ref # 92144B)	92144-3706	1
SCREW-PAN-CROS (Ref # 220)	220D0408	1