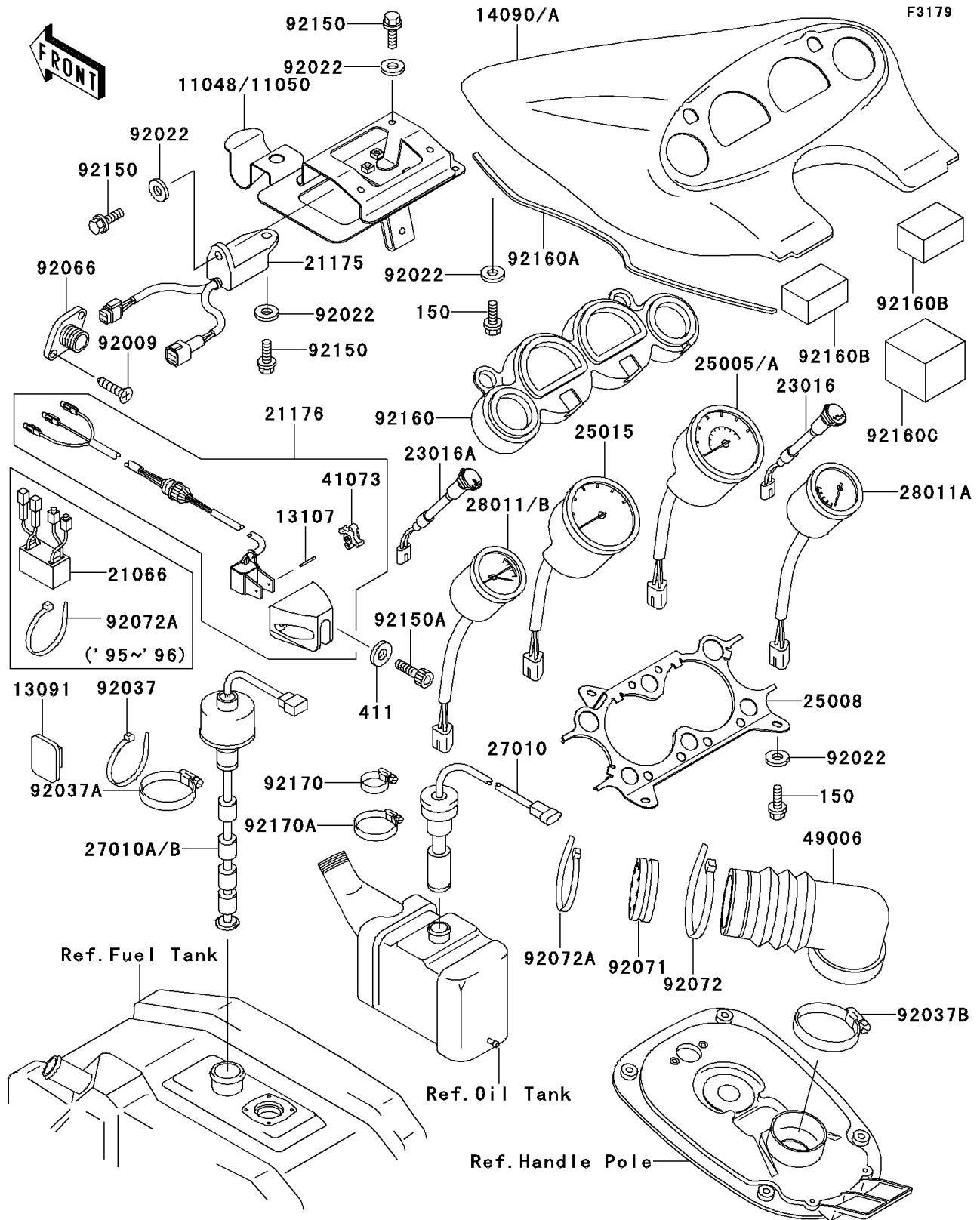


# 1996 900 ZXi PARTS DIAGRAM

Meters



# 1996 900 ZXi PARTS LIST

## Meters

ITEM NAME	PART NUMBER	QUANTITY
BOLT-WS,6X14 (Ref # 150)	150R0614	6
BRACKET,UNIT MOUNT (Ref # 11048)	11048-3766	1
HOLDER,BAND (Ref # 13091)	13091-3764	2
SHAFT,PADDLEWHEEL (Ref # 13107)	13107-3743	1
COVER,METER,J.S.VIOLET (Ref # 14090A)	14090-3749-23	1
REGULATOR-VOLTAGE (Ref # 21066)	21066-3713	1
CONTROL UNIT-ELECTRONIC (Ref # 21175)	21175-3701	1
SENSOR,SPEEDOMETER (Ref # 21176)	21176-3704	1
LAMP-ASSY,OIL LEVEL WARNING (Ref # 23016)	23016-3703	1
LAMP-ASSY,WATER TEMP WARNING (Ref # 23016A)	23016-3704	1
SPEEDOMETER,MPH (Ref # 25005)	25005-3701	1
BRACKET-METER (Ref # 25008)	25008-3705	1
TACHOMETER,X1000R/MIN (Ref # 25015)	25015-3702	1
SWITCH,OIL LEVEL (Ref # 27010)	27010-3740	1
SWITCH,FUEL LEVEL (Ref # 27010A)	27010-3741	1
METER,FUEL (Ref # 28011A)	28011-3708	1
METER,TRIM (Ref # 28011B)	28011-3716	1
WHEEL-ASSY,PADDLE (Ref # 41073)	41073-3701	1
BOOT,HARNESS (Ref # 49006)	49006-3715	1
SCREW,TAPPING,4X14 (Ref # 92009)	92009-3755	2
WASHER,6.5X20X1.5 (Ref # 92022)	92022-3710	11
CLAMP (Ref # 92037)	92037-1173	2
CLAMP (Ref # 92037A)	92037-3009	1
CLAMP (Ref # 92037B)	92037-3711	1
PLUG,SPEEDOMETER SENSER (Ref # 92066)	92066-3750	1
GROMMET,HARNESS (Ref # 92071)	92071-3803	1
BAND,L=292.1 (Ref # 92072)	92072-3509	1
BAND (Ref # 92072A)	92072-3778	3
BOLT,6X20 (Ref # 92150)	92150-3758	5

# 1996 900 ZXi PARTS LIST

## Meters

ITEM NAME	PART NUMBER	QUANTITY
BOLT,SOCKET,6X25 (Ref # 92150A)	92150-3823	2
DAMPER,METER (Ref # 92160)	92160-3834	1
DAMPER (Ref # 92160A)	92160-3843	2
DAMPER (Ref # 92160B)	92160-3859	2
DAMPER (Ref # 92160C)	92160-3862	1
CLAMP (Ref # 92170)	92170-3718	1
CLAMP (Ref # 92170A)	92170-3734	1
WASHER-PLAIN,6MM (Ref # 411)	411S0600	2